

# JAPAN HAKONE

Japan.  
Endless  
Discovery.

2025  
Winter/  
Spring

vol.18

FREE

English  
英語版

## HAKONE/ODAWARA/Mt.FUJI VISITOR'S GUIDE



Mt. Fuji and Lake Ashi

Detailed  
**MAP**  
Included

- Hakone's Various Rides
- Breathtaking Views of Mt. Fuji

- Area Maps & Main Spots
- Japanese Culture and Etiquette

Mい・Sほ-Mほ◎  
【ミスモ\*はこね】

Note : Pages with company names indicate promotional content.

# Hakone marquetry: A Proud Craft Tradition

Hakone Marquetry emerged from Hatajuku, Hakone, late in the Edo period (1603-1867). Hakone Maruyama Bussan is a shop specializing in Hakone Marquetry, located along the Hakone Hachiri Highway, near Lake Ashi. Here you'll find a wide array of original products, enjoy demonstrations by local artisans, and learn about the history of marquetry.



Demonstrations held every day!



Click here!



hakone saiku



**Hakone Maruyama Bussan**  
TEL. 0460-83-6604

17 Hakone, Hakone-machi, Ashigarashimo-gun, Kanagawa Pref.  
Hours: 10:00~17:00 (Closed at year-end and New Year's holidays, & irregular holidays) Get off at Hakone Sekisho-ato stop, 45 min. by bus from Hakone Yumoto Station.



**Hakone Karakuri Museum**  
TEL. 0460-83-7826

16 Hakone, Hakone-machi, Ashigarashimo-gun, Kanagawa Pref.  
Hours: 10:00~17:00  
(Closed at year-end and New Year's holidays, & irregular holidays)



# Contents



- 6 Getting to Hakone
- 7 Let's Enjoy Hakone's Various Rides!
- 10 Must See in Hakone
- 21 Recommended Courses to Enjoy Hakone
- 26 Breathtaking Views of Mt. Fuji
- 28 Gourmet Foods & Good Goods

## 【Area Attractions】

- 8 Wide Area
- 14 Odawara, Hakone-Yumoto
- 16 Miyanoshita, Kowakidani, Gora, Sengokuhara, Lake Ashi
- 30 Hakone / Odawara Map

## 【Culture and Etiquette】

- 22 Simple Japanese  
Pointers on Bathing Etiquette
- 23 Discover the Meaning & Source of Hakone Yosegi Zaiku?
- 25 Shrine and Temple Etiquette

Hakone, known for its natural beauty that changes expressions with the seasons, is full of charms -- hot springs, museums and art galleries, historical buildings, leisure facilities, fantastic food and glorious view of Mt. Fuji, the world's cultural heritage site.

Please visit Hakone that made tourists of the world a captive, and make lots of memories there.

Information published in this magazine is as of December, 2024. There may be cases of prices having been changed since then, due to consumption tax rate revision and other reasons, so please check with the stores before use. And there are instances of consumption tax or bathing tax, other service fees applied separately. The overnight stay prices are a single person charge on weekday (Monday to Thursday and Sunday, excluding the day before a holiday) overnight stay with two meals, for a room by two persons unless otherwise stated.

☒The details of what have been referred in this magazine could be changed or discontinued due to weather or other reasons. Please check with the organizer/facility/store before heading out.

Please note that the opening/business hours, charges, closed days, event opening periods and menu contents of facilities and stores published in this magazine are subject to change without notice.

Unauthorized reproduction/copying of photographs, illustrations, maps or articles in this magazine are strictly forbidden.



## Breathtaking vistas of the Hakone mountain range and the expanse of Sagami bay

Experience the tranquility, grace and serenity of Japanese traditional aesthetics while spending exceptional time in the land of Gora. At Hakone Gora KARAKU, guests will find a haven to indulge themselves in moments of true relaxation. Our priority lies in crafting unique experience tailored to each guest, ensuring that our hospitality is personalized and impressive for each visit. We welcome our guests with our hospitality that conveys the beauty of the four seasons, and with a space that allows guests to spend their time as they wish.

HAKONE GORA KARAKU

Tel. +81(0)460-83-8860 <https://www.gora-karaku.jp/>

1300-8 Gora Hakone-machi  
Ashigarashimo-gun Kanagawa Pref. Japan



KARAKU



## Relax and unwind on the shimmering banks of Lake Ashinoko

Hanaori is a sophisticated Japanese Spa resort where guests can unreservedly stop by for relaxation. The majestic nature and ambitious ripples of Lake Ashi whisper to your senses. Let the soothing warmth of the hot spring cradles you, creating a sense of peace. A design that gives beauty to every moment of your stay. Facilities that offer tranquility and relaxation. Buffet-style cuisine using the finest seasonal ingredients, blending the delicacy of Japanese cuisine with the elegance of Western cuisine to create a flavorful dining experience. In every aspect of the stay we provide services that bring joy and satisfaction.

HAKONE ASHINOKO HANAORI

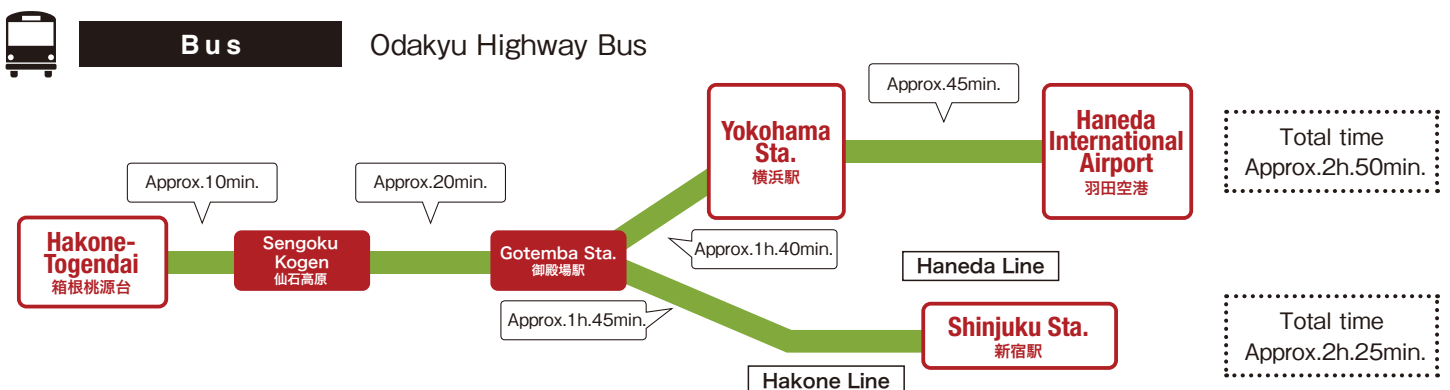
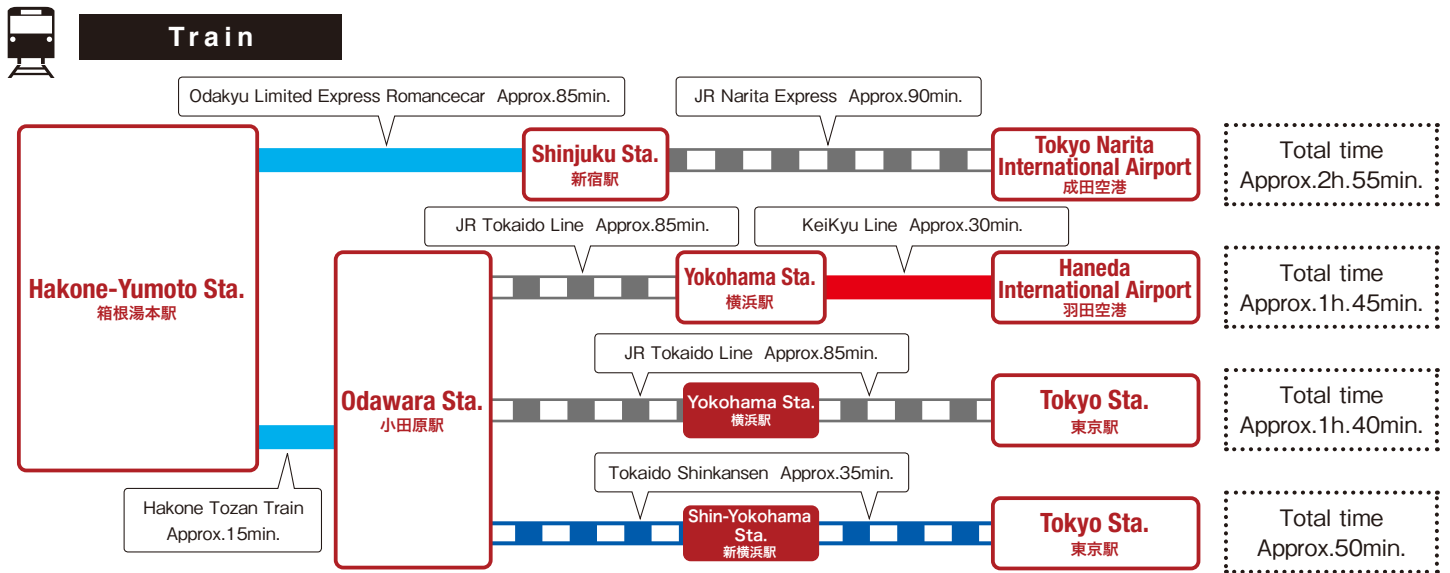
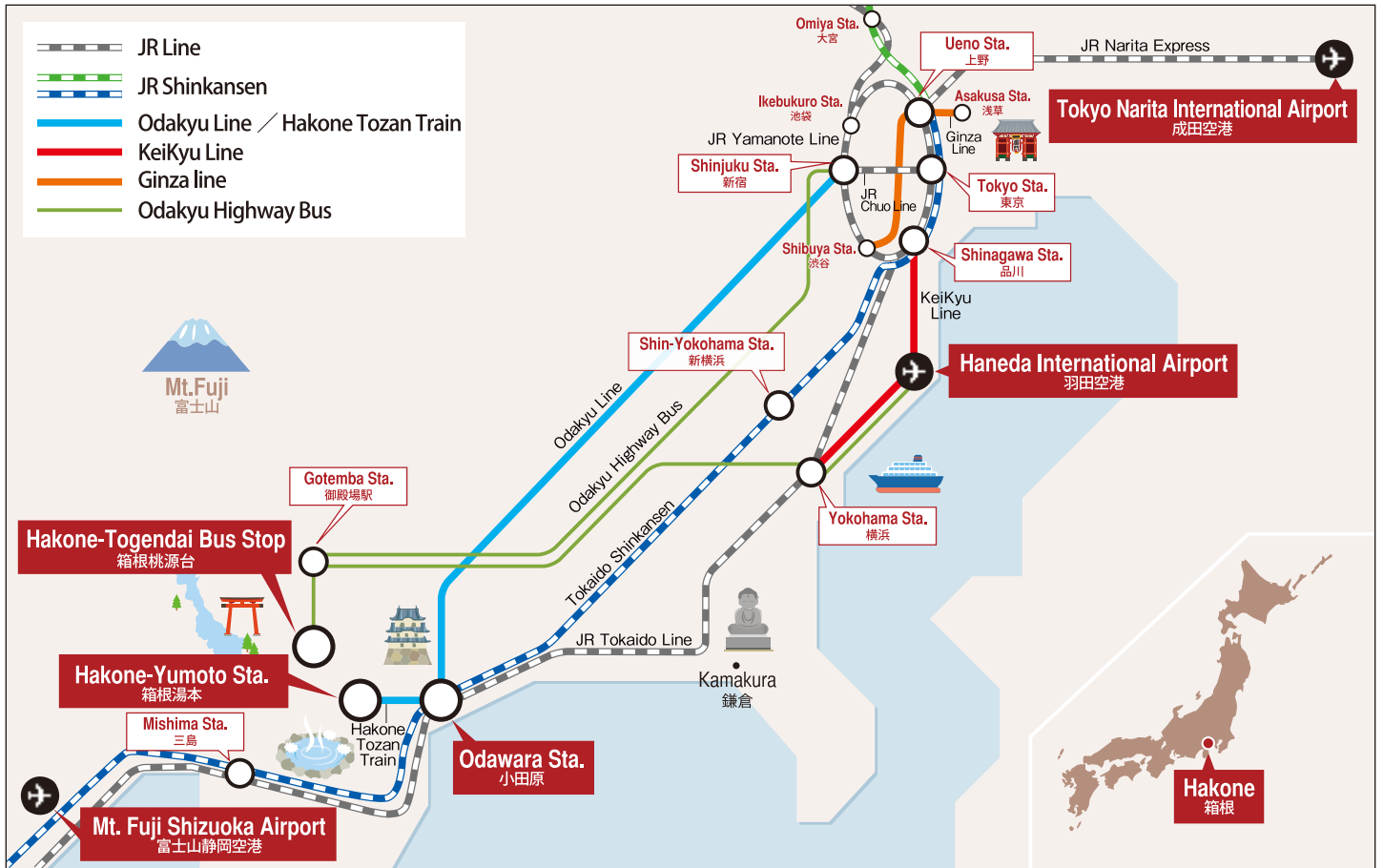
Tel. +81(0)460-83-8739 <https://hanaori.jp/ashinoko/>

160 Tougendai Motohakone Hakone-machi  
Ashigarashimo-gun Kanagawa Pref. Japan



HANAORI

# Getting to Hakone



\*It is an example. Estimated time is subject to change depending on operation and road condition.

# Let's Enjoy Hakone's Various Rides!

Whether cruising through the sky, crossing a lake, ascending or descending mountain trails on wheels or ropeway, Hakone boasts exciting ways to go and a chance to experience magnificent nature.



**Hakone Tozan Cable Car**  
Travels at approximately 1.2km to connect Gora and Sounzan stations in 10 minutes.

**Hakone Tozan Train**  
Travel from Odawara to Gora stations while enjoying surrounding wilderness and breathtaking views from railroad bridges.



● **Steepest pitch in Japan**

Between Hakone-Yumoto and Kowakidani stations is an 80/1000 gradient, the steepest in Japan for an adhesion railway.

● **Switchback**

The railcar climbs the steep incline in a switchback zig-zag, changing directions back and forth.



**Hakone Tozan Bus**  
Many buses operate, offering easy connections as it crisscrosses Hakone's fascinating mountain roads.

**Hakone Ropeway**  
Enjoy the views during a 30-minute ride across four kilometers between Sounzan and Togendai stations, including the amazing Owakudani volcanic valley, Lake Ashi, and magnificent Mt. Fuji.



**Hakone Sightseeing Cruise**  
operates between Hakone-machi, Moto-Hakone and Togendai on Lake Ashi. Enjoy the excellent hakone skyline and a panoramic view of Mt. Fuji.



**Odakyu Highway Bus**  
Offers direct transit from Shinjuku, Tokyo, Haneda Airport and Yokohama to Hakone and Gotemba.



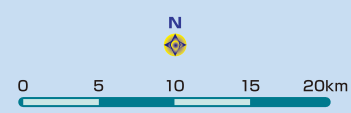
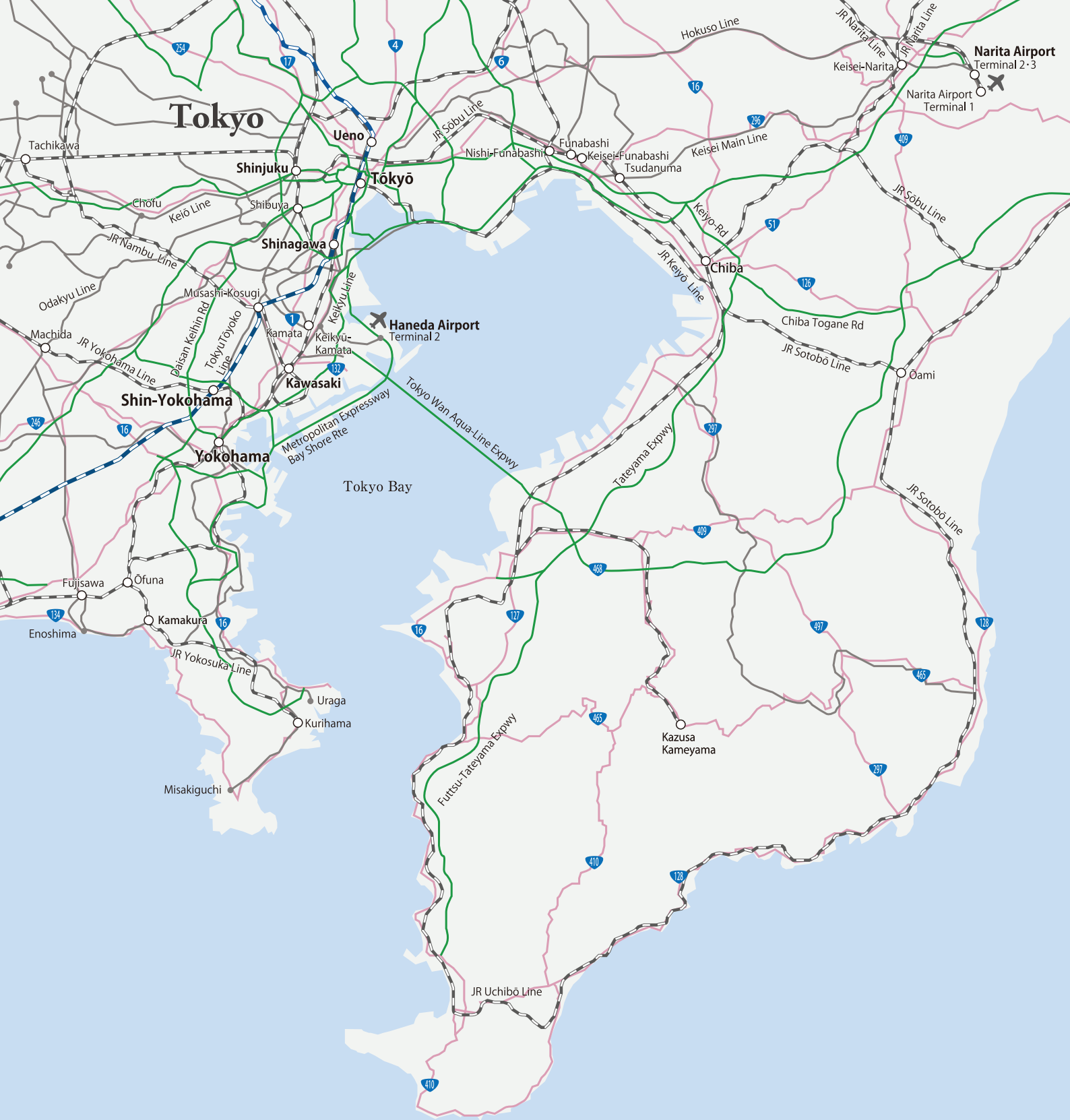
**"KANKO SHISETSU-MEGURI" Bus**  
(Tourist Attraction Sightseeing Bus/ Hakone Tozan Bus)  
This comfy way to go sports a fancy, retro-looking design as it circles tour locations like museums, with skylight windows for breathtaking views of sky and trees.

# Wide Area

広域







## Sengokuhara

仙石原



### Sengokuhara Pampas Grass Fields

仙石原スキ草原

Experience the sensual feel of pampas grass fields at the foot of Mt. Daigatake, renowned for showing Hakone autumn at its best. These golden fields, swaying as one in the fall breeze, are wonderful to see and touch.



### Owakudani 大涌谷

Created roughly 3 millennia ago by steam explosions, "Great Boiling Valley" is an active volcanic zone sourcing Hakone hot springs and a hot tourist spot for Mt. Fuji views. Feel the volcanic power amid natural beauty.



## Miyanoshita, Gora

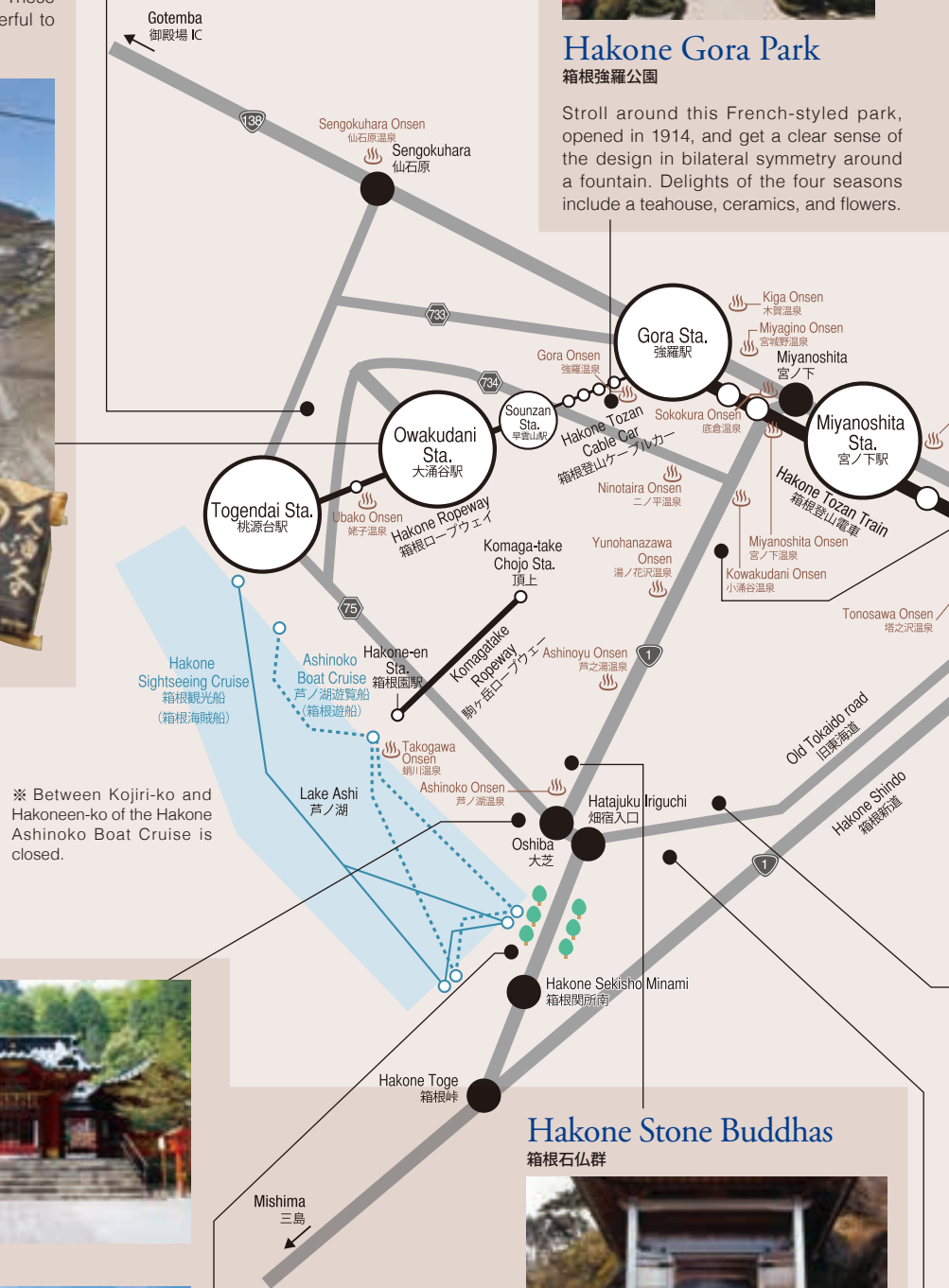
宮ノ下・強羅



### Hakone Gora Park

箱根強羅公園

Stroll around this French-styled park, opened in 1914, and get a clear sense of the design in bilateral symmetry around a fountain. Delights of the four seasons include a teahouse, ceramics, and flowers.



## Moto-Hakone, Hakone-Machi

元箱根・箱根町

### Hakone Shrine

箱根神社

Established amid the Nara period, this shrine was dedicated to all the local gods of Kanto and now is known for obtaining fortune, protection against evil, wish fulfillment, and safe road travel.



### Hakone Sekisho

(Check-point)

箱根関所

Feel the past come alive at this historic checkpoint for foot and vehicle traffic along the Tokaido Road, linking Edo (now Tokyo) and Kyoto in the Edo period. Inspection and tax collection were held in the Edo-style building.



### Hakone Stone Buddhas

箱根石仏群



Surrounding Shojin Pond is a stately gathering of Buddha sculptures and stone monuments going back 7 centuries. Among these sacred figures sits the contemplative Rokudo-jizo, carved out of rock and said to be Kanto's largest Buddha figure.

# See in Hakone



## Chisuji falls

千条の滝

Note how this waterfall, 3 meters high and 25 meters wide, flows quietly and hangs like a reed screen over moss-covered rocks in the upper reaches of Jakotsu River. Enjoy seasonal changes like summer's glowing fireflies and autumn's fiery leaves.



## Odawara Castle

小田原城

No trip to Odawara will be complete without visiting this castle built by Omori Yoriharu, regional lord of Nishi-sagami during the Muromachi period (1337-1573). The Hojo Clan, entombed at Sou-ji, succeeded him in ruling from this historic fortress, said to have been the largest in Japan during the Warring States period.



## Hotoku Ninomiya Shrine

報徳二宮神社

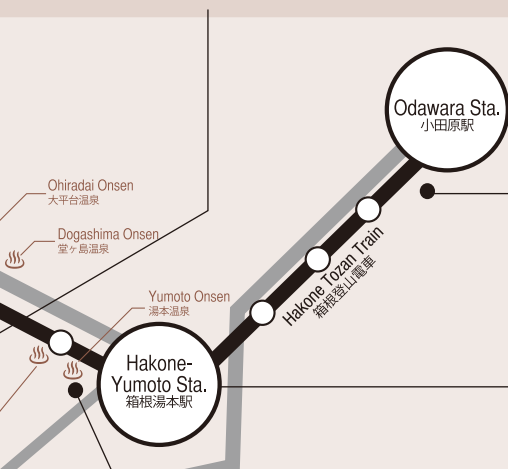
Established in 1894, next to Odawara Castle, the shrine has since been famous for the divine figure of Ninomiya Sontoku, well-known agriculturalist and philosopher.



## Odawara Fishing port

小田原漁港

In addition to offering soothing sounds of harbor waters, this port serves up a rich sea harvest including horse mackerel and sardine. And being seaside, naturally the harbor has plenty of places to dine on the freshest seafood, possibly lunching on a catch hauled from the ocean by fishermen at dawn.



## Hakone Old Tokaido Road

箱根旧街道

## Hakone-Yumoto

箱根湯本



## Amasake Chaya 甘酒茶屋



Historic teahouse open for business early in the Edo period sits perched on the Hakone stretch of the Tokaido Road, a portion legendary for being the most perilous on the old highway. Don't miss the tangy taste of sweet sake, yet another minor legend dating back to the start of the teahouse as well as naming it.



## Hakone-Yumoto 箱根湯本

Arguably the most vibrant and lively hot spring district in all Hakone, Yumoto will soon convince you of its superior features, like hot springs for day trips, firmly established inns offering traditional hospitality, and streets around the station chock-a-block with restaurants and souvenirs shops.



## Ishidatami

石畳

This stone-paved road was built at the beginning of the Edo period to make travel smooth and easy for royals as well as commoners. Present-day travelers can sense the passage of time as they look out on scenery as beautiful and captivating as it was for Edo pilgrims, priests, poets and others.



## Yumoto-Kenban 湯本見番

Though it may be hard to believe geisha are not born but made, the daily training here of Yumoto geisha includes dancing, singing, reciting poetry, gracefully pouring drinks without spilling a drop, and more. In addition, seasonal events are held to demonstrate their accomplishments.

Spring

Summer



Horaien



Camp & spa Yamanone

# \ Enjoy Nature Hakone Kowakien

Relax amid leisurely activities at Hakone various pleasures, and

All activities can be booked at Yunessun's information counter (1F) on the same day of an activity.



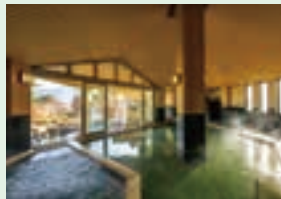
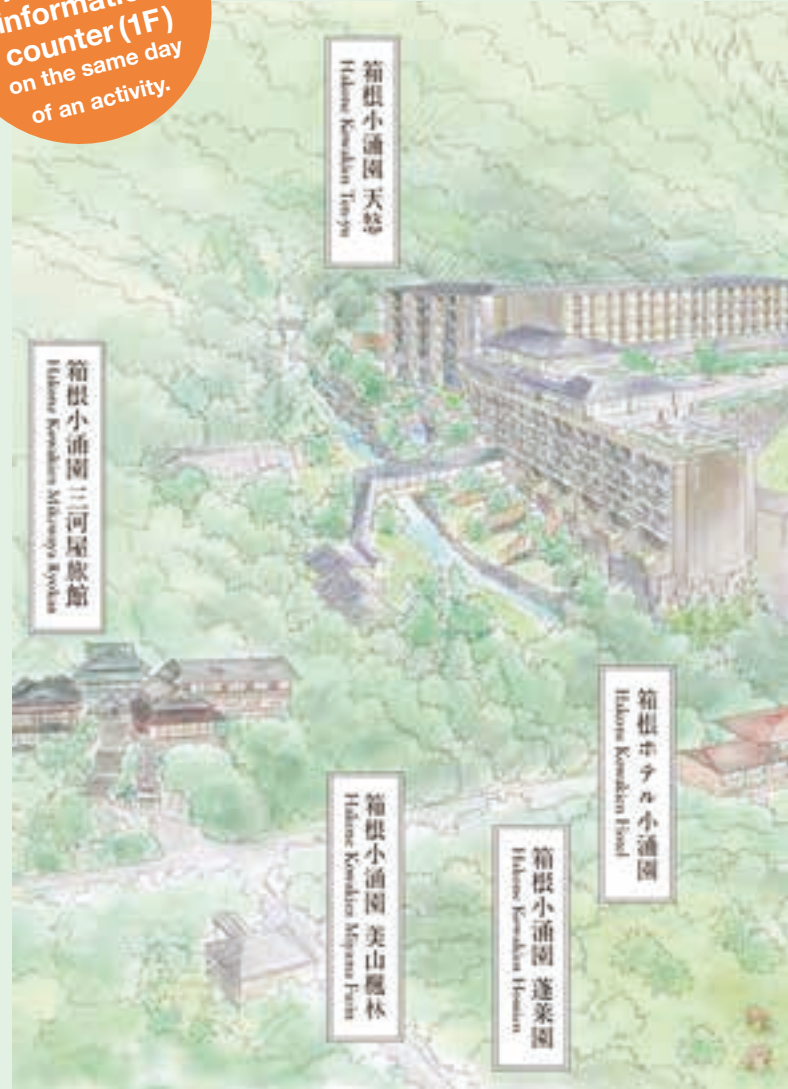
### Beginner Course

## Hike Chisuji Falls

A two-hour hiking course to Hakone Kowakien's nationally registered tangible cultural properties and Horaien Garden, as well as Chisuji Falls. Afterwards, enjoy *matcha* tea at Mikawayaya Ryokan.



Time: 10:00-12:00 Fee: ¥1,500 per person



### Yukata Rental and Historical Stroll

## Visit Three Shrines in Hakone Kowakien

### 1. Yukata rental

Rent a wearer-friendly two-piece *yukata* and stroll the grounds of Hakone Kowakien. Fine photo spots are introduced as well.

Fee: ¥2,000 per person



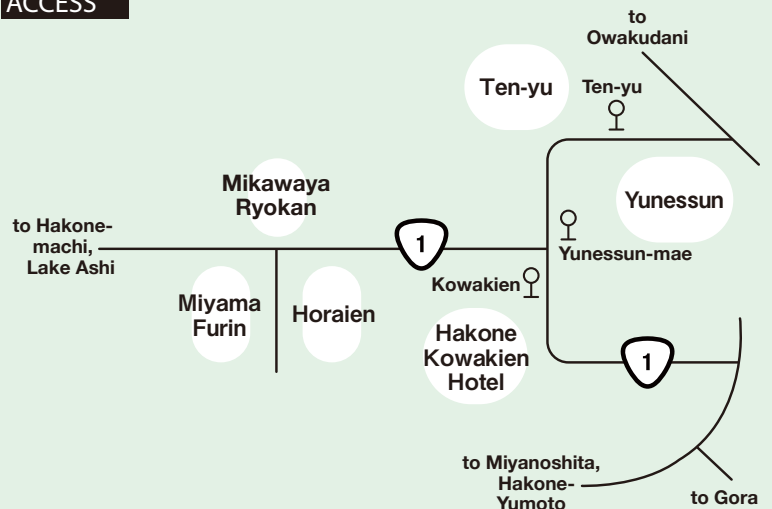
### 2. Yukata rental, dining, and hot springs

In addition to renting a two-piece *yukata* and strolling Hakone Kowakien, this fulfilling course lets you enjoy authentic soba noodles at Kihinkan and hot springs at Mori no Yu.

Fee: ¥5,500 per person



### ACCESS

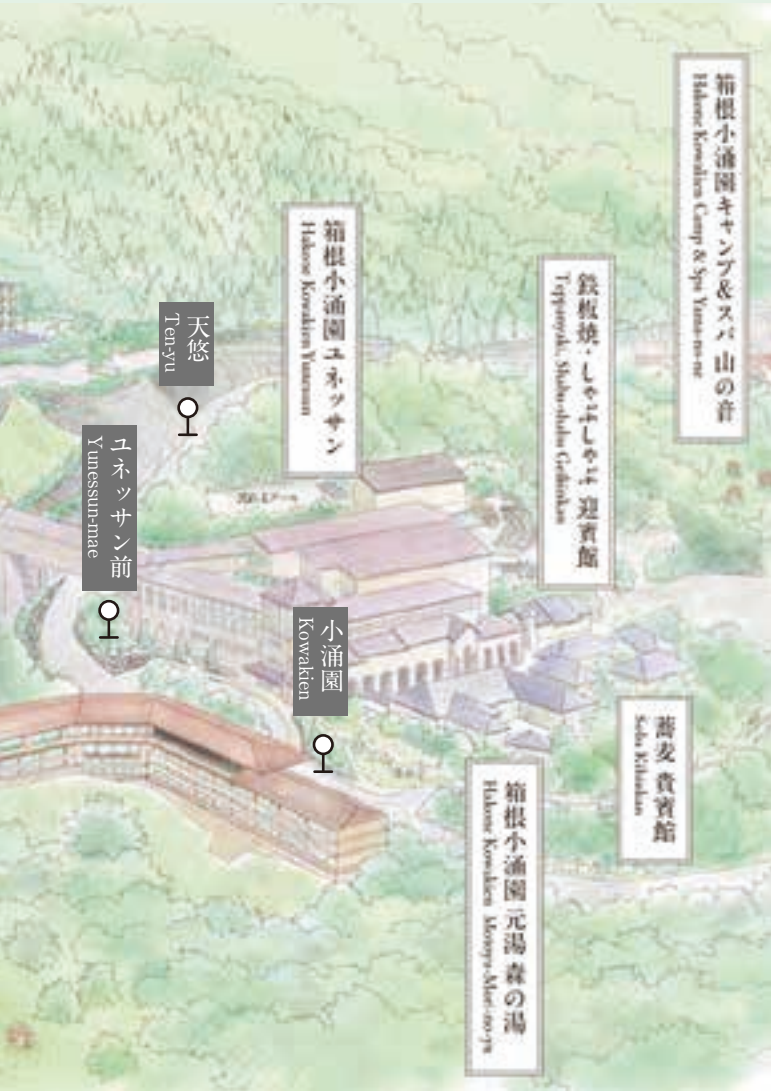


and Culture! /

# Activity Base

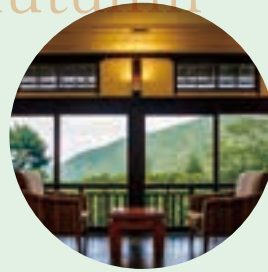
Kowakien, a resort where hot springs, dining, accommodation are all in one!

♀ = Bus stop



Autumn

Winter



Mikawayaya cafe



Mori no Yu



### Intermediate Course

## Trek Mt. Asama & Chisuji Falls

(Includes bathing at Mori no Yu)

A course of about 3.5 hours offers the pleasures of nature on a trekking course to Mt. Asama (802 m) and Chisuji Falls. Refresh yourself after the hike in Mori no Yu's inviting hot spring.

Time: 9:00-12:30 Fee: ¥3,000 per person



### Private Bath

## Motoyu Mori no Yu "Bettei Yasuragi"

A private hot spring like a hideaway surrounded by nature. Relax and unwind in your own private space.

Time: 11:00-20:00

Note: Advance reservation required

Fee: ¥7,000-¥11,000



### By train

About 90 min. from Shinjuku Station to Hakone-Yumoto Station by Odakyu Romancecar  
About 20 min. from Hakone-Yumoto Station by Hakone Tozan Bus or Izu Hakone Bus, or  
About 45 min. from Hakone-Yumoto Station to Gora Station by Hakone Tozan Train

### By car

(From Tokyo area)  
Tomei Expressway → Atsugi I.C. → Odawara Atsugi Road → Hakoneguchi I.C.  
→ National Route 1 → Hakone Kowakien (about 60 min. from Atsugi I.C.)  
(From Shizuoka/Gotemba area)  
Tomei Expressway → Gotemba I.C. → National Route 138 → Turn right at the  
Miyanoshiba flashing light → National Route 1 → Hakone Kowakien (about 40 min. from  
Gotemba I.C.)

Inquiries

Hakone Kowakien Activity Base  
Instagram DM  
@hakone\_kowakien\_activity



## Hakone Kowakien Digital MAP

Scan the QR code for information of each facility.



Note: All quoted fees include tax.



- 1 Mouth Melting Mont Blanc Soft is ¥1,200.
- 2 Gokuro-san (¥1,000, 8-piece pack), a jet-black *manju* sweet bun kneaded with bamboo charcoal is also highly recommended for its addictive sesame paste.
- 3 The foot bath with water flowing from the source will soothe your travel fatigue.



### Mont Blanc Sweets Savory for a Refreshing Foot Bath

Take a break from your stroll and relax by stopping by Fukuya Kuzuryumochi. Their Mouth Melting Mont Blanc Soft is a popular choice. It's soft-serve vanilla ice cream topped with Japanese chestnut cream made of chestnuts from local Ashigara and Kumamoto Prefecture. As you enjoy the Mont Blanc chestnut cream and soft-serve ice cream, a crispy meringue base comes forth, making it delicious again and again. Enjoy this savory sweet while relieving your fatigue in a foot bath in front of the store.

**Fukuya Kuzuryumochi**  
福久や 九頭龍餅

☎ 0460-85-8818 MAP P14-B

- 729 Yumoto, Hakone-machi, Ashigarashimo-gun, Kanagawa
- 9:00-17:00 ▪ Open daily
- 3-minute walk from Hakone-Yumoto Station (Hakone Tozan Train)





1



2



3

- ❶ Special *tenju* set (a box of tempura served over steamed rice) of limited availability is for ¥3,630. For your dining pleasure, there is also a boat-shaped sashimi platter.
- ❷ The second-floor tatami room has a distinct tranquil atmosphere.
- ❸ Spacious dining room with a high ceiling offers relaxed meals.

# Savor Locally Sourced Japanese Cuisine in a Stately Building

Founded 128 years ago, this stately Japanese restaurant has a magnificent front entrance, decorated with carvings of a phoenix and other figures, exuding the air of a long-established restaurant. In the second-floor tatami room, with attractively designed fittings, you'll enjoy *kaiseki* cuisine in a private room with a calm atmosphere. Fresh seafood is sourced from Odawara Fishing Port, and our skilled chefs prepare it into sushi, tempura, and sashimi. Enjoy Japanese cuisine to your heart's content in a traditional building designated a nationally registered tangible cultural property. Please contact us for consultations on dietary restrictions.



## Daruma Ryoriten

国指定登録有形文化財 のれんと味 だるま料理店

☎ 0465-22-4128 MAP -P14-A

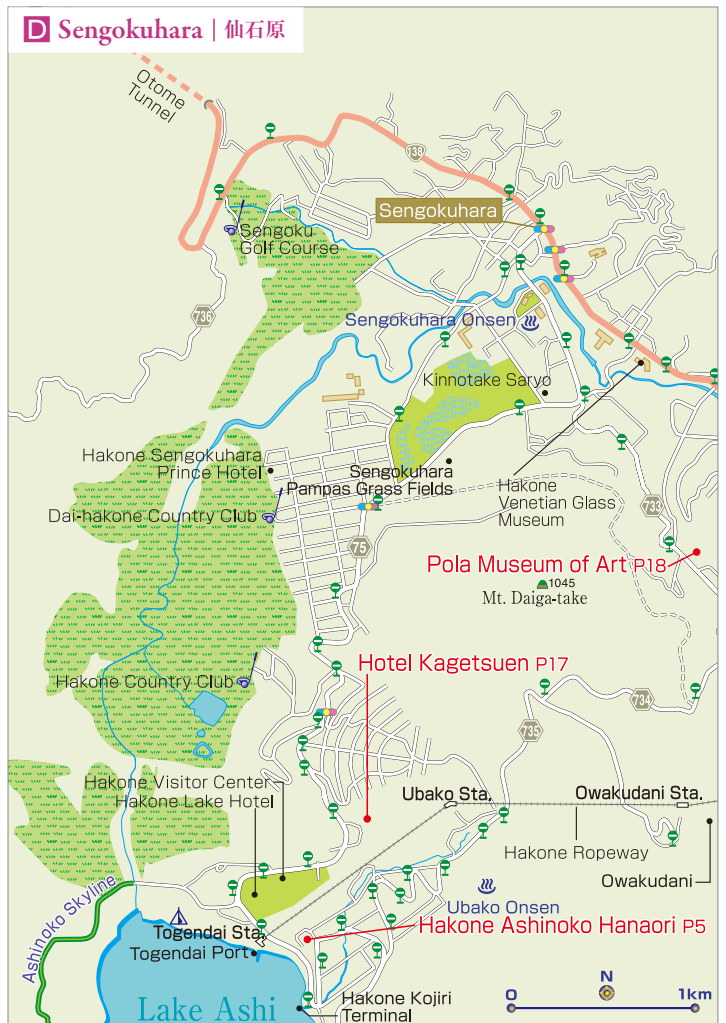
- 2-1-30 Honcho, Odawara-shi, Kanagawa
- 11:00-20:00 (last order)
- Open daily ▪ Parking available
- 8-minute walk from Odawara Station (JR, Odakyu)



Choice wood was used for the *karahafu irimoya-zukuri* building (Chinese-styled gable eaves and hipped roof), bestowing all with the dignity of history.

4

# Miyanoshita / Kowakidani / Gora / Sengokuhara / Lake Ashi



**Hakone Tourist Information Center**

Obtain here the latest information of the whole Hakone area, such as sample trip plans and the best spots of the season. English-speaking staffers are available to help plan your trip around Hakone.

---

Hakone Tourist Information Center  
 Open hours 9:00~17:45 (open every day)  
 TEL 0460-85-5700 MAP P14-B

\*Between Kojiri-ko and Hakoneen-ko of the Hakone Yusen is closed.



- ❶ The museum's classic Japanese garden, a Registered Monument of Japan, has one of the country's finest and most diverse moss gardens.
- ❷ Savor *matcha* tea with seasonal sweets in a garden-viewing teahouse.
- ❸ Mysteriously shaped rocks and azaleas of Sekiraku-en Garden.



## Japanese Aesthetics and Beauty Amid the Savory Four Seasons

Aesthetic pleasures await you in Hakone's oldest art museum. Stroll a Japanese garden after viewing *tsubo* jars from the Kamakura and Muromachi periods (12th-14th centuries) and pottery from the Momoyama period (16th-17th centuries). Or relax from a seated garden view in a teahouse serving *matcha* tea with seasonal sweets. Bring this issue and enjoy entry-fee discounts for adults (¥110) and for students (¥50).



### Hakone Museum of Art 箱根美術館

☎ 0460-82-2623  P16-C

- 1300 Gora, Hakone-machi, Ashigarashimo-gun, Kanagawa
- Apr.–Nov.: 9:30-16:30 / Dec.–Mar.: 9:30-16:00 (last admission 30 mins. before closing)
- Closed Thur. (open if a holiday / Nov.: open daily)
- Entry fees: adults, ¥1430; high school and university students, ¥660; junior high school students and younger, free
- A minute's walk from Koenkami Station (Hakone Tozan Cable Car)



- ❶ 2 days/1 night with meals from ¥13,350 per person. Day trip including bathing fees (11:00-15:00): Adults ¥1,000, Children ¥700
- ❷ From the deluxe suite you can have a superb view of the Hakone mountain range to yourself.
- ❸ In spring, the garden azaleas look magnificent.



## Inn Featuring a Superb View of Mt. Fuji and Two Types of Hot Springs

Our guest rooms have large windows: on the garden side, they look out over Mt. Fuji and the Hakone mountain range; on the mountain side, they look out over vibrant green trees. We have two types of hot springs: simple and sulfur. In addition to a large bathhouse for our simple hot spring, there are four sulfur-spring baths that you can reserve without charge. For dinner, try our Japanese-and-Western dinner tray to savor both cuisines.



### Hotel Kagetsuen ホテル花月園

☎ 0460-84-8621  P16-D

- 1244-2 Sengokuhara, Hakone-machi, Ashigarashimo-gun, Kanagawa
- 40 minutes by bus from Hakone-Yumoto Station (Hakone Tozan Train)



# Harmony of Sculpture and Nature



Opened in 1969, the Hakone Open-Air Museum is the first open-air museum in Japan. Located in the mountains of Hakone, it spreads over 70,000 square meters and offers beautiful views of the surrounding mountains. Surrounded by nature, this art museum is perfect for taking a leisurely stroll while appreciating art.



## THE HAKONE OPEN-AIR MUSEUM

彫刻の森美術館 0460-82-1161 [MAP P16-C](#)

\* 1121 Ninotaira, Hakone-machi, Ashigarashimo-gun, Kanagawa \* 9:00-17:00 (Last admission: 16:30) \* 365 days/year \* adults ¥2,000 ; university and high school students ¥1,600 ; middle and elementary school students ¥800 \* Hakone Tozan Train to Chokoku-no-Mori Station, from which it is a 2-minute walk to the museum



# Resonance in an Artful Forest



Set in the woods of Hakone, this art museum presents special exhibitions selected from a collection comprising a wide range of works, including those by Impressionists like Monet and Renoir, as well as by Picasso and Fujita, plus Japanese paintings and contemporary art. There is also a kilometer-long promenade to enjoy strolling through the enchanting, rich nature of the National Park.

## POLA MUSEUM OF ART ポ ー ラ 美 術 館

0460-84-2111 [MAP P16-D](#)

■ 1285 Kozukayama, Sengokuhara, Hakone-machi, Ashigarashimo-gun, Kanagawa ■ 9:00-17:00 (no admission after 16:30) ■ Open daily (closed occasionally for display/exhibition change) ■ Entry fees: adults, ¥2,200; university/high school students, ¥1,700; junior high school students and younger, free ■ 13-minute bus ride from Gora Station (Hakone Tozan Train)



花壇 74歳  
GÔRA KADAN



“A most exclusive Japanese retreat”



A stay in Gôra Kadan, the former retreat of the Imperial Family, Kanin-no-miya, situated in the heart of Hakone National Park, is an invitation to bring your five senses to life by immersing yourself in the ancient Japanese way of life.

The rooms have been designed in a minimalist style, and the hotel's facilities include a swimming pool, stonebath, hammam a spa, and a beauty salon.



ALL AROUND THE WORLD. UNIQUE IN THE WORLD Our 500 restaurants & hotels offer the finest experiences all over the world.

Hotel

 **GÔRA KADAN**

2 guests occupancy 63,000JPY~  
Room charge half board (dinner & breakfast) per person, per night.  
All prices including taxes / service charge.

Tel. +81 (0) 460-82-3331

✉ reservation@gorakadan.com

Restaurant

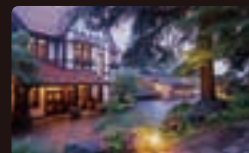
**Kaiseki KADAN** 懐石料理 花壇

located inside the luxurious inn GÔRA KADAN

Restaurant of the Kaiseki cuisine

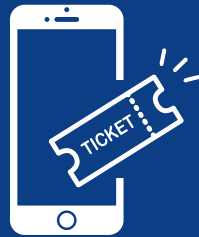
Tel. +81 (0) 460-82-3333

✉ kadan@gorakadan.com





# Hakone Freepass



Hakone Freepass gives you unlimited rides on 8 transportation networks and discounts at affiliated facilities in the Hakone area with just one ticket!



Fares	2 Days		3 Days	
	Adults	Children	Adults	Children
From Shinjuku	6,100 yen	1,100 yen	6,500 yen	1,350 yen

**Buy online**



Travel faster and easier with your smartphone

# Recommended Courses

*to Enjoy Hakone*

## 1 Rides and HISTORY Course

**Hakone-Yumoto Sta.**  
 Hakone Tozan Train

**Gora Sta.**  
 Hakone Tozan Cable Car

**Koen-shimo Sta.**  
 Walk

**Hakone Gora Park**  
 **Hakone Gora Park**

**Koen-kami Sta.**  
 Walk

**Koen-kami Sta.**  
 Hakone Tozan Cable Car

**Sounzan Sta.**  
 Hakone Ropeway

**Owakudani Sta.**  
 Hakone Ropeway

**Togendai Sta./Port**  
 Hakone Sightseeing Cruise

**Hakone-machi Port**  
 Walk

**Hakone Sekisho**  
 **Hakone Sekisho**

**Moto-Hakone Port**  
 Walk

**Hakone Ashinoko Narukawa Art Museum**  
 Walk

**Moto-Hakone Port**  
 Hakone Tozan Bus

**Hakone Ashinoko Narukawa Art Museum**  
 **Hakone Ashinoko Narukawa Art Museum**

**Hakone-Yumoto Sta.**

**Cedar Avenue**  


## 2 NATURE Course

**Hakone-Yumoto Sta.**  
 Hakone Tozan Train

**Hakone Tozan Train**  


**Kowakidani Sta.**  
 Walk

**Kowaki-en**  
 Hakone Tozan Bus

**Hakone Kowaki-en Horaien**  


**Hakone Venetian Glass Museum**  


**Hakone Venetian Glass Museum**

**Gora Sta.**  
 "KANKO SHISETSU-MEGURI" Bus

**Hakone Yuryo**  
 Hakone Tozan Train

**Hakone Yuryo Hot spring (onsen)**  


**Hakone-Yumoto Sta.**

## Point 1

# Simple Japanese

If you can learn some simple Japanese, it will be useful when trying to communicate.

### Greeting and Daily Conversation

Yes / No	hai / iie はい いいえ
Good Morning	ohayo (gozaimasu) おはよう(ございます)
Hello	konnichiwa こんにちは
Good evening	konbanwa こんばんは
Good-bye	sayonara さようなら
Thank you	arigato (gozaimasu) ありがとう(ございます)
Excuse me	sumimasen すみません
I'm sorry	gomennasai ごめんなさい
It's delicious	oishi おいしい

### Shopping and Eating

How much is it?	ikura desu ka? いくらですか?
What do you recommend?	Osusume wa nani desu ka? おすすめは何ですか?
What is this?	Kore wa nani desu ka? これは何ですか?
Do you have ○○?	○○ wa arimasu ka? ○○はありますか?
I'll have this, please.	Kore o kudasai これをください
Can I pay using my creditcard?	Kurejitto Kādo de shiharai dekimasu ka? カードで支払いできますか?

### Sightseeing

Where is the ○○?	○○ wa doko desu ka? ○○はどこですか?
I want to go to ○○.	○○ ni ikitai desu ○○に行きたいです

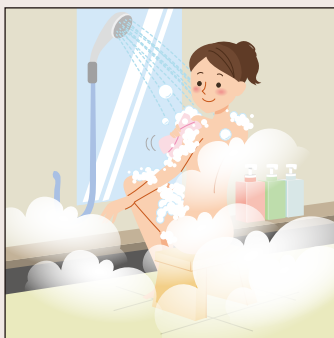
How long will it take?	Jikan wa dore gurai kakarimasu ka? 時間はどれぐらいかかりますか?
Could you please take my/our picture.	Shashin o totte kudasai 写真を撮ってください
Can you speak English?	Eigo wa hanasemasu ka? 英語は話せますか?
I lost my ○○.	○○ o nakushimashita ○○を失くしました

Toilet	toire トイレ	Tourist office	kanko annaijo 観光案内所
Station	eki 駅	Hospital	byouin 病院
Bus Stop	basunoriba バス乗り場		

## Point 2

# Pointers on Bathing Etiquette

These are places to relax and heal your mind and body, so enjoy your time calmly and refrain from any public pool-type antics.



### 1 Wash before entering the bath!

Wash face and body, then rinse off all soap before entering the tub. Enter naked, without wearing a towel, and enjoy soaking—only soaking.



### 2 No towels in the tub

Enter the bath slowly, to avoid splashing. As a matter of public hygiene, don't put or let your towel into the water and, in general, follow common-sense manners as well as these etiquette pointers.



### 3 Dry off after bath and before entering dressing room

Dry off with a towel in the bathing area, before entering the dressing room, to prevent the dressing room floor getting wet.

### Onsen FAQs

- Onsen water can be quite dense and the heat intense, so avoid getting dizzy by limiting your time: don't soak too long (no more than 15 minutes). Immerse yourself up to neck or waist, no deeper, and be sure to hydrate before and after a bath.
- Bath water may have some "floaties" that are natural mineral components, not trash or filthy bits, so don't worry if something tiny comes your way.

# Discover the Meaning & Source of Hakone Yosegi Zaiku?

Hakone Yosegi Zaiku was born in Hatajuku, a post town in Hakone where travelers passed through late in the Edo period (1603–1867). It is said to have started when people took particular note of the wide variety of trees in the Hakone mountains and made trays and boxes by combining

various woods with different colors and grains. The technique has been passed down to the present day, and in Japan the marquetry is made only in Hakone Town and Odawara City in Kanagawa Prefecture.



## 1 Skilled artisanal technique

*Taneita* (original or source plates) are made by combining various types of wood to create patterns. There are two techniques: (1) *zuku-bari*, in which the plates are thinly shaved to 0.15-0.2 mm thickness and applied to the outside of wooden products, such as small boxes; and (2) *muku-zukuri*, in which the original plates themselves are carved out and processed. Many years of experience and skill are required for cutting the wood at precise angles, measuring the dimensions accurately, and adeptly doing the adhesion stage.



## 2 The natural colors of wood

Since the mountains of Hakone became a national park, various types of wood from Japan and abroad have been used. The colors derive from each type of wood, and no additional coloring is done at all. Since the grain and texture of each wood variety differ, there happily are no identical products.

## 3 Traditional patterns born from various woods

With some basic 60 traditional patterns used in Hakone marquetry, there are known to be as many as 100–200 different arrays by changing color and arrangement. By varying the type of combined woods and the affixed angle of cut materials, an appealing multitude of patterns is created.



Hexagonal hemp leaf



Waves



Tortoise shell



Manji-tsunagi (key fret pattern)

Let's try!

### What's the Trick in a Trick Box?



TRICK BOXES

Trick boxes incorporate a puzzle element that can be opened by moving the sides of the box in a set order. Simple ones can be opened by moving the trick mechanism four times, while complex ones can be opened by moving them as many as 72 times. They have existed since the Edo period and are said to have been used to hide valuables from thieves. Trick boxes, which combine practicality with a sense of fun, are popular among the many souvenirs that make your visit a memorable one.

# Enjoy Mt. Fuji and Japanese Culture Around Lake Ashi

Why not journey to Lake Ashi in Hakone, an area of rich nature embracing this vast lake and Mt. Fuji, and absorb history as well? Be sure to stop where you can immerse yourself in Japanese culture, like traditional teahouses or souvenir shops where you can try sake tasting.



Onshi-Hakone Park



Hakone Checkpoint



Hakone Shrine, Torii Gate of Peace



## Lake Ashi Area MAP



### Obansho Chaya

A teahouse set in a wondrous location, where you can have fine sweets while looking out at Lake Ashi and Mt. Fuji.



### Hakone Sekisho Tabimonogatari-kan

The largest souvenir shop in the Lake Ashi area is designed with an Edo-period (1603-1867) look and feel. In this vivacious atmosphere, enjoy shopping among a wide array of souvenirs, including Hakone specialties and folk crafts. There also are two restaurants, one specializing in tasty soba noodle dishes.



Hakone Pirate Ship



## Fine Sake-Tasting Experience



“Kiki-zake” means tasting sake with all five senses to affirm quality. At the sake-tasting corner in Tabimonogatari-kan, you’ll sample small amounts of 30 kinds of sake carefully selected from all over Japan. English descriptions are available. After the tasting, purchase the sake you found delightfully savory.



Hakoneyama



Kamotsuru

Setsugekka



Pour cold sake into this mysterious cup and watch it change color to cherry blossoms and Mt. Fuji!

## Brilliant Souvenirs from Hakone



For your shopping and dining pleasure, feast your eyes and palate on a host of brilliant products from Hakone no Oyama—a melt-in-your-mouth Hakone specialty sweet made of sweet potato paste wrapped in red bean paste—to miscellaneous goods and renowned Hakone marquetry.

### Hakone Sekisho Tabimonogatari-kan

10 Hakone, Hakone-machi, Ashigarashimo-gun, Kanagawa Prefecture

Hours: 9:00–17:00

Open daily (Note: May be closed temporarily)



### Point 3

## Shrine and Temple Etiquette

Shrines are dedicated to Shinto gods, and temples to Buddhist figures such as bodhisattvas and various incarnations of Gautama. In both of these sacred places you should move and act calmly and speak quietly.

### 1 Bow slightly before entering a shrine's *torii* or a temple gate

The ground and space beyond a shrine's *torii* or a temple gate are considered sacred. Bow slightly before passing through *torii* or temple gate. As the center of the shrine walkway is the path of a sacred being, visitors should walk slightly to the right or left.



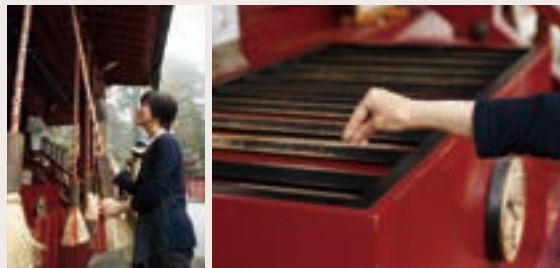
### 2 Rinse hands and mouth at the *chozuya* (ritual ablution pavilion)

After passing through shrine or temple entry, you'll find a small pavilion for rinsing hands and/or mouth before you step up to the sacred space occupied by shrine god or Buddhist deity.

Perform the ablution in five simple steps: ① with your right hand, dip the ladle into water and rinse your left hand; ② switch hands and rinse your right hand; ③ take the ladle with your right hand and pour some water into your left palm, and raise that cupped water to your mouth and rinse (taking care that your mouth does not directly contact any part of the ladle); ④ pour water onto your left hand to cleanse it; ⑤ raise the ladle cup straight up, perpendicular to the ground, to let the remaining water pour down the handle and clean it, and then return the ladle to its original spot on the fountain, face down.

### 3 Offering Ritual: Ring bell and toss money into offering chest

These days coins or bills are used as an offering to deities. In the past, these were made in the form of rice. There is no set amount to offer, so you should decide how much to give according to your wish or prayer, purification ritual, gratitude, or other matter. Temples usually don't have a rope pull, but if there is one, do as in a shrine; if none, make your silent pronouncement and toss gently into the slatted grate atop the offering chest.



### 4 Shrine Salutation: Bow twice, clap twice, and bow once to greet the deity

Bow deeply before a shrine's outer sanctuary and then make two bows, each at a 90-degree angle. Raise hands to chest center, Western-prayer style, and clap twice at a shrine but not a temple. Return hands to chest center and pray. Lower hands to sides and bow once, at a 90-degree angle. Bow again, deeply, and step back.

### 5 Shrine and Temple Option: amulet or paper votive

After making an offering, many visitors stop by a building where votives and amulets are sold. They also often draw paper fortunes. An amulet is worn to receive the deity's blessing; a paper votive is read to learn one's fortune. You also have the choice, according to custom, to tie the paper votive on a branch of a tree—on temple or shrine grounds—or you can take it home.



#### Distinguishing points of a temple

- Temples usually do not have *torii* but a formal structure of wood, often two stories high, as their gate. Bow slightly before passing through the overhead structure.
- When making offerings or praying at a temple, do not clap the hands. Bow deeply and then bring hands together, chest center (Western-prayer style), as you make your pronouncement.

(with thanks to Hakone Shrine)

# Breathtaking Views of Mt. Fuji

Mt. Fuji, symbolic home to Japanese people, became a World Cultural Heritage site by virtue of its beauty and being a source of spiritual as well as artistic inspiration. Experience all the joys of uniquely viewing Japan's sacred peak from Hakone and its environs.



1  
from Onshi-Hakone Park



2  
from Mt. Taikan



3  
from Moto-Hakone Port



4

from Owakudani



5

from Mt. Komagatake



6

from Jukkoku Toge



Mt. Fuji is also featured on the MiSMO Hakone net. Find out more here!



MiSMO Hakone net



## Owakudani Black Eggs

大涌谷黒たまご

Black eggs, a local specialty, owe their unique look and taste to boiling in hot spring ponds (80°C) and then steaming at 100°C. Watch for yourself as shells turn black when immersed in hot spring minerals. Eat one, legend says, and you'll be blessed by Jizo Bosatsu (bodhisattva assuring longevity and healthy child-rearing) and your life extended by seven years.



## Yuba & Tofu

湯葉&豆腐

Tofu comes from coagulating soy milk (pressed from beans) with bittern into small blocks, and *yuba* from skimming off the top layer of heated soymilk. Hakone tofu and yuba, made with delicious local water, are known for "sweet" flavor and aroma.



# Hakone

# Gourmet Foods



## Soba (buckwheat noodles)

そば

This traditional Japanese food goes back some 300 years and is made from ground buckwheat grain seeds. The deciding factor is water when making the noodles, which then offer a rich aroma and enjoyable texture. Good-quality water gushes in Hakone, so the taste of soba made here is specially delicious and popular.

## Umeboshi (pickled plums)

梅干し

Japanese plums or *ume* are pickled in salt and dried in sunlight. The resulting *umeboshi* have been used as highly portable food by itinerant travelers passing through Hakone since the reign of the Odawara Hojo Clan and were highly valued in the Edo period by samurai accompanying *daimyo*. Unique Odawara varieties include *shisomaki umeboshi* (pickled ume wrapped in perilla leaf).



## Kamaboko (fish cake)

かまぼこ

These fish cakes made from kneading then steaming minced white fish are known for their characteristic elastic texture and rich flavor. Transportation was inconvenient in the Edo period, so Odawara *kamaboko*—as preserved food made from fish caught fresh here—was served at local inns in Hakone. News of its delicious flavor soon spread nationwide.





## Odawara Chochin

(Odawara lantern)

小田原ちょうちん

These paper lanterns are made by attaching paper to a frame of thin bamboo sticks and are lit by a candle within. Odawara *chochin*, said to have been created during the Edo period for travelers crossing the Hakone mountains, can be neatly folded and put away. What's more, they're resistant to rain and fog. Being partially made from sacred trees, they were also used as a talisman against evil.



## Yosegi-Zaiku

(marquetry goods)

寄木細工

Hakone Yosegi-Zaiku come from combining various kinds of wood to create geometric shapes utilizing wood hues and grains. These are then planed down and affixed to small boxes and other items. This craft dates back to the late Edo period and a wide range of goods, including boxes and coasters, are still made today as traditional Hakone craftwork.



## Onsen Manju

(hot spring steamed bun)

温泉まんじゅう

This famous hot spring steamed bun is named for hot spring water used in the dough and for being steamed in hot spring vapors. They're sold not only in boxes to take home as gifts but also sold individually in stores, so be sure to try a freshly steamed bun when you visit.

What to choose from the fine assortment of Hakone gourmet foods and traditional goods? A difficult decision, but don't miss out on black eggs (unique to hot springs), tasty buckwheat noodles, elegant marquetry, and so much more!

# & Odawara & Good Goods



## Seafood Cuisine

海鮮料理

Hakone and Odawara, located between Sagami Bay and Suruga Bay, provide an abundant harvest of seafood, which means there's a wide variety of fresh fish, including sushi. Odawara has its own fishable harbor, so you can enjoy fresh catches of the day.

## Wakasagi (pond smelt)

わかさぎ

A freshwater fish of Lake Ashi, *wakasagi* is a local specialty chosen for the Top 100 Local Specialties in Kanagawa. It's been used in local cuisine throughout the ages, and now you can try a variety of dishes like deep-fried or sweet boiled fish at restaurants near the lake.



**Staff**

**Publisher**

Nakamura Kazuhiro  
中村 和広

**Editor in Chief**

Maki Yoshiko  
牧 淑子

**Sales&Promotion Staff**

Yonenaga Yoko  
米永 洋子  
Sonooka Shinobu  
園岡 忍

**Editor**

Makino Sachi  
牧野 祥  
Yamaguchi Keiko  
山口 敬子  
Watabe Natsumi  
渡部 夏海

**Designer**

Ushiro Nana  
後 奈那  
Ono Chieko  
小野千恵子  
Ito Shingo  
伊藤 慎悟  
Bravo Graphics  
ブラボーグラフィックス  
studio GIVE  
スタジオ ギブ

**Map Design**

Kobayashi Shigeko  
小林 重子

**DTP Staff**

Shirasawa Junna  
白澤 淳奈

**Special Thanks**

McDAVIS ASSOCIATES,INC.  
マック・デビスアソシエーツ

**Cooperation 協力**

Odakyu Electric Railway Co., Ltd.  
小田急電鉄株式会社

Odakyu Hakone Group  
小田急箱根グループ

HAKONE TOWN  
箱根町

HAKONE Convention Bureau  
箱根コンベンションビューロー

Hakone Town Tourist Association  
一般財団法人箱根町観光協会

Odawara City  
小田原市

**Issue 発行**

iNCLUBE Co., Ltd.  
株式会社インクルーブ

<https://mismo-hakone.jp>

本誌の広告に関するお問い合わせは  
株式会社インクルーブ

〒215-0017  
神奈川県川崎市麻生区王禅寺西3-12-10 佐熊ビル3F  
営業企画部 ☎044-959-3750

**Printing and bookbinding 印刷・製本**

SANKI SOGO PRINTING Corporation  
サンケイ総合印刷株式会社

次号は2025年7月発行予定です。





Minamiashigara-shi

Kanagawa Pref.

Odawara-shi

Hakone-machi

Yugawara-machi

Manazuru-machi

Atami-shi

- A** Odawara 小田原
- B** Hakone-Yumoto 箱根湯本
- C** Miyanoshita / Kowakidani / Gora  
宮ノ下・小涌谷・強羅
- D** Sengokuhara 仙石原
- E** Ashinoko (Lake Ashi) 芦ノ湖

# Hakone/ Odawara

箱根・小田原



## Guestrooms of Ancient Atmosphere

Built in 1936, Hana Goten ("FLOWER PALACE") has come to symbolize Fujiya Hotel, thanks to its eye-catching, elegant Japanese design and a red balcony with high railings. This distinct design enables Hana Goten to also serve as a symbol of Hakone.



FLOWER PALACE



## Thriving Traditions & Prestige

# CLASSIC HOTEL

Experience a rare time as only found here. Relax and refresh amid the enchanting seasonal scenery and the symbiotic harmony of the building that incorporates Japanese and Western architectural designs and has been designated a tangible cultural property of Japan.



KIKKA-SO



## Fine Seasonal Japanese Cuisine in a Historic Building

Travel back in time to 1895, when KIKKA-SO was built as the Imperial Miyanoshita Villa. Here, in this historic venue, you'll savor distinctly prepared Japanese cuisine that makes the most of the natural flavors of seasonal ingredients.



# FUJIYA HOTEL

0460-82-2211

359 Miyanoshita, Hakone-machi, Ashigarashimo-gun, Kanagawa

MAP P16-C

HP ▶



Instagram ▶

