

JAPAN HAKONE

Japan.
Endless
Discovery.

2019
Winter/
Spring

vol.9

FREE

English
英語版

HAKONE / ODAWARA / Mt. FUJI VISITOR'S GUIDE

Detailed
MAP
Included

箱根

Mt. Fuji and Lake Ashi



- Breathtaking Views of Mt. Fuji
- Hakone's Various Rides
- Experience Hakone

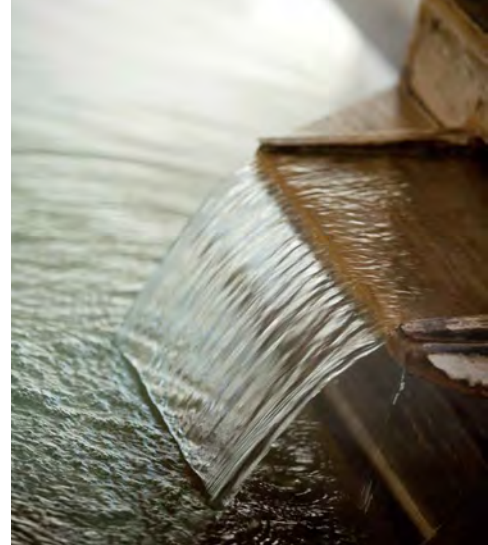
Japanese Culture and Etiquette

Miss Moo
【ミスモ*はこね】



Contents

- 5 Getting to Hakone
- 6 Breathtaking Views of Mt. Fuji
- 8 Let's Enjoy Hakone's Various Rides!
- 10 Recommended Courses to Enjoy Hakone
- 11 Transportation HAKONE KAMAKURA PASS, Tickets information
- 12 Must See in Hakone
- 20 Experience Hakone



Hakone, known for its natural beauty that changes expressions with the seasons, is full of charms – hot springs, museums and art galleries, historical buildings, leisure facilities, fantastic food and glorious view of Mt. Fuji, the world's cultural heritage site.

Please visit Hakone that made tourists of the world a captive, and make lots of memories there.



Rooms



Activities



Dining

Area Attractions

- 14 Odawara
- 18 Hakone-Yumoto
- 21 Miyanoshita, Kowakidani, Gora
- 26 Sengokuhara, Lake Ashi
- 30 Hakone / Odawara Map

Culture and Etiquette

- 4 Simple Japanese
- 15 Japanese Customs for Rooms and Meals
- 17 Shrine and Temple Etiquette
- 23 Pointers on Bathing Etiquette
- 25 History of Hakones, Odawara

Information published in this magazine is as of October, 2018. There may be cases of prices having been changed since then, so please check with the stores before use. And there are instances of consumption tax or bathing tax, other service fees applied separately. The overnight stay prices are a single person charge on weekday (Monday to Thursday and Sunday, excluding the day before a holiday) overnight stay with two meals, for a room by two persons unless otherwise stated. ※ The details of what have been referred in this magazine could be changed or discontinued due to weather or other reasons. Please check with the organizer/facility/store before heading out.

Please note that the opening/business hours, charges, closed days, event opening periods and menu contents of facilities and stores published in this magazine are subject to change without notice.

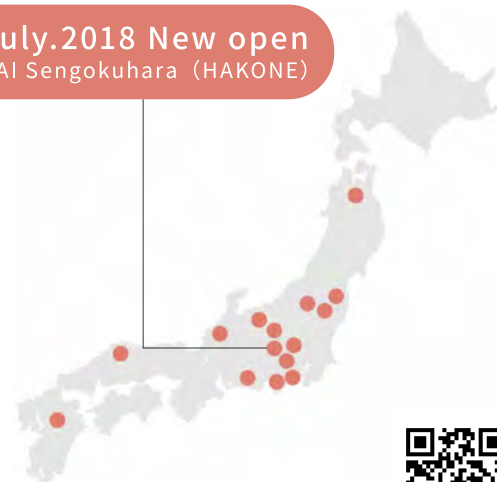
Unauthorized reproduction/copying of photographs, illustrations, maps or articles in this magazine are strictly forbidden.

Japan's hidden luxuries—at your fingertips

KAI is a leading brand of luxury boutique hot spring ryokans. Every establishment offers a contemporary take on the traditional Japanese inn, providing unique, location-specific experiences—from exclusive activities to specialty suites—designed to immerse guests in the lavish world of Japanese regional craftsmanship.

- Free Wi-fi
- English-speaking staff
- Outdoor bath

July.2018 New open
KAI Sengokuhara (HAKONE)



<https://kai-ryokan.jp/en>



Comfortable Access to Hakone

<p>Shinjuku Expressway Bus Terminal → Hakone-Togendai 140min. ¥2,010</p> <p>Tokyo Sta. → Hakone-Togendai 135min. ¥2,160</p>	<p>Haneda International Airport → Hakone-Togendai 160min. ¥2,260</p> <p>Haneda International Airport → Hakone-Yumoto Sta. 140min. ¥1,950</p>
---	--

Hakone-En

Odakyu Hotel de Yama

Hakone-Togendai (Lake Ashi)

Sengoku Area

Gotemba Sta.

Hakone-Yumoto Sta.

Shinjuku Expressway Bus Terminal

Tokyo Sta.

Yokohama Sta.

Haneda International Airport

*1 Five roundtrips per day between Haneda Airport and Hakone-Togendai Station

Odakyu Hakone Highway Bus
03-3427-3160 Japanese Only (10:00~18:00)
<https://www.odakyu-hakonehighway.co.jp/>

Reservation and Purchase for Haneda / Yokohama Departure Keikyu Kosoku Bus Reservations Service
<http://www.kousokubus.com/>



**A feast for all your senses.
Make the most of being away.**

Pristine mountain forests. World-famous hot springs and cuisine. Relax and savor this rare pairing of luxurious comfort with classic Japanese style and hospitality.

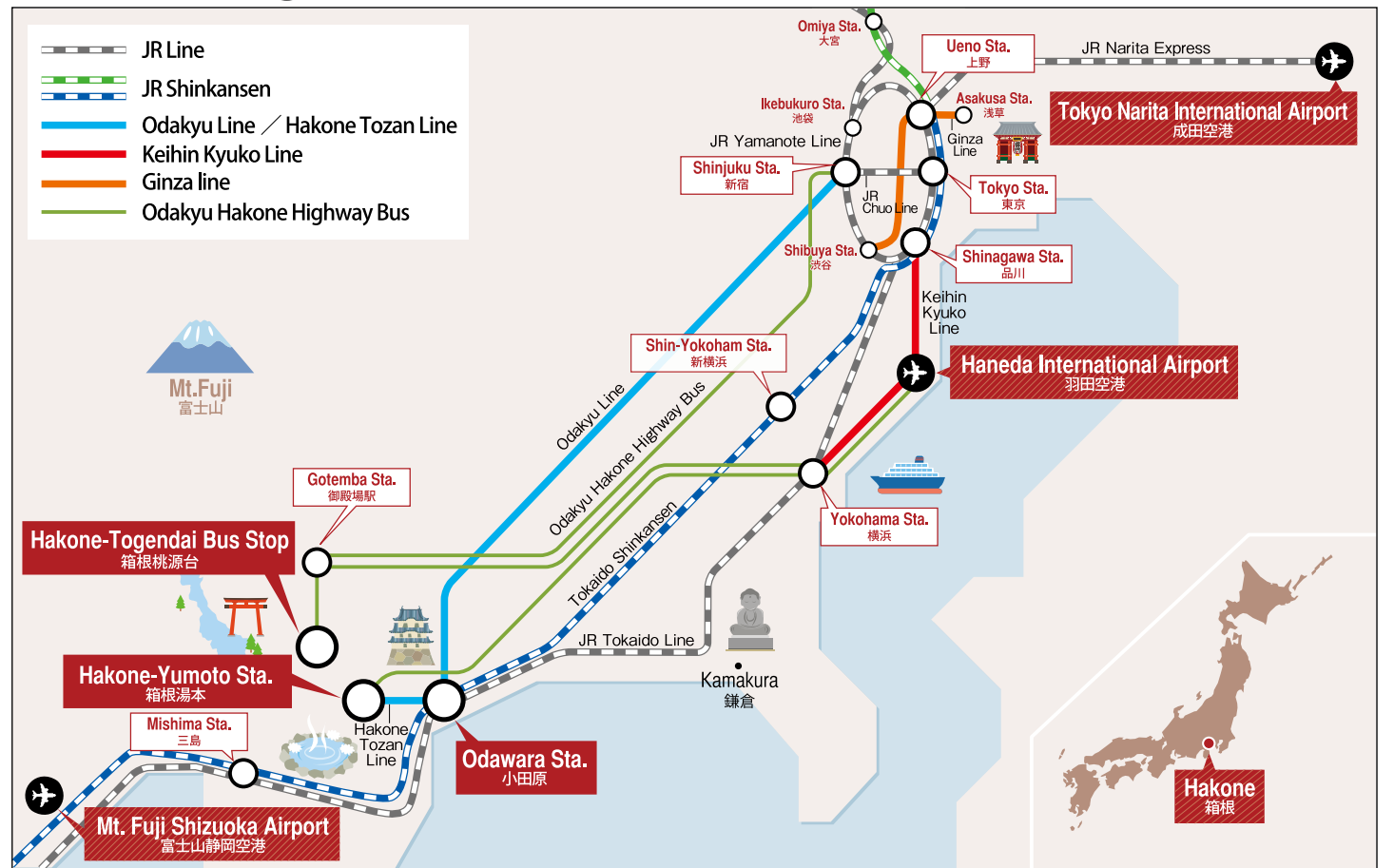
Tel. 0460-82-2000
hakone.regency.hyatt.com

**HYATT REGENCY HAKONE
RESORT AND SPA**
1320 Gora, Hakone-Machi
Ashigarashimogun, Kanagawa 250-0408



HYATT name, design and related marks are trademarks of Hyatt Corporation.
©2017 Hyatt Corporation. All rights reserved.

Getting to Hakone

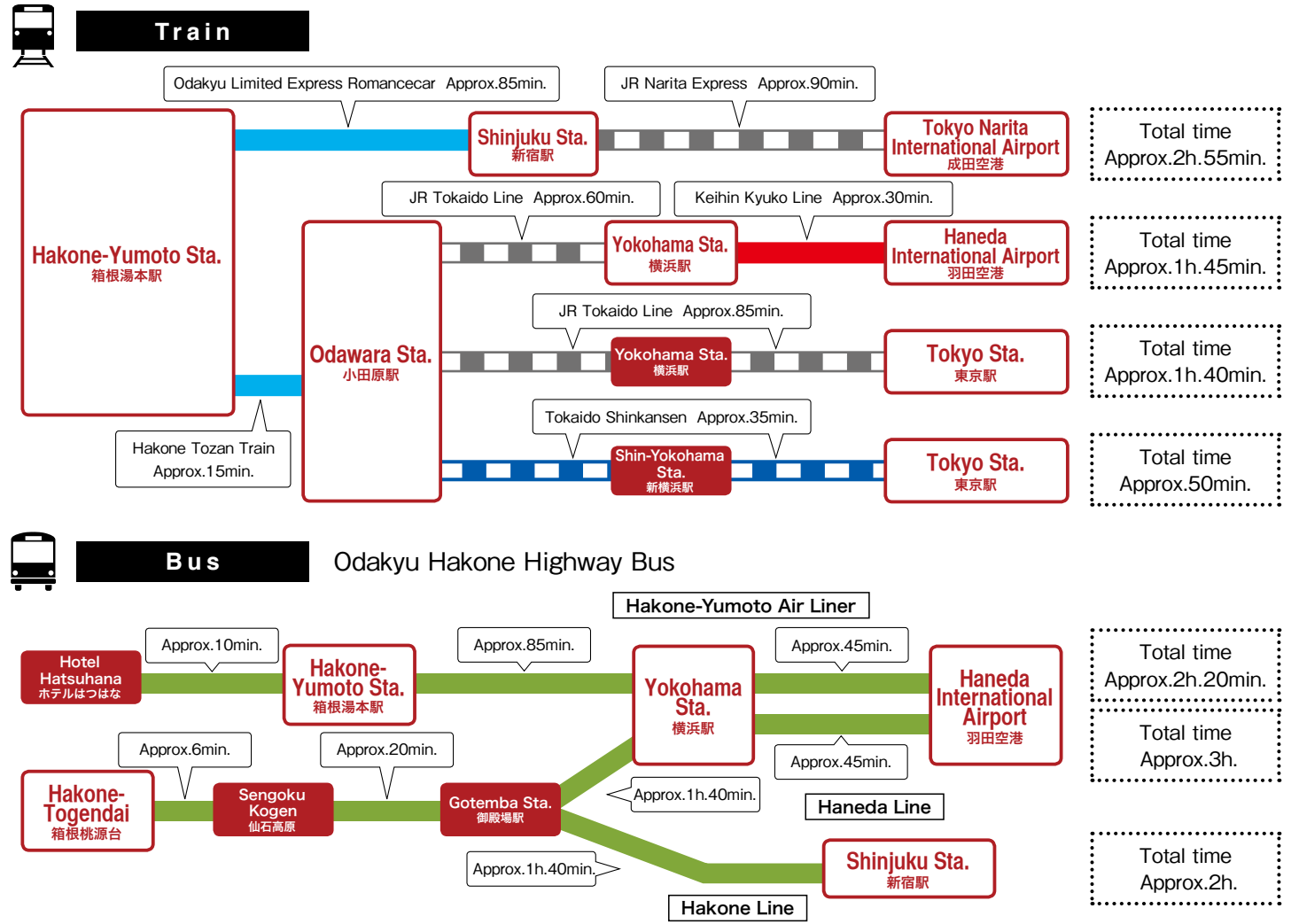


Point 1 Simple Japanese

If you can learn some simple Japanese, it will be useful when trying to communicate.

Greeting and Daily Conversation		Shopping and Eating	
Yes / No	hai / iie	How much is it?	Ikura desu ka?
Good Morning	ohayo (gozaimasu)	What do you recommend?	Osusume wa nani desu ka?
Hello	konnichiwa	What is this?	Kore wa nani desu ka?
Good evening	konbanwa	Do you have ○○?	○○ wa arimasu ka?
Goodbye	sayonara	I'll have this, please.	Kore o kudasai
Thank you	arigato (gozaimasu)	Can I pay using my creditcard?	Kurejitto Kādo de shiharai dekimasu ka?
Excuse me	sumimasen		
I'm sorry	gomennasai		
It's delicious	oishi		

Sightseeing	
Where is the ○○?	○○ wa doko desu ka?
I want to go to ○○.	○○ ni ikitai desu
Toilet	toire
Station	eki
Bus Stop	basunoriba
Tourist office	kanko annaijo
Hospital	byouin
How long will it take?	Jikan wa dore gurai kakarimasu ka?
Could you please take my/our picture.	Shashin o totte kudasai
Can you speak English?	Eigo wa hanasemasu ka?
I lost my ○○.	○○ o nakushimashita

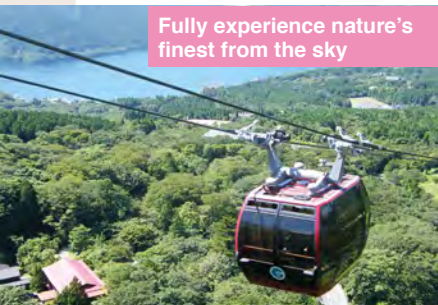


*It is an example. Estimated time is subject to change depending on operation and road condition.

Let's Enjoy Hakone's Various Rides!

Whether cruising through the sky, crossing a lake, ascending or descending mountain trails on wheels or ropeway, Hakone boasts exciting ways to go and a chance to experience magnificent nature.

Fully experience nature's finest from the sky



Enjoy Heavenly Views



※ Operation is suspended between Sounzan and Owakudani stations due to construction from February 13 to March 7, 2019. Replacement bus service is available.

Hakone Ropeway

☎0465-32-2205
www.hakoneropeway.co.jp/foreign/en/

Enjoy the views during a 30-minute ride across 4 kilometers between Sounzan and Togendai stations, including the amazing Owakudani volcanic valley, Lake Ashi, and magnificent Mt. Fuji.

Hakone Tozan Cable Car

Travels at approximately 1.2 kilometers to connect Gora and Sounzan stations in 10 minutes.



※ Operation is suspended between Gora and Sounzan stations due to construction from December 4 to 21, 2018. Replacement bus service is available.

Hakone Tozan Railway

Travel from Odawara to Gora stations while enjoying the surrounding wilderness and breathtaking views from railroad bridges.

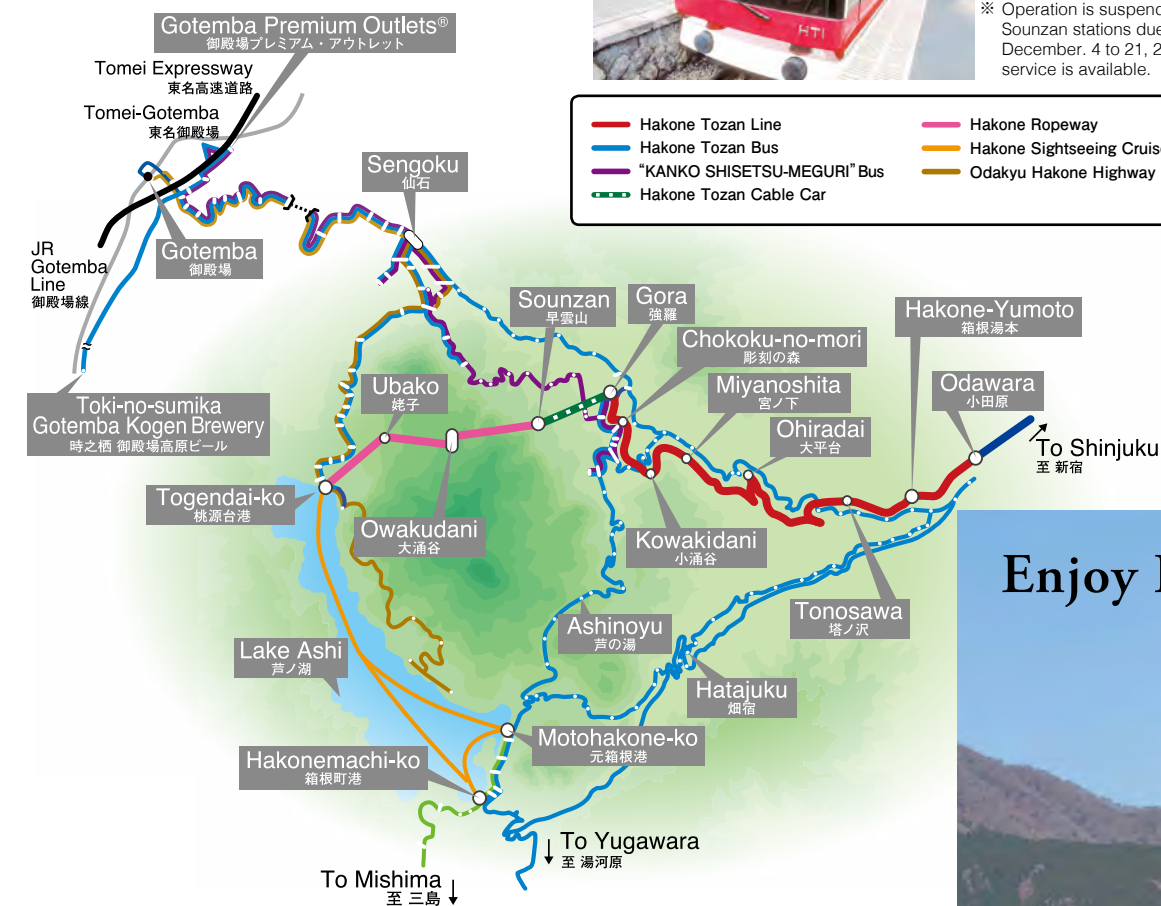


Steepest pitch in Japan

Between Hakone-Yumoto and Kowakidani stations is an 80/1000 gradient, the steepest in Japan for an adhesion railway.

Switchback

The railcar climbs the steep incline in a switchback zig-zag, changing directions back and forth.



Owakudani original curry and rice with soft-boiled egg



Owakudani Ekisyokudo
(The restaurant in Owakudani Station)

Note: Access to the Owakudani area may be restricted due to volcanic gas emission.

Enjoy 130-meter view!

Sounzan Station is 757 meters high, and Owakudani Station 1,044 meters high, a difference of 287 meters traveled in about 10 minutes. Enjoy the breathtaking view of Owakudani from a gondola height of 130 meters!

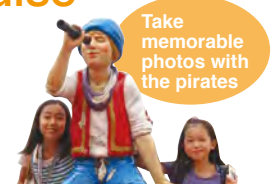


Hakone Sightseeing Cruise

☎0460-83-7722
www.hakone-kankosen.co.jp/foreign/en/

Operates between Hakonemachi, Moto-Hakone and Togendai on Lake Ashi. Enjoy the excellent hakone skyline and a panoramic view of Mt. Fuji.

Take memorable photos with the pirates



Enjoy Lake Ashi Cruise



Royal II

Three Fine Ships

Three different sightseeing ships — the red Royal II, the chic Victory, and the Vasa with its elegant sculptures — take you to the fascinating cruise on Lake Ashi.



Victory



Vasa

Hakone Lake Hotel

We are proud of "Mayu-no-mori" hot spring



Only 3-minute walk from Togendai Station.

Café & Souvenir HOTORIYA

Visiting old, learn new.



hakonemachi-ko



"KANKO SHISETSU-MEGURI" Bus

This comfy way to go sports a fancy, retro-looking design as it circles tour locations like museums, with skylight windows for breathtaking views of sky and trees.



Hakone Tozan Bus

Many buses operate, offering easy connections as it crisscrosses Hakone's fascinating mountain roads.



Odakyu Hakone Highway Bus

Offers direct transit from Shinjuku, Tokyo, Haneda Airport and Yokohama to Hakone and Gotemba.

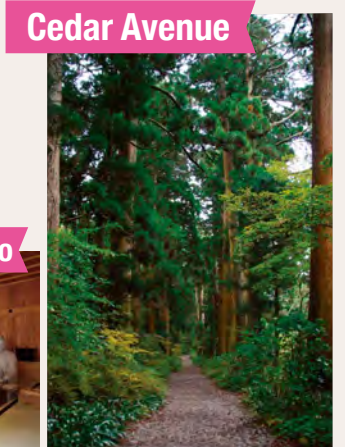
Recommendation See page 11 for Information on great savings with your Hakone Freepass.

Recommendation Unlimited ride on the Hakone Sightseeing Cruise and the Hakone Ropeway with Sightseeing Cruise & Ropeway 1Day Ticket / Hakone Freepass

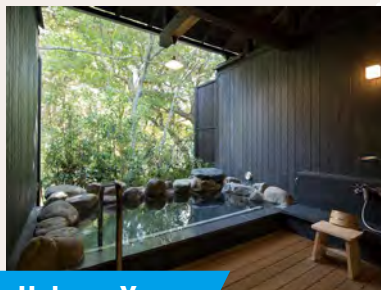
Recommended Courses

to Enjoy Hakone

1 RIDES AND HISTORY COURSE



2 NATURE COURSE



A Convenient, Value-priced Excursion Ticket

HAKONE KAMAKURA PASS



Ride the Odakyu Line and various transportations in Hakone, Enoshima and Kamakura as much as you like!

Hakone

Unlimited use of 8 Hakone-area transportation modes
 ① Hakone Tozan Line ② Hakone Tozan Bus ③ "KANKO SHISETSU-MEGURI" Bus (Tourist-Attraction Sightseeing Bus/Hakone Tozan Bus) ④ Hakone Tozan Cable Car ⑤ Hakone Ropeway ⑥ Hakone Sightseeing Cruise ⑦ Odakyu Hakone Highway Bus ⑧ Tokai Bus Orange Shuttle

*Unlimited use of ②, ⑦ and ⑧ only within designated zones shown on map. *Cannot be used on transport other than ① to ⑧ or on scheduled sightseeing buses. *For ⑦, passengers with reserved seats have priority. No boarding if all seats are occupied.

Enoshima/
Kamakura

Unlimited rides of all Enoden lines

Odakyu Line

Unlimited rides of all Odakyu lines

<Fares>

Adults	Children (6-11)
6,500 yen	2,250 yen

The prices are subject to charge.

<Period of validity>

3 days

*The period of validity is indicated by the stamp on your ticket. *Regardless of what time you start using the pass, the period of validity will end when transport operating hours end on the third day.

https://www.odakyu.jp/english/passes/hakone_kamakura/



Take the quick, comfortable Romancecar to Hakone and Katase Enoshima! [Reservation required]



Passengers with a HAKONE KAMAKURA PASS can board the Romancecar (reservations required) if they purchase additional express ticket.

*Shinjuku to Hakone-Yumoto: approx. 75min *Normal express train: approx. 115min.
 *Shinjuku to Katase-Enoshima: approx. 65min *Normal express train: approx. 70min.

<Romancecar limited Express surcharge>

limited Express Surcharge	Odawara	Hakone Yumoto	Katase Enoshima
From Shinjuku	890 yen	1,090 yen	620 yen

Places where the Freepass is available

• **Odakyu Sightseeing Service Center, Shinjuku West** [Business hours 8:00-18:00]

Odakyu Sightseeing Service Center is special service counter for foreign tourists. English speaking staff are always available. They offer information about sightseeing along the Odakyu line in places like Hakone and Enoshima, as well as sales of tickets and Freepasses.

TEL:03-5321-7887
FAX:03-5321-7886

WEB:https://www.odakyu.jp/english/index_after/



1st floor (Ground Floor), Odakyu Line Shinjuku Station West Exit

>>> **Hakone Navi** Hakone Travel and Transportation Information Website <https://www.hakonenavi.jp/english/>

※1 Operation is suspended between Gora and Sounzan stations due to construction from December. 4 to 21, 2018. Replacement bus service is available.

※2 Operation is suspended between Sounzan and Owakudani stations due to construction from February 13 to March 7, 2019. Replacement bus service is available.

Must See in Hakone

箱根の代表的な観光スポット

Sengokuhara 仙石原



Sengokuhara Pampas Grass Fields 仙石原スキ草原

台ヶ岳の裾野に広がるスキの草原で、秋の箱根を彩る名所。秋風になびく一面黄金色の風景は見事！



Owakudani 大涌谷

約 3,000 年前の箱根火山により誕生。箱根温泉の泉源地で、火山活動の迫力が現在も感じられる。ここから富士山を望むことができる。

Moto-Hakone, Hakone-Machi 元箱根・箱根町

Hakone Shrine 箱根神社

奈良時代中期に創建された神社、関東総鎮守として崇められてきた。開運厄除け、心願成就、交通安全のご利益で知られている。



Hakone Sekisho (Check-point) 箱根関所

江戸時代、箱根は江戸（現在の東京）と京都をつなぐ東海道の交通の要だった箱根関所は、徴税や検問のための施設で、当時の施設が再現されたもの。



Miyanoshita, Gora 宮ノ下・強羅



Hakone Gora Park 箱根強羅公園

1914年に開園したフランス式庭園。噴水を中心に左右対称に造園されており、四季折々の花や陶芸、茶室などが楽しめる。



Chisuji falls 千条の滝

蛇骨川上流にある高さ3m、幅25mの横長の滝。苔むした岩肌をすだれ状に静かに流れる夏にはホタル、秋には紅葉も見られる。



Hakone Stone Buddhas 箱根石仏群



精進池周辺には、今から約700年前の鎌倉時代から室町時代前期に造られた石仏や石塔が点在。中でも鎌倉時代の磨崖仏、六道地藏は、関東随一の大きさを誇る。

Hakone Old Tokaido Road 箱根旧街道



Amazake Chaya 甘酒茶屋

江戸時代初期創業の茶屋。東海道随一の難所と言われた箱根旧街道にある。創業当時から変わらない甘酒を、ぜひ味わってみよう。



Ishidatami 石畳

江戸時代初期、旅人が歩きやすいようにと整備された石畳の道。江戸時代から変わらない風景が残る。

Odawara 小田原



Odawara Castle 小田原城

室町時代に西相模一帯を支配していた大森頼春が築城。その後北條家五代が居城し、戦国時代には日本最大の城郭だったと言われている。



Hotoku Ninomiya Shrine 報徳二宮神社

1894年(明治27年)、小田原城に隣接して創建。以来、御祭神の農学者および哲学者として知られている二宮尊徳で有名。



Odawara Fishing port 小田原漁港

サバやイワシ、アジなどたくさんの魚が水揚げされる漁港。周辺には気軽に海鮮料理が味わえる施設がある。

Hakone-Yumoto 箱根湯本

Hakone-Yumoto 箱根湯本

箱根で最もにぎわう温泉街。老舗旅館から日帰り温泉まであり、駅前商店街には、飲食店やお土産店が並んでいる。



Yumoto-Kenban 湯本見番

湯本の芸妓さんたちをとりまとめる施設。芸妓さんたちはここで日々、踊りや唄などの稽古をしている。季節に合わせてイベントを開催する。





Delectable Seafood Rice Bowl Dishes

Kaisendonya, as its name indicates, specializes in rice bowls topped with seafood (kaisendon) from Odawara and Sagami Bay that deliver satisfying taste and volume. Managed by a fishmonger, the restaurant offers matchless ingredients and freshness. Regulars come from near and far not only for about 40 kinds of kaisendon but also for its sashimi and tempura.

Kaisen-Donya Odawara Kaishu
海鮮丼屋 小田原 海舟

- ☎ 0465-24-2237
- MAP P-14
- 1-14-55 Sakaecho, Odawara, Kanagawa
- 11:00-16:30 (till 19:30 on Sat./Sun./holidays)
- Open daily
- 3-minute walk from Odawara Station (JR/Odakyu line)

Original Japanese Cuisine in Historic Setting

Dine on original washoku (Japanese cuisine) in a leading restaurant of Odawara going back more than 120 years, located in a 90-year-old building declared a nationally designated tangible cultural property. In this historic setting, you'll sit down to a delectable meal of ingredients bought fresh every morning at a local market. Enjoy sushi, tempura, and sashimi prepared by our own itamae (master chef). Every dish is made for taste and appearance as well as requests for vegetarian, muslim, kosher, or other religious servings (reservation required; enquire if for that very day).

Daruma Ryoriten
国指定登録有形文化財 のれんと味だるま料理店

- ☎ 0465-22-4128
- MAP P-14
- 2-1-30 Honcho, Odawara-shi, Kanagawa
- 11:00-20:00 (last order)
- Open daily
- 8-minute walk from Odawara Station (JR, Odakyu)
- URL: <http://www.darumanet.com/>



- 1 Chinese-style gabled eaves and hipped roof feature in this building declared a nationally designated tangible cultural property.
- 2 Set meals from ¥6,000. Savor authentic Japanese cuisine to your heart's content.
- 3 Beautiful Kiri-no-Ma has classic Japanese-style furnishings as well as chairs.



- 1 A thrilling adventure in the treetops, more than 10 meters high.
- 2 Admission (including insurance): adults (18 or over) ¥3,600; children (ages 6-17) ¥2,600. Family discounts available.

Thrilling Adventure in the Forest

An outdoor park filled with trees whose origin is in France. Zip among the treetops in our special safety harness and enjoy 40 different activities. Our two-hour course can be challenged by first-grade elementary school students and above. Even adults will appreciate the sense of accomplishment.

Forest Adventure Odawara
フォレストアドベンチャー・小田原

- ☎ 080-4330-4030
- MAP P-31
- 4391-1, Kamenokuyama, Kuno, Odawara, Kanagawa
- 9:00-17:00 ■ No fixed holidays
- 15-minute bus ride from Odawara Station (JR/Odakyu Line)
- <http://www.forest-adventure.jp>



Hakone Tourist Information Center

Obtain the latest information of the whole Hakone area, such as sample trip plans and the best spots of the season here. English-speaking staff is always waiting to help plan your trip around Hakone.

Hakone Tourist Information Center
Open hours 9:00~17:45 (open every day)
TEL 0460-85-5700

MAP P-18

Point 2

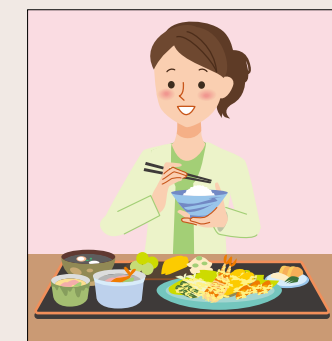
Japanese Customs for Rooms and Meals

Please take particular care for characteristic Japanese culture and customs when eating meals or staying at *ryokan* (Japanese-style inns) which have a traditional Japanese atmosphere.



- 1 It is standard to remove your shoes in the entry hall before entering a room.

In the front entryway take off your shoes while facing forwards and then enter the room. You should then bend down and turn your shoes to face the other way, aligning them neatly.



- 2 Bowls should be held in your hand when eating.

The bowl containing your rice as well as your soup bowl and other bowls should all be held in your hand while eating from them. Don't squeeze the chopsticks too strongly, hold them vertically, cross them over, or stab your food with them.



- 3 Try wearing your yukata around the ryokan.

A yukata is a traditional type of Japanese clothing, often worn after bathing or while sleeping. Be sure to cover your body first with the right-hand side, then left-hand side. When staying at a ryokan, you're welcome to wander around in yukata.

Simple Facts about Japanese-Style Rooms and Tatami Mats

- A Japanese-style room is one laid with tatami mats. One appealing feature is the rooms may be used for many purposes, such as a living room, bedroom, or guest room. A single tatami mat is roughly 180 cm x 90 cm, and is counted as 1 'jo' (a specific Japanese counter for tatami mats).
- Tatami mats provide Japan-style flooring. The face of tatami mats is woven grass, meaning they are highly absorbent, warm in winter, and cool in summer. Their fragrance also has a relaxing effect.

Seafood Gourmet Theme Park Odawara Hayakawa Gyoson

小田原早川漁村

Go Portside
for Good Food
and Fun!

80min.
All you can eat and drink



Experience otokoji service
—done with great spirit—
every 30 minutes!



etc...

Be ready for whatever comes
to delight your palate!

Feast on fresh seafood BBQ
to your heart's content!



<http://gyoson.com>

1F Aburiya fishermen's hamayaki

☎ 0465-24-7804 ■ Hours: 10:00-22:00

general, ¥2,980;
elementary school, ¥1,500;
pre-school, ¥800;
age three and younger, free

All you can
eat and drink
(80 min.)

- 1F Umaimono Yatai (vendors) ■ Hours: 11:00-16:00
- 1F Kaneyoshi souvenir shop ■ Hours: 10:00-17:00
- 2F Kaisendonya Kaishu (seafood rice bowl restaurant)
■ Hours: weekdays, 11:00-17:00; Sat., Sun., hol., 10:00-17:00
- 2F Gyoko no Shirasu Ichiba ■ Hours: 11:00-16:00
(house specialty, whitebait)

【 Odawara Hayakawa Gyoson 】

☎ 0465-24-7800
1-9 Hayakawa, Odawara-shi
■ Hours: 10:00-22:00, daily (varies by branch)
■ Access:
5 min. by taxi from Odawara Station
5 min. on foot from Hayakawa Station
(JR Tokaido Line)
15 min. by taxi from Hakone-Yumoto Station

【 Daini (Second) Gyoson 】

☎ 0465-23-3360
1-11-2 Hayakawa, Odawara-shi
■ open daily

Reservations
only

Point 3

Shrine and Temple Etiquette

Shrines are dedicated to Shinto gods, and temples to Buddhist figures such as bodhisattvas and various incarnations of Gautama. In both of these sacred places you should move and act calmly and speak quietly.



1 Bow slightly before entering a shrine's torii or a temple gate

The ground and space beyond a shrine's torii or a temple gate are considered sacred. Bow slightly before passing through torii or temple gate. As the center of the shrine walkway is the path of a sacred being, visitors should walk slightly to the right or left.



2 Rinse hands and mouth at the chozuya (ritual ablation pavilion)

After passing through shrine or temple entry, you'll find a small pavilion for rinsing hands and/or mouth before you step up to the sacred space occupied by shrine god or Buddhist deity.

Perform the ablation in five simple steps: ① with your right hand, dip the ladle into water and rinse your left hand; ② switch hands and rinse your right hand; ③ take the ladle with your right hand and pour some water into your left palm, and raise that cupped water to your mouth and rinse (taking care that your mouth does not directly contact any part of the ladle); ④ pour water onto your left hand to cleanse it; ⑤ raise the ladle cup straight up, perpendicular to the ground, to let the remaining water pour down the handle and clean it, and then return the ladle to its original spot on the fountain, face down.



3 Offering Ritual: Ring bell and toss money into offering chest

These days coins or bills are used as an offering to deities. In the past, these were made in the form of rice. There is no set amount to offer, so you should decide how much to give according to your wish or prayer, purification ritual, gratitude, or other matter. Temples usually don't have a rope pull, but if there is one, do as in a shrine; if none, make your silent pronouncement and toss gently into the slatted grate atop the offering chest.



4 Shrine Salutation: Bow twice, clap twice, and bow once to greet the deity

Bow deeply before a shrine's outer sanctuary and then make two bows, each at a 90-degree angle. Raise hands to chest center, Western-prayer style, and clap twice at a shrine but not a temple. Return hands to chest center and pray. Lower hands to sides and bow once, at a 90-degree angle. Bow again, deeply, and step back.

5 Shrine and Temple Option: amulet or paper votive

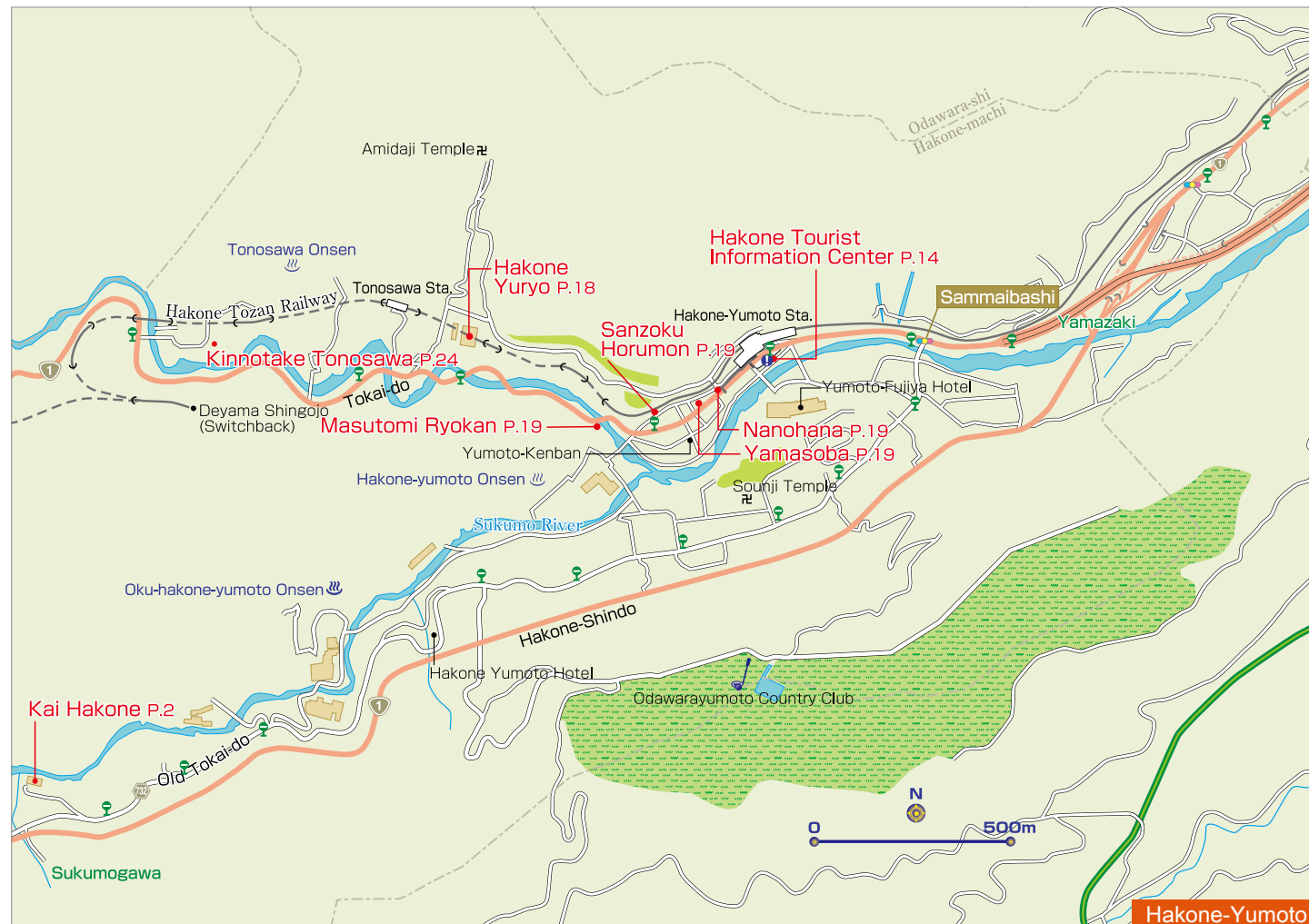
After making an offering, many visitors stop by a building where votives and amulets are sold. They also often draw paper fortunes. An amulet is worn to receive the deity's blessing; a paper votive is read to learn one's fortune. You also have the choice, according to custom, to tie the paper votive on a branch of a tree—on temple or shrine grounds—or you can take it home.



Distinguishing points of a temple

- Temples usually do not have torii but a formal structure of wood, often two stories high, as their gate. Bow slightly before passing through the overhead structure.
- When making offerings or praying at a temple, do not clap the hands. Bow deeply and then bring hands together, chest center (Western-prayer style), as you make your pronouncement.

(with thanks to Hakone Shrine)



Hot-Spring Inn Focused on Washoku

Relax in comfort and style at this Japanese inn, a five-minute walk from Hakone-Yumoto Station, where you can immerse yourself in a rooftop open-air bath (¥2,000/45 min., total fee for two) boasting the best hot-spring water quality in Hakone. As you bathe, enjoy a magnificent view of Hakone's beautiful sunrise or sunset beyond the mountains.

Mamane-yu Masutomi Ryokan

ままね湯 ますとも旅館

☎ 0460-85-5775

MAP - P 18

- 656 Yumoto, Hakone-machi, Ashigarashimo-gun, Kanagawa
- 5-minute walk from Hakone-Yumoto Station (Hakone Tozan Railway)
- <http://www.mamane-yu.jp/>

Hot soba noodles topped with Japanese yam, wild vegetables, and egg yolk. Yamaimo Soba ¥1,180. Peak Taste You've Known and Loved for Half a Century. Yamatake Soba ¥1,300. Tendon (regular) ¥1,320. Rice bowl loaded with deep-fried jumbo shrimp, fish, and fresh veggies. Healthy soba noodles served cold, heaped with grated daikon and mushrooms. Hakone Jinenjo YAMASOBA. TEL: 0460-85-7889. 704 Yumoto, Hakonemachi, Ashigarashimo-gun, Kanagawa. 11:00 ~ 19:00 Closed: Thursdays. No Parking Credit Card not accepted. <http://www.yamasoba.com>

森の温泉。森のめし。箱根温泉

HOT SPRINGS

Large communal baths: "Honden Yurakuan Oyu"
Indoor baths, open-air baths, pottery baths, and sauna facilities

Adults (including Age 13 and over) : 1,400 yen
Children (Age 6-12) : 700 yen
Children aged 5yrs. and under are not admitted.

Opening Hours: Open 365 days a year (the resort may occasionally be closed for maintenance work)
Weekdays: 10:00-21:00 (last admission at 20:00)
Saturdays, Sundays and public holidays: 10:00-22:00 (last admission at 21:00)

Private open-air baths: "Hanare Yuya Kaden"
19 private rooms available

Reservations can be made by telephone (0460-85-8411) up to one month in advance.

Fee for private room use (per room, per 60-minute period):

Type 1 (7rooms)	Type 2 (8rooms)	Type 3 (4rooms)
4,000yen	5,000yen	6,000yen

Opening Hours: Open 365 days a year (the resort may occasionally be closed for maintenance work)
Weekdays: 10:00-21:00 (last admission at 20:00)
Saturdays, Sundays and public holidays: 10:00-22:00 (last admission at 21:00)

Hakone Yuryo can be reached easily from both Haneda Airport and Narita Airport, and is situated in one of Japan's most outstanding hot spring resort areas.

Experience a comfortable, enjoyable train journey on the Odakyu Line!



odakyu



Fun and Popular Yakiniku Until Late

For succulent yakiniku (grilled meat), this is the place to go: rich varieties of meat served with care for handmade sauce, dressing, and even kimchi. Among many conveniences, like nearby Hakone-Yumoto Station, is our uniquely late closing time of 1:00 AM. Also savory are our reasonable lunch sets from ¥1,150 (excluding tax).

Sanzoku Horumon

山賊ホルモン

☎ 0460-85-5337

MAP - P 18

- 724-5 Yumoto, Hakone-machi, Ashigarashimo-gun, Kanagawa
- 12:00-25:00 (last order 24:30)
- Closed on Thursdays
- 3-minute walk from Hakone-Yumoto Station (Hakone Tozan Railway)



Onsen Manju of Established Confectioner

Founded in 1905, Nanohana sells just-steamed onsen manju, sweet buns sold at hot springs. Inside a thin skin made with Okinawa black sugar is smooth sweet bean-paste seasoned with sea salt. Savor one of Hakone's famous confections as you stroll at ease through our hot-spring resort town.

Manju-ya Nanohana

まんじゅう屋 菜の花

☎ 0460-85-7737

MAP - P 18

- 705 Yumoto, Hakone-machi, Ashigarashimo-gun, Kanagawa
- 8:30-17:30 (until 18:00 Sat/Sun./holidays) ■ Open daily
- 1-min. walk from Hakone-Yumoto Station (Hakone Tozan Railway)
- <http://www.nanohana.co.jp/>

Experience *Hakone*

Yosegi-Zaiku



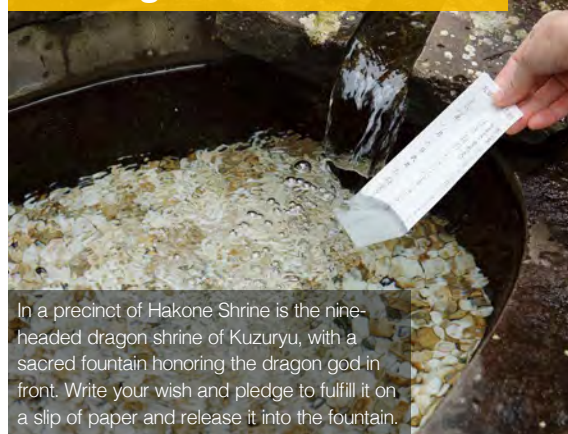
Hakone's traditional marquetry craft dates back to the Edo period (1603–1867). Experience making a trick box (*karakuri-bako*) using beautiful pieces of wood.



Inside Hakone Gora Park is Hakuundo tearoom, built during the Taisho era (1912–1926), where you can tour the space and enjoy powdered green tea (*matcha*) and Japanese sweets.

Tencha

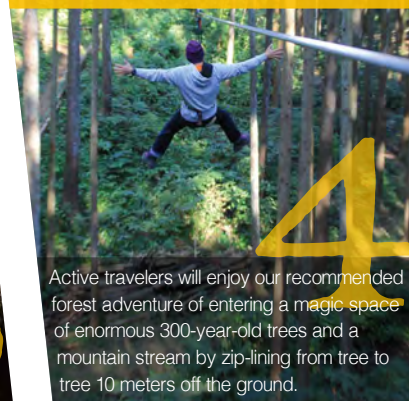
Wishing at Shrine Fountain



In a precinct of Hakone Shrine is the nine-headed dragon shrine of Kuzuryu, with a sacred fountain honoring the dragon god in front. Write your wish and pledge to fulfill it on a slip of paper and release it into the fountain.



Tree Climbing and Zip Line Adventure



Active travelers will enjoy our recommended forest adventure of entering a magic space of enormous 300-year-old trees and a mountain stream by zip-lining from tree to tree 10 meters off the ground.



Armor and Ninja Costumes

At Odawara Castle, dress like a samurai in armor and helmet, a kimono-clad princess, or in the costume of Fuma ninja who supported the Hojo Clan.

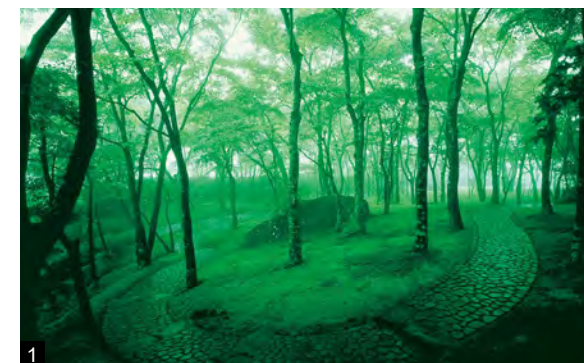
1 Hakone Trick Museum ☎0460-83-6604
 ■ 10:00-17:00 (last admission, 16:00) ■ Daily [MAP P26 ②]
 ■ Fee: Trick box (small), from ¥1,980 ■ Reservation required

2 Hakuundo, Hakone Gora Park ☎0460-82-2825
 ■ 10:00-12:00, 13:00-16:00 ■ Daily [MAP P21]
 ■ Admission Fee: adults (13 and older), ¥550; Inside tour, ¥500 (tea & sweets included)

3 Hakone Shrine ☎0460-83-7123
 ■ 9:00-16:00 ■ Daily ■ Fee: ¥500 [MAP P26 ②]

4 Forest Adventure Odawara ☎080-4330-4030
 ■ 9:00-17:00 ■ Closed: No fixed holidays [MAP P31]
 ■ Fees (accident insurance included): adults (18 and older), ¥3,600; children (1st grade, elementary school, to 17), ¥2,600 ■ Family discount available ■ Reservation required

5 Tokiwagi Gate, Odawara Castle Honmaru Hiroba ☎080-6887-2154
 ■ 9:00-16:00 (last admission, 15:30) ■ Daily [MAP P14]
 ■ Fees (costume dress-up): adults (junior high schoolers and older), ¥500; children (elementary schoolers and younger), ¥300



Experience the Beauty of Japan

Aesthetic pleasures await you in oldest art museum of Hakone. Stroll a Japanese garden after viewing such classic ceramics as vessels from the Kamakura and Muromachi periods (12th–14th century), Momoyama-period pottery (late 16th century), and Chinese ceramics. Or relax from a seated garden view in a tea house serving green tea and a seasonal sweet. Bring this issue and enjoy entry-fee discounts for adults (¥100) and for students (¥50).

Hakone Museum of Art

箱根美術館
 ☎0460-82-2623 [MAP P21]
 ■ 1300 Gora, Hakone-machi, Ashigarashimo-gun, Kanagawa ■ Apr.–Nov.: 9:30-16:30 / Dec.–Mar.: 9:30-16:00 (last admission 30 mins. before closing) ■ Closed Thur. (open if a holiday / Nov.: open daily) ■ Entry fees: adults, ¥900; high school and university students, ¥400; junior high school students and younger, free ■ 1-minute walk from Koenkami Station (Hakone Tozan Cable Car) ■ <http://www.moart.or.jp/hakone>

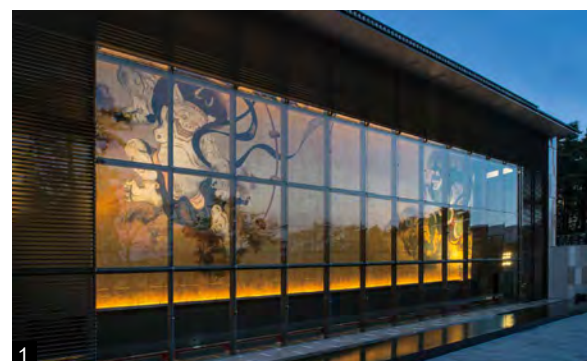
Traditional Japanese Inn Since 1883

Enjoy the true spirit of Japanese hospitality as experienced from 1883 at a Registered Cultural Property establishment

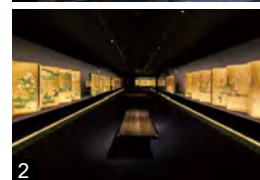
503 Kowakidani, Hakone-Machi, Ashigarashimo-gun, Kanagawa
 Access by public transportation is nearby at the Horai-en bus stop from Hakone-Yumoto Station (bound for Moto-Hakone or Hakone-machi), a 20-minute ride.

三河屋旅館 MIKAWAYA RYOKAN

TEL.+81(0)460-82-2231
<http://www.hakone-mikawayaya.com/language/09en.htm>



1 Magnificent mural of Fujin and Raijin (wind and thunder gods, respectively), 12 x 30 meters, titled Wind/Time, sweeps you into a mythic world from the museum entrance.



2 Resplendent gallery exhibiting only gold folding-screens throughout the year.

Swept Up by Time and Beauty

The Okada Museum of Art boasts one of the largest indoor exhibition spaces in Hakone. About 450 Japanese and Asian paintings, ceramics, and other works from ancient times to the present are regularly exhibited throughout its five floors. Immerse yourself first in a world of beauty and then in a dining facility and footbath cafe for a relaxing experience complete with aesthetic appreciation.

Okada Museum of Art
岡田美術館

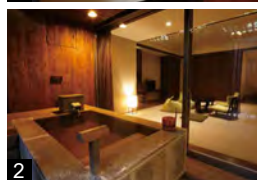
☎ 0460-87-3931

MAP P21

- 493-1 Kowakidani, Hakone-machi, Ashigarashimo-gun, Kanagawa ■ 9:00-17:00 (no admission after 16:30) ■ Open daily ■ Entry fees: adults/university students, ¥2,800; elementary/junior high/high school students, ¥1,800; garden admission, ¥300.
- 20-minute bus ride from Hakone-Yumoto Station (Hakone Tozan Railway) and 1-minute walk from Kowakidani bus stop. ■ URL: <http://www.okada-museum.com/en>



1 Time for a nighttime chat in the irori-style living room



2 Premier room with an outdoor hot spring bath for pleasurable immersion anytime, in private and at your own pace (overnight stay from ¥20,000)

Stay at a Modern Japanese Hot Spring Inn

Take off your shoes for a delightful stay amid the hospitality of our hot spring inn, and relax in a guestroom offering calm ambience, contemporary Japanese décor, and free WiFi. Luxuriate in outdoor baths set not only in a Japanese garden, a source of pride, but also some guestrooms. Good taste also awaits in our restaurant, where the latest in Japanese-Western fusion is served with a wondrous view of the Hakone mountains.

Laforet Club Hakone Gora Yunosumika
ラフォーレ倶楽部 箱根強羅 湯の楼

☎ 0460-82-2121

MAP P21

- 1320 Gora, Hakone-machi, Ashigarashimo-gun, Kanagawa
- 5-minute walk from Naka-Gora Station on Hakone Tozan Cable Car Line
- <http://www.laforet.co.jp/gora/>



1 A perfect match for the great texture of barley and rice.
2 Our "Supreme Lunch Set" (¥2,680 + tax) is served with traditional Japanese dishes, including tofu, dried fish, and fried kamaboko fish cake.

Delicious Traditional Japanese Food

Japanese yam is a beloved traditional food from ancient times. Its sticky texture is a perfect match for Japanese rice! Experience the real thing for traditional Japanese cuisine and culture with our fine set menu: tofu, dried fish, and miso soup. Consult with us as well for halal and vegetarian menu.

Hakone Jinenjonomori Yamagusuri
箱根 自然薯の森 山薬

☎ 0460-82-1066

MAP P21

- 224 Miyanoshita, Hakone-machi, Ashigarashimo-gun, Kanagawa
- Weekdays: 10:00 - 20:30; Sat./Sun./holidays: 7:00 - 20:30 (last order, 20:00)
- Open daily
- 9-minute walk from Miyanoshita Station (Hakone Tozan Railway)

Harmony of Sculpture and Nature



The Hakone Open-Air Museum, opened in scenic Hakone in 1969. It was the first museum in Japan devoted to sculpture in the open air. Situated on roughly 70,000 square meters of parkland, the Museum has distant vistas of mountain and sea that change with the changing seasons.



THE HAKONE OPEN-AIR MUSEUM

彫刻の森美術館 0460-82-1161 MAP P21

- 1121 Ninotaira, Hakone-machi, Ashigarashimo-gun, Kanagawa ■ 9:00-17:00 (Last admission: 16:30) ■ 365 days/year ■ Adults: 1,600 yen University and high school students: 1,200 yen Middle and elementary school students: 800 yen ■ Hakone Tozan Railway to Chokoku-no-Mori Station, from which it is a 2-minute walk to the museum ■ <http://www.hakone-oam.or.jp>

Let's enjoy unique spas!! YUNESSUN Spa Resort

YUNESSUN (swimsuit area)

Hot Spring Amusement Park and Spa Resort

Hakone Kowakien YUNESSUN Spa Resort has many kind of spas. You can have fun at this all-weather facility, even on rainy days. You'll find many fun spas here. And we have many kind of shops and restaurants that you can enjoy all day.

SPECIAL COUPON 000-2161

LET'S HAVE FUN YUNESSUN SPA RESORT!!

- > You can rent a swimsuit **50% OFF**
- > You can use free towels (1 set for 1 person)

	Adult	Child
Combined (YUNESSUN & Mori no Yu)	¥4,100 ▶ ¥2,800	¥2,100 ▶ ¥1,500
YUNESSUN (swimsuit area)	¥2,900 ▶ ¥2,000	¥1,600 ▶ ¥1,100
Mori no Yu (bathing area)	¥1,900 ▶ ¥1,300	¥1,200 ▶ ¥700

This is discount ticket, please show this at the front desk. Valid: 2019/12/31

Transportation (By bus and train)

- From Odawara Sta., take a bus bound for "Hakone-jinja-iriguchi/Hakonemachi-ko" and get off at "Kowaki-en" (approx. 40min.)
- From Hakone-Yumoto Sta., take a bus bound for "Hakone-jinja-iriguchi/Hakonemachi-ko" and get off at "Kowaki-en" (approx. 20min.)

Business hours [YUNESSUN] 9:00-19:00 / [Mori no Yu] 11:00-20:00

Parking fee ¥1,200/day Seniors (60 and over) and disabled get discounts. For more information, please contact to us. Child admission age starts from 3 years old to elementary school age.

Hakone Kowakien YUNESSUN
Tel. 0460-82-4126 **YUNESSUN** Spa Resort

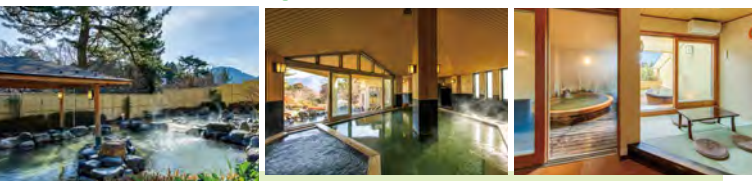
1297, Ninotaira, Hakone-machi, Ashigarashimo-gun, Kanagawa-Japan 250-0407
Closed: Dec. 3 (Mon.)-7 (Fri.), 2018
Note: Please inquire about closing dates for 2019.

<https://www.yunessun.com/en/>



Hakone Kowakien YUNESSUN Usage Notes
As visible tattoos are strictly forbidden within the pool and pool area, we strongly recommend the use of swimwear that hides such body art or rash guards, the latter being available for rent.

Mori no Yu (bathing area)



Mori no Yu you can feel closer to nature of Hakone while bathing. We also have private bath (¥3,000/hour-).

Shopping



Shop "Mio Mall" is boasting the wide selection of items. You'll find Hakone souvenirs!

Restaurants

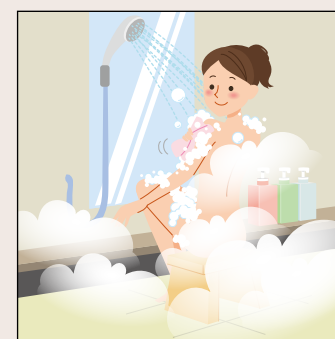


We have many kinds of restaurant: A buffet, Italian, Japanese, and more that can be enjoyed by guests and non-guests alike.

Point 4 Pointers on Bathing Etiquette

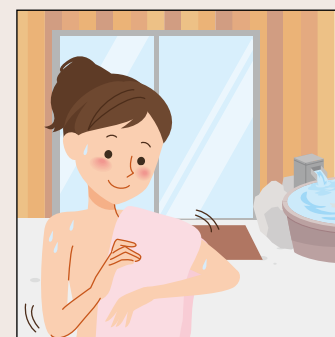
Point 4

These are places to relax and heal your mind and body, so enjoy your time calmly and refrain from any public pool-type antics.



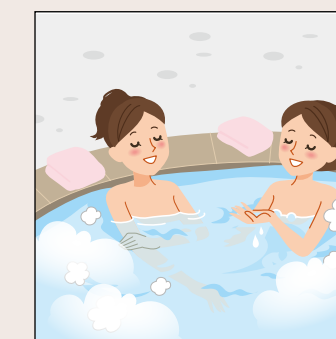
1 Wash before entering the bath!

Wash face and body, then rinse off all soap before entering the tub. Enter naked, without wearing a towel, and enjoy soaking—only soaking.



3 Dry off after bath and before entering dressing room

Dry off with a towel in the bathing area, before entering the dressing room, to prevent the dressing room floor getting wet.



2 No towels in the tub

Enter the bath slowly, to avoid splashing. As a matter of public hygiene, don't put or let your towel into the water and, in general, follow common-sense manners as well as these etiquette pointers.

Onsen FAQs

- Onsen water can be quite dense and the heat intense, so avoid getting dizzy by limiting your time: don't soak too long (no more than 15 minutes). Immerse yourself up to neck or waist, no deeper, and be sure to hydrate before and after a bath.
- Bath water may have some "floaties" that are natural mineral components, not trash or filthy bits, so don't worry if something tiny comes your way.

Inviting Warmth of Japanese Culture: The Pleasure of Onsen (Hot Springs)

Stay &
Enjoy

1 Matsuzakaya Honten

松坂屋 本店

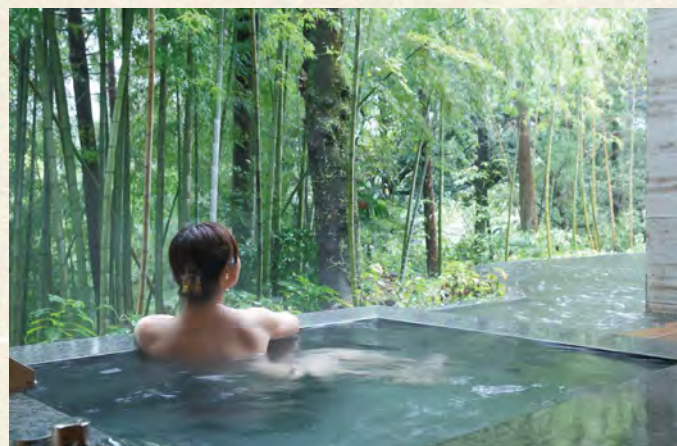


Japan's Great Inn for Over 350 Years

Since 1662, the Inn has maintained the traditions which reflects the History that will make your trip memorable in one of the Hakone's leading historical onsen.

2 Kinnotake Tonosawa

金乃竹 塔ノ澤

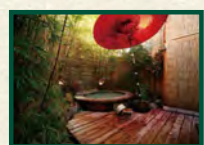


Remarkable Immersion in Nature

It has an extensive site of 66,116 Square Meter integrated with nature. All the rooms with an out-door bath for the mental and physical liberation with outstanding service.

3 Okudo Saryo Rikyuan

おくと茶寮 利休庵



Savory Dining and Bathing

Savor healthy, meat-free kaiseki cuisine prepared with care. Also enjoy the milky-white hot spring.



5 Hakone Botanical Garden of Wetlands

箱根湿生花園



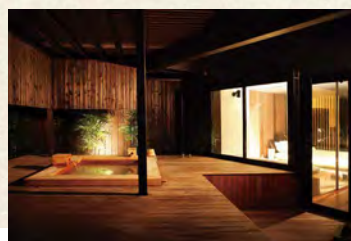
Floral Delight in Four Seasons

We have about 1,700 varieties of flora, abounding in the seasonal beauty which make this garden popular destination for taking photos.



4 Kinnotake Sengokuhara

金乃竹 仙石原



Hakone's Premier Luxury Inn

Enjoy the rooms with an outdoor bath emphasizing private feeling. An accommodation full of playful spirit with ancient stories as a theme.

Make your trip
more
enjoyable!

History of Hakone, Odawara

歴史

In Hakone, the Hakone volcano has produced caldera and onsen (hot springs) over many long years. It is an area overflowing with mystery and history, where countless legends and the vestiges of many great people still live on.

<Nara Period to the Warring States Period>

Hot springs were opened in the Nara period (around 700AD). The hot springs were related to the Late Hojo Clan of the Warring States period.

According to one theory, the hot springs of Hakone were first opened in the Nara period (around 700AD). According to folklore of the time, "When 'Kiyosada', a priest of Kaga and disciple of Taicho, came to Hakone-Yumoto to pray and study, the hot springs began to flow, and the small pox which had been afflicting the people was cured". During the Warring States period (from around 1495 AD onwards), the Late Hojo Clan ruled as daimyos over the whole Kanto region for five generations from their base in Odawara Castle. Odawara prospered as a center of politics, economy and industry. Soun Hojo, the founder of the clan, was enshrined in 'Soun-ji' in Hakone-Yumoto, so military commanders would often visit Hakone to pay homage. The source of the springs near Soun-ji that the military commanders bathed in still remains, and the hot water there still continues to flow.



Odawara Castle was the ruling castle for five generations of the Late Hojo Clan from around 1496 onwards. It is now a castle ruins park, where beautiful views can be seen from the castle towers.

A statue of Soun Hojo at the west entrance of Odawara Station.



<Warring States Period to Edo Period>

A place of healing for troops during Hideyoshi Toyotomi's attack on Odawara (1590). Its name come to back be known nationwide.

The 'Battle of Odawara' (1590) was daimyo Hideyoshi Toyotomi's final battle in his unification of the country. Hideyoshi spent two months fortifying Ishigakiyama in order to capture Odawara Castle. It is said that during the protracted war, Hideyoshi built a stone bathtub that utilized the hot springs of Jakotsu river in Miyanoshita, and used it to heal his soldier's wounds, as well as bathing in it himself.

In addition, at the height of the war, Hideyoshi held a tea ceremony and SEN no Rikyu, Ieyasu Tokugawa, Masamune Date, and Yodogimi all visited, allowing the area to prosper. It is said that Hime-no-mizu, a famous mineral water from Ohiradai, was used by Hideyoshi Toyotomi for the tea ceremony, and that the daughters of the Late Hojo Clan and the Toyotomi Clan used it as a face lotion. From then on, many women visited Hakone in order to follow their example.



The 'Taiko Stone Bathub' in the Miyanoshita hot spring. This is the remains of the open-air bathtub created by Hideyoshi to heal his troops, and is no longer used for bathing.

<Edo Period to Meiji and Taisho Periods>

Transportation networks arranged by Ieyasu Tokugawa and Yukichi Fukuzawa, and the development of popular tourist attractions.

In 1603, Ieyasu Tokugawa, who set up the Edo shogunate, began work on the Tokaido highway. A hot spring health resort was born in Hakone, and it became famous for the '7 Hakone Hot Springs'. However, the inaccessibility of the hilly roads became known as the most perilous part of the Tokaido, and then in 1626 the shogunate established the 'Hakone Checkpoint' in order to secure defence of Edo.

From the Meiji period onwards, the 'Hakone Checkpoint' was abolished, and development of the area progressed as a location for recuperation and sight-seeing. Yukichi Fukuzawa enjoyed visiting the hot springs of Hakone, and after talking to local sympathizers, he assisted with the development of National Route 1 linking Odawara and Hakone. In 1877, Fujiya Hotel was opened as a hotel aimed at overseas visitors. Railroads were also established thanks to Odakyu Electric Railway, and the area developed as a popular, accessible tourist location.



The main role of the Hakone Checkpoint was checking for "letting in guns and letting out women". They particularly kept out a watchful eye for carried weapons, and wives of daimyos fleeing from Edo where they had been forced to live and held hostage.

※歴史や伝承の解釈には諸説あります。There are various theories regarding the history and the traditions.

1. Matsuzakaya Honten

57 Ashinoyu, Hakone-machi, Ashigarashimo-gun, Kanagawa

☎0460-83-6511
http://www.matsuzakaya1662.jp/

MAP P26②

2. Kinnotake Tonosawa

191 Tonosawa, Hakone-machi, Ashigarashimo-gun, Kanagawa

☎0460-85-9800
http://kinnotake-tonosawa.com/

MAP P18

3. Okudo Saryo Rikyuan

817-460, Sengokuhara, Ashigarashimo-gun, Kanagawa

☎0460-85-8282
http://www.sengokuhara.com/

MAP P26①

4. Kinnotake Sengokuhara

817-342, Sengokuhara, Ashigarashimo-gun, Kanagawa

☎0460-85-9200
http://www.kinnotake.com/

MAP P26①

5. Hakone Botanical Garden of Wetlands

817, Sengokuhara, Ashigarashimo-gun, Kanagawa

☎0460-84-7293
http://hakonekanko.com/
Open 9:00-17:00 / Closed from Dec. 1 to Mar. 19 / Admission: ¥700 adults, ¥400 primary school students

MAP P26①



Bathe and Breathe in Forest and Nature

Our hotel of 37 guest rooms, 11 detached villa suites, cafe, common space and more set on a vast site of 55,230 sq.m comprising facilities of ultimate luxury is something rare in Hakone. Special attention is given to your dining pleasure, as seen in food cooked on logwood fire to extract the choicest flavors from ingredients and fresh-baked bread from our restaurant's bakery served for breakfast. Other savory services include kaiseki cuisine served in a Japanese-style room with more than a century's history, Owakudani hot springs, and BMW car-sharing.

Nest Inn Hakone Hyosekikaku
NEST INN HAKONE 俵石閣

☎ 0460-83-9090 MAP-P26 ①

■ 1290 Sengokuhara, Hakone-machi, Ashigarashimo-gun, Kanagawa ■ Access: 25-minute bus ride from Hakone-Yumoto Station (Hakone Tozan Railway) ■ URL: <http://www.nestinn-h.co.jp>



- 1 Eleven detached villa suites, surrounded by trees, are in harmony with nature.
- 2 Added pleasure is a fireside chat with other guests.
- 3 Enjoy handmade dishes focused on local ingredients in a restaurant open also to non-hotel guests.

NEST INN HAKONE Villa Suites

nestinn-h.co.jp/stay/villa-suites/

A "NEST" full of riches in HAKONE

11 retreat villas all made of "karamatu" wood surrounded by 55,000 m² Geopark forest with "kaiseki" restaurant in the 100year's sukiya-style private house.

<Room>



<Nature>



<Food>



NEST INN HAKONE Villa Suites
1290 Sengokuhara, Hakone-machi Ashigarashimo-gun, Kanagawa
T,0460-83-9090 info@nestinn-h.co.jp



NEST INN HAKONE

<https://nestinn-h.co.jp/>

Please come and experience "NEST"
Where you can be cozy and comfortable in the 55,000 m² rich forest ecosystem
HAKONE Geopark and casual French restaurant serving regional authentic food.

NEST INN HAKONE 1290, Sengokuhara Hakone-machi Ashigarashimo-gun Kanagawa

T,0460-83-9090 info@nestinn-h.co.jp



1 The garden overlooking Owakudani is famous.
2 Enjoy a live performance of canzone in our cafe-restaurant.

Let your heart escape to the Venice of old

This is the only museum in Japan where you can see a complete presentation of Venetian glass. Our extensive collection showcases not only Venetian glass that charmed European royals and nobles from the 15th to the 19th century, but also innovative creations by contemporary artists active after the 20th century. The elegance and beautiful brilliance of this glass art will carve a lasting impression in your mind.

Hakone Venetian Glass Museum 箱根ガラスの森美術館

☎ 0460-86-3111 MAP-P26 ①

■ 940-48 Sengokuhara, Hakone-machi, Ashigarashimo-gun, Kanagawa ■ 10:00-17:30 (last admission: 17:00) ■ Closed Jan. 15 (Tue.)-25 (Fri.), 2019 ■ Admission fees: adults, ¥1,500; high school and university students, ¥1,100; primary and junior high students, ¥600. ■ 25-minute bus ride from Hakone-Yumoto Station (Hakone Tozan Railway) ■ <http://www.hakone-garasunomori.jp>



1 Beautiful marbling in select kuroge wagyu is a proof of great taste.
2 Dine leisurely at your table, complete with modern foot well. Station pick-up and drop-off are available.

Yakiniku Restaurant for Fine Kuroge Wagyu

Come to this popular yakiniku ("grilled meat") restaurant and savor the rich taste of quality kuroge wagyu (Japanese black beef) at reasonable prices. Cook your selection atop a smokeless grill, dip it in our secret house sauce, and delight in the umami of this fine beef cut. Also enjoy a wide variety of a la carte dishes. With closing hours at 10 PM, you can sit back and dine at leisure with family and friends!

Korean Cuisine Yakiniku Gyeongbokgung 韓国料理・焼肉 景福宮

☎ 0460-84-5529 MAP-P26 ①

■ 74-1 Sengokuhara, Hakone-machi, Ashigarashimo-gun, Kanagawa ■ 11:30-14:00/17:30-22:00 (last order 21:30) ■ No fixed holidays ■ 25-minute bus ride from Hakone-Yumoto Station (Hakone Tozan Railway) ■ URL: <http://www.oka-da-museum.com/en>



1 Assortment of five appetizers, ¥1,000; tomato sauce pasta with (Mochi) brand-pork, ¥1,300; margherita pizza, ¥1,800.
2 The open atrium gives you a feeling of abundant spaciousness, complemented superbly by beautiful views of Lake Ashi stretching out before your eyes.

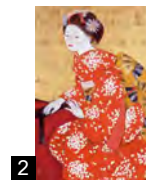
Italian Cuisine on the Lakeside

With 30 varieties of pizza baked in a large Italian pizza oven, we offer you a genuine taste of Italy! You can enjoy delicious Italian cuisine with cheeses and wines crafted in Italy. Next door you'll find a museum, a specialty shop, and a selling watercolors by Toyoo Tamamura.

Ashinoko Terrace Italian Restaurant La Terraza 芦ノ湖テラス イタリアンレストラン ラ・テラツァ

☎ 0460-83-1074 MAP-P26 ②

■ 61 Moto-Hakone, Hakone-machi, Ashigarashimo-gun, Kanagawa
■ Weekdays: 10:30-20:00; Sat./Sun./holidays: 9:00-20:00 (last order, 19:30)
■ Open daily (except February) ■ 40-minute bus ride from Hakone-Yumoto Station (Hakone Tozan Railway) ■ <http://www.ashinoko-terrace.jp/restaurant.html>



1 From the museum observation gallery perched atop a small hill, you can enjoy an emblematic view of Japan created by Lake Ashi and Mt. Fuji.
2 Maiko by Sho Ishimoto.

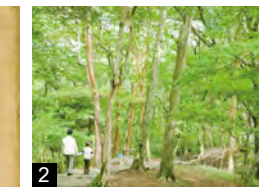
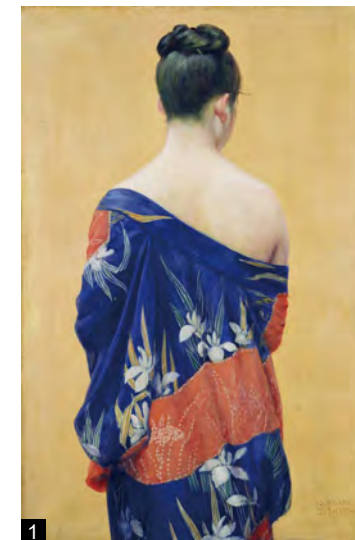
Nihonga Museum with a Magnificent View

The museum overlooks Lake Ashinoko, and on a clear day you can see Mt. Fuji. There are art exhibitions showcasing various themes centering on Nihonga selected from 4,000 pieces in our collection, ranging from works by great masters to fresh young talent. Enjoy tea served in artistic ceramics at the tea lounge. Hot sandwiches and pizza are also available.

Hakone Ashinoko Narukawa Art Museum 箱根・芦ノ湖 成川美術館

☎ 0460-83-6828 MAP-P26 ②

■ 570 Moto-Hakone, Hakone-machi, Ashigarashimo-gun, Kanagawa
■ 9:00-17:00 (last admission: 16:45) ■ Open daily ■ Admission: adults, ¥1,300; high school and university students, ¥900; primary and junior high students, ¥600.
■ 35-minute bus ride from Hakone-Yumoto Station (Hakone Tozan Railway) ■ <http://www.narukawamuseum.co.jp>



1 Kimono with Iris Pattern, Kimono with Iris Pattern, Saburotsuke Okada, 1927. Pola Museum of Art Collection
2 Nature trail offers a pleasant walk of about 20 minutes.

Appealing Art in Hakone's Natural Setting

The unique setting of Pola Museum enhances appreciation of its vast and compelling collection. Themed exhibitions, events, and more showcase over 10,000 works of Western paintings by acclaimed masters like Monet, Renoir, and Picasso as well as stellar Japanese paintings, prints, and sculpture plus Asian ceramics. As you enjoy walking the surrounding nature trails, be sure to note the harmonious integration of nature and architecture in the museum's highly acclaimed design, which won several awards, including the Architectural Institute of Japan Award.

Pola Museum of Art ポーラ美術館

☎ 0460-84-2111 MAP-P26 ①

■ 1285 Kozukayama, Sengokuhara, Hakone-machi, Ashigarashimo-gun, Kanagawa
■ 9:00-17:00 (no admission after 16:30) ■ Open daily ■ Entry fees: adults, ¥1,800; senior discount (over 65), ¥1,600; university/high school students, ¥1,300; junior high/elementary school students, ¥700 (free on Sat.) ■ 13-minute bus ride from Gora Station (Hakone Tozan Railway) ■ URL: <http://www.polamuseum.or.jp/english/>



1 Kinubiki Tempura Shoga Udon, ¥1,404.
2 Kinubiki Tenseiro, ¥1,944. Washoku artisanal cooks create dishes with such appeal that Japanese as well as Hollywood stars travel far and wide to be here.

Renowned and Novel Noodles

Kinubiki Udon offers finely rendered udon noodles of the highest-grade Japanese wheat and well-known Hakone water, kneaded together with grated Japanese burdock and sesame. This trademark udon is registered and enjoyed only in this restaurant.

Kinubiki no Sato 絹引の里

☎ 0460-83-5151 MAP-P26 ②

■ 6-10 Moto Hakone, Hakone-machi, Ashigarashimo-gun, Kanagawa
■ Daily Hours (with seasonal variation): 11:00-18:00, last order ■ Open daily
■ 40-minute bus ride from Hakone-Yumoto Station (Hakone Tozan Railway) ■ <http://www.kinubikinosato.jp> (in Japanese)



1 Steamy hot Odawara oden of many local ingredients simmered in dashi soup. Dip them in plum miso and enjoy.
2 Lake Ashi is in front of your eyes. No. 1 torii gate of Hakone Shrine is the landmark.

Savor Soul Food While Viewing Lake Ashi

Odawara's Maruu Tashiro, a long-established shop specializing in kamaboko (boiled fish paste) opened its branch in front of Motohakone Port of Hakone Pirate Ship in July 2018. Enjoy our array of goods fit for eating while walking—freshly deep-fried rounds of boiled fish paste, steamy hot oden, and Hakone manju. Space for eating-in is available.

Maruu Tashiro Motohakone Port Shop 丸う田代 元箱根港店

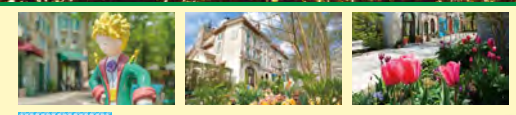
☎ 0460-83-5377 MAP-P26 ②

■ 6-21 Moto-Hakone, Hakone-machi, Ashigarashimo-gun, Kanagawa
■ 10:30-16:30 ■ No fixed holidays
■ 40-minute bus ride from Hakone-Yumoto Station (Hakone Tozan Railway)

The Little Prince Museum

箱根サン・チガブイ MUSEE DU PETIT PRINCE DE SAINT-EXUPÉRY A HAKONE TBS

Romantic Starry Night
from Nov.3,2018 to Jan.7,2019



Museum 9:00am~6:00pm (last admission 5:00pm)
Exhibition hall and Video hall business hours 9:00am~5:30pm
Restaurant 11:00am~6:00pm (last order 5:30pm)
Sweets menu 11:00am~5:00pm, last order
Meal menu 11:30am~5:00pm, last order
Audio guide app (free trial version)



909 Sengokuhara, Hakone-machi, Ashigarashimo-gun, Kanagawa-ken
TEL:0460-86-3700 <http://www.tbs.co.jp/l-prince/en/>

Closed day: The second Wednesday except March and August
Le Petit Prince™ Succession Antoine de Saint-Exupéry Licensed by 創 Le Petit Prince™ 星の王子さま™

Staff
Publisher
 Kazuhiro Nakamura
Editor in Chief
 Yoshiko Maki
Deputy Editor in Chief
 Koichiro Uramoto
Sales & Promotion Staff
 Sonomi Fujisawa Nao Sekine
Editor
 Kayoko Aihara Hiroko Matsubayashi
 Yoshiko Kanai
Designer
 Kana Inaba Azusa Takani
 NIPPON PRICOM,inc.
Photographer
 Junichi Ihara Megumi Sakurai
 Junko Nanba
Map Design
 Shigeko Kobayashi
DTP Staff
 Junna Shirasawa
Special Thanks
 McDAVIS ASSOCIATES,INC.
 NIPPON PRICOM,inc.
Cooperation 協力
 Odakyu Electric Railway Co., Ltd.
 小田急電鉄株式会社
 Odakyu Hakone Group
 小田急箱根グループ
 HAKONE TOWN
 箱根町
 HAKONE Convention Bureau
 箱根コンベンションビューロー
 Hakone Town Tourist Association
 一般財団法人箱根町観光協会
 Odawara City
 小田原市

Issue 発行
 INCLUDE Co., Ltd.
 株式会社インクルーブ
 http://www.misonet.com
 本誌の広告に関するお問い合わせは
 株式会社インクルーブ
 〒215-0021
 神奈川県川崎市麻生区上麻生1-5-1
 りそな新百合ヶ丘ビル5F
 営業企画部 ☎044-959-3750
Printing and bookbinding 印刷・製本
 SANKEI SOGO PRINTING Corporation
 サンケイ総合印刷株式会社
 次号は2019年5月発行予定です。



- A** Odawara 小田原
- B** Hakone-Yumoto 箱根湯本
- C** Miyanoshita / Kowakidani / Gora
宮ノ下・小涌谷・強羅
- D** Sengokuhara 仙石原
- E** Lake Ashi 芦ノ湖

Hakone/Odawara MAP

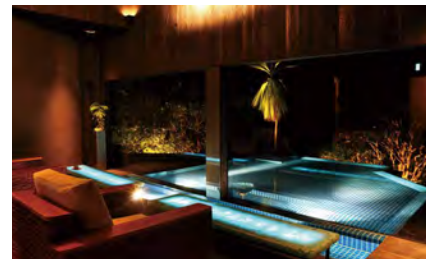


HAKONE GINYU



連山を見渡し
山紫水明の
境に遊ぶ

*The guest feel 5 senses in scenery and find so many impression,
This is our Ryokan concept.*



TEL. 0460-82-3355