

JAPAN



2016
Summer/
Autumn

vol.4

FREE

English
英語版

HAKONE

箱根

HAKONE/ODAWARA VISITOR'S GUIDE

Detailed
MAP
Included



Mt. Fuji and Lake Ashi

Mいi＊s‑M♡o☺
【ミスモ＊はこね】

Japanese Culture
and Etiquette



“A most exclusive Japanese retreat”

A stay in Gôra Kadan, the former retreat of the Imperial Family, Kanin-no-miya, situated in the heart of Hakone National Park, is an invitation to bring your five senses to life by immersing yourself in the ancient Japanese way of life.



The rooms have been designed in a minimalist style, and the hotel's facilities include a swimming pool, a spa, and a beauty salon.



ALL AROUND THE WORLD, UNIQUE IN THE WORLD Our 500 restaurants & hotels offer the finest experiences all over the world.

Hotel
GÔRA KADAN

2 guests occupancy 50,000~90,000yen
Room charge half board (dinner & breakfast) per person, per night.
All prices excluding tax/including service charge.

Tel. +81(0)460-82-3331

✉ reservation@gorakadan.com

Restaurant

Kaiseki KADAN 花 苑 花 壇

located inside the luxurious inn GÔRA KADAN

Restaurant of the Kaiseki cuisine

Tel. +81(0)460-82-3333

✉ kadan@gorakadan.com



Contents

- 5 Getting to Hakone
- 6 Let's Enjoy Hakone's Various Rides!
- 8 Transportation Hakone Freepass,
Tickets information
- 10 Events of the Year in Hakone
- 12 Must See in Hakone
- 14 Gourmet Foods & Good Goods
- 16 Odawara
- 18 Hakone-Yumoto
- 22 Miyanoshita, Kowakidani, Gora
- 24 Sengokuhara, Gotemba, Lake Ashi
- 28 Breathtaking Views of Mt. Fuji
- 29 Onsen Short List
- 30 Hakone / Odawara Map

【Culture and Etiquette】

- 4 Simple Japanese
- 9 Shrine and Temple Etiquette
- 21 Japanese Customs for Rooms and Meals
- 27 Pointers on Bathing Etiquette



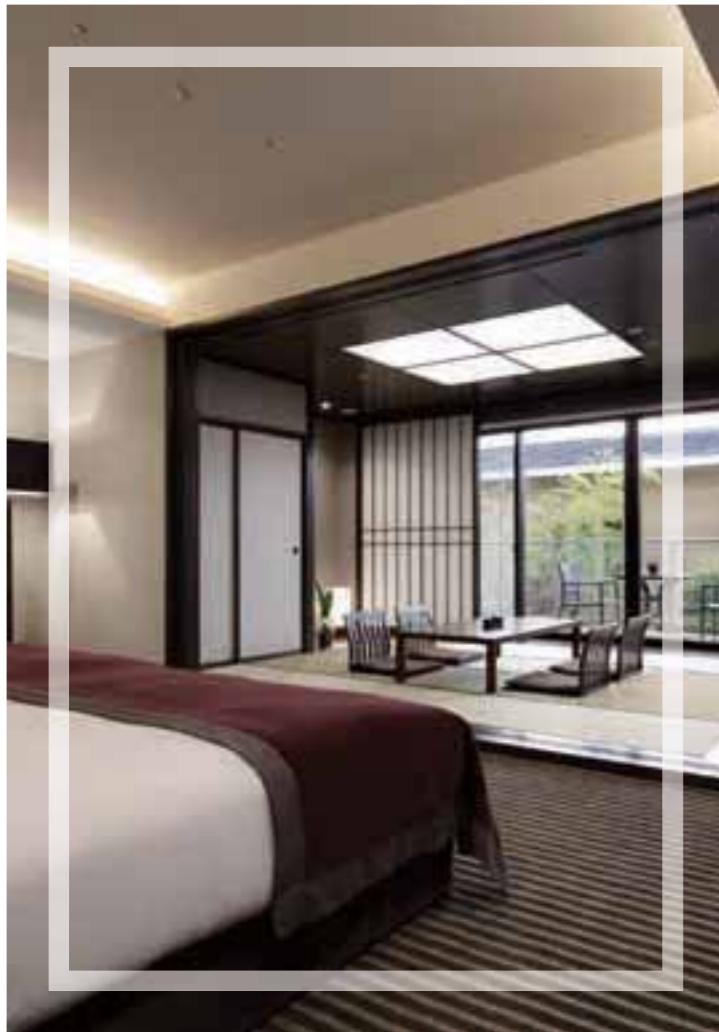
Hakone, known for its natural beauty that changes expressions with the seasons, is full of charms -- hot springs, museums and art galleries, historical buildings, leisure facilities, fantastic food and glorious view of Mt. Fuji, the world's cultural heritage site.

Please visit Hakone that made tourists of the world a captive, and make lots of memories there.

Information published in this magazine is as of May 11, 2016. There may be cases of prices having been changed since then, so please check with the stores before use. And there are instances of consumption tax or bathing tax, other service fees applied separately. The overnight stay prices are a single person charge on weekday (Monday to Thursday and Sunday, excluding the day before a holiday) overnight stay with two meals, for a room by two persons unless otherwise stated. ※ The details of what have been referred in this magazine could be changed or discontinued due to weather or other reasons. Please check with the organizer/facility/store before heading out.

Please note that the opening/business hours, charges, closed days, event opening periods and menu contents of facilities and stores published in this magazine are subject to change without notice.

Unauthorized reproduction/copying of photographs, illustrations, maps or articles in this magazine are strictly forbidden.



Your home away from home, Hyatt Regency Hakone

Pristine mountain forests. World-famous hot springs.
Get away from it all. Relax in luxurious comfort
combined with classic Japanese style and hospitality.

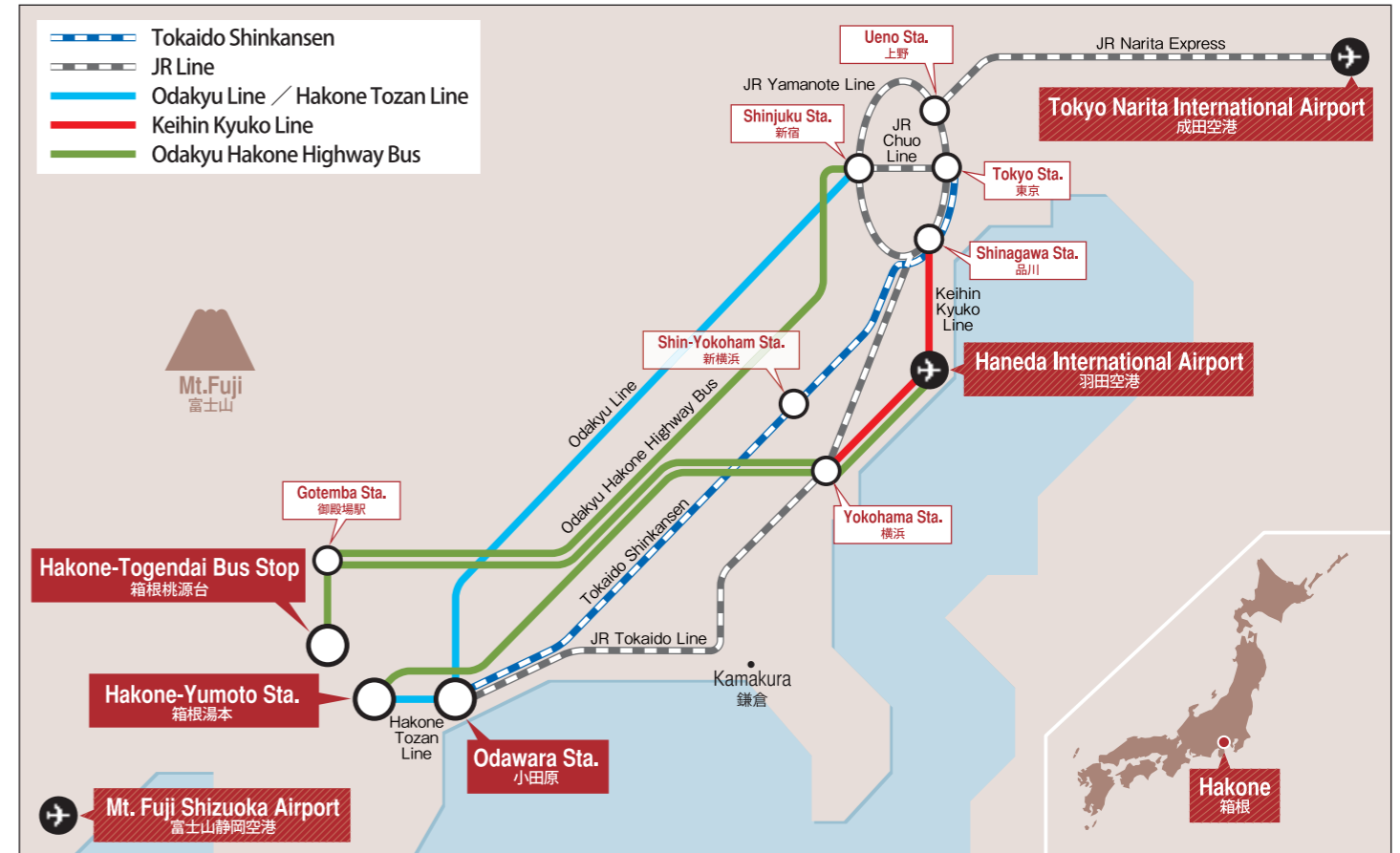


**HYATT REGENCY HAKONE
RESORT AND SPA**
1320 Gora, Hakone-Machi
Ashigarashimogun, Kanagawa
250-0408

Tel. 0460-82-2000
hakone.regency.hyatt.com

HYATT name, design and related marks are trademarks of Hyatt Corporation. ©2015 Hyatt Corporation. All rights reserved.

Getting to Hakone



Point 1

Simple Japanese

If you can learn some simple Japanese, it will be useful when trying to communicate.

Greeting and Daily Conversation

Yes / No	hai / iie
Good Morning	ohayo gozaimasu
Hello	konnichiwa
Good evening	konbanwa
Goodbye	sayonara
Thank you	arigato gozaimasu
Excuse me	sumimasen
I'm sorry	gomennasai
It's delicious	oishi

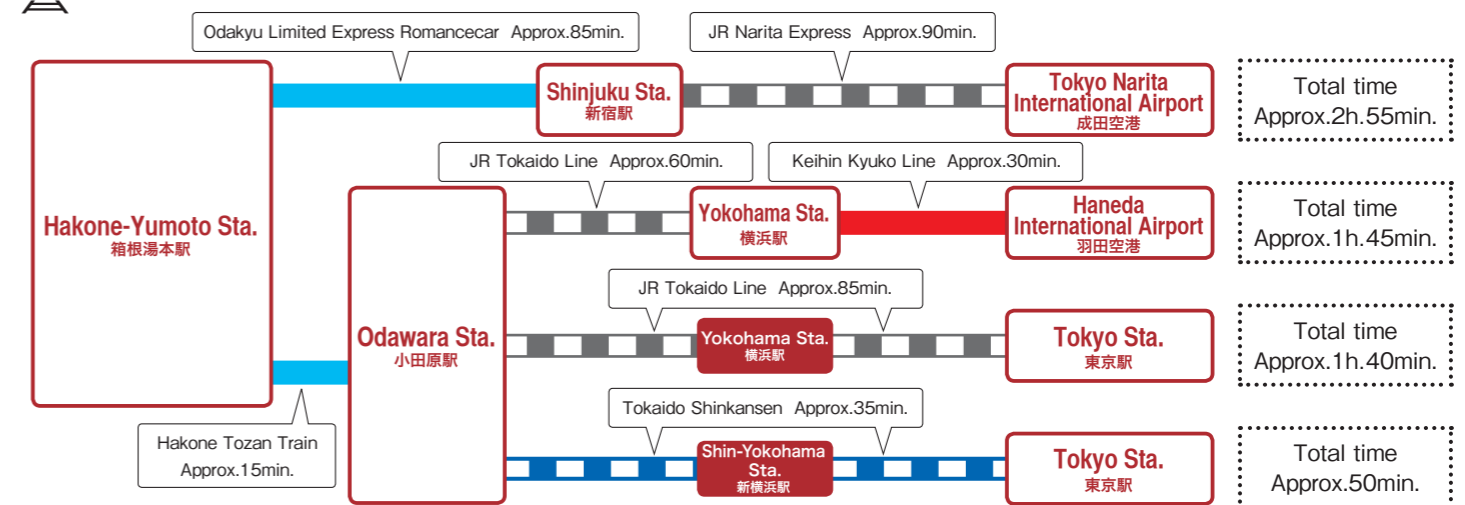
Shopping and Eating

How much is it?	Ikura desu ka?
What do you recommend?	Osusume wa nan desu ka?
What is this?	Kore wa nan desu ka?
Do you have ○○?	○○ wa arimasu ka?
I'll have this, please.	Kore o kudasai
Can I pay using my creditcard?	Kurejitto Kādo de shiharai dekimasu ka?

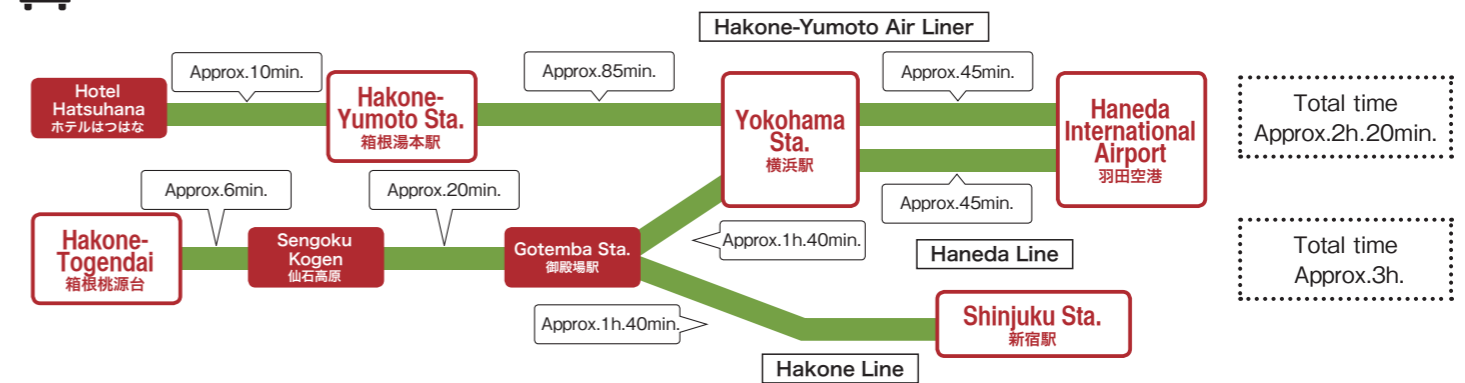
Sightseeing

Where is the ○○?	○○ wa doko desu ka?	How long will it take?	Jikan wa dore gurai kakarimasu ka?
I want to go to ○○.	○○ ni ikitai desu	Could you please take my/our picture.	Shashin o totte kudasai
Toilet	toire	Tourist office	kanko annaijo
Station	eki	Hospital	byouin
Bus Stop	basunoriba	Can you speak English?	Eigo wa hanasemasu ka?
		I lost my ○○.	○○ o nakushimashita

Train



Bus



*It is an example. Estimated time is subject to change depending on operation and road condition.

Let's Enjoy Hakone's Various Rides!

Whether cruising through the sky, crossing a lake, ascending or descending mountain trails on wheels or ropeway, Hakone boasts exciting ways to go and a chance to experience magnificent nature.

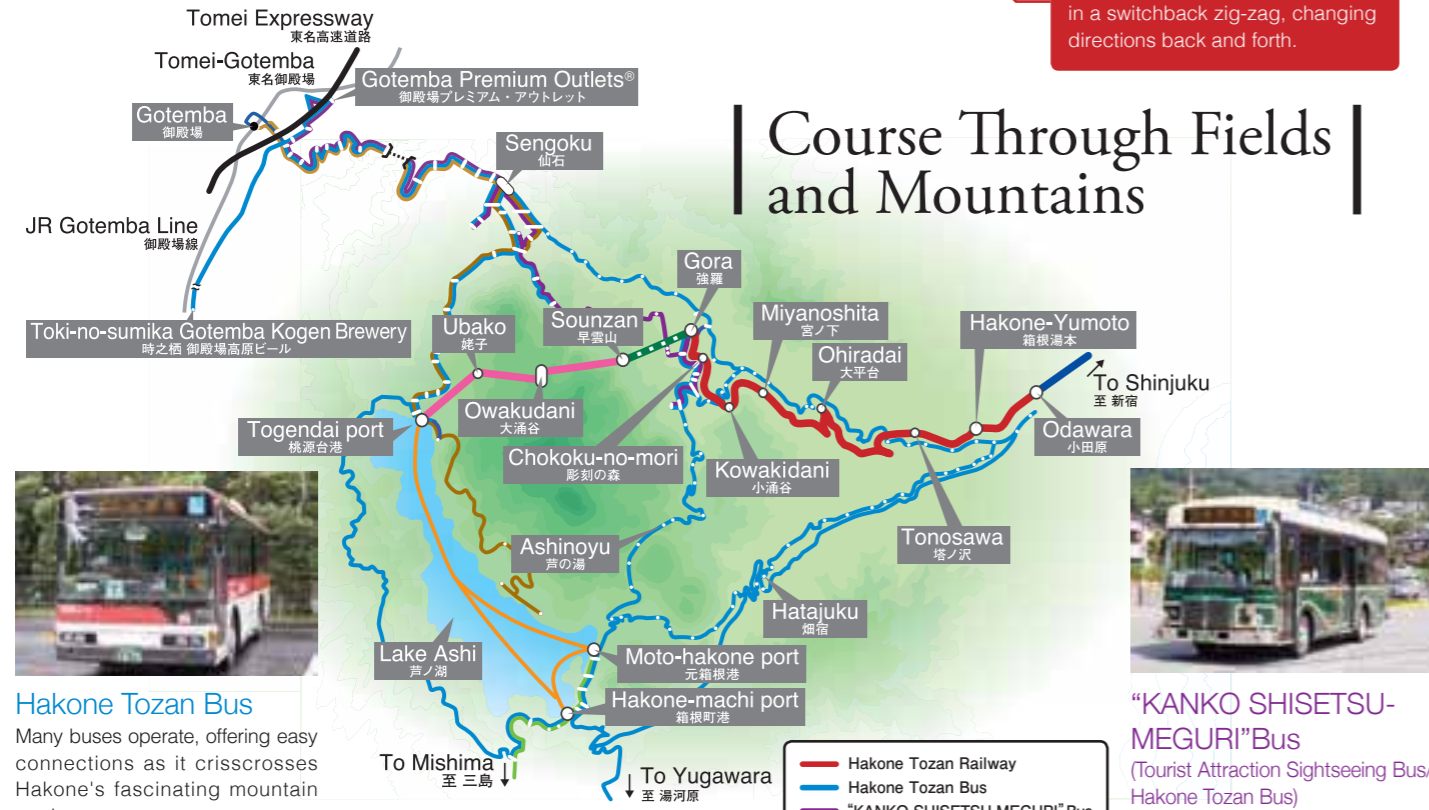


Hakone Tozan Cable Car
Travels at approximately 1.2km to connect Gora and Sounzan stations in 10 minutes.

Hakone Tozan Railway
Travel from Odawara to Gora stations while enjoying surrounding wilderness and breathtaking views from railroad bridges. Also check out Allegra, the new railcar model.



- **Steepest pitch in Japan**
Between Hakone-Yumoto and Kowakidani stations is an 80/1000 gradient, the steepest in Japan for an adhesion railway.
- **Switchback**
The railcar climbs the steep incline in a switchback zig-zag, changing directions back and forth.



Hakone Tozan Bus
Many buses operate, offering easy connections as it crisscrosses Hakone's fascinating mountain roads.



"KANKO SHISETSU-MEGURI" Bus
(Tourist Attraction Sightseeing Bus/Hakone Tozan Bus)
This comfy way to go sports a fancy, retro-looking design as it circles tour locations like museums, with skylight windows for breathtaking views of sky and trees.

- Hakone Tozan Railway
- Hakone Tozan Bus
- "KANKO SHISETSU-MEGURI" Bus
- Hakone Tozan Cable Car
- Hakone Ropeway
- Hakone Sightseeing Cruise
- Odakyu Hakone Highway Bus

Recommendation See page 8 for Information on great savings with your Hakone Freepass.

① Rides and Nature Course

Hakone-Yumoto Sta. → Hakone Tozan Railway → Gora Sta. → Hakone Tozan Cable Car → Koen-shimo Sta. → Walk → Hakone Gora Park → Walk → Koen-kami Sta. → Hakone Tozan Cable Car → Sounzan Sta. → Hakone Ropeway → Owakudani → Hakone Ropeway → Togendai Port → Hakone Sightseeing Cruise → Moto-hakone Port → Walk → Hakone Shrine → Walk → Moto-hakone Port → Hakone Sightseeing Cruise → Hakone-machi Port → Walk → Hakone Sekisho → Hakone Tozan Bus → Hakone-Yumoto Sta.

※ As of May 11, 2016, Hakone Ropeway operates only between Owakudani and Togendai stations. Please note that you may enter but not exit Owakudani Station building. Check out Hakone Navi (www.hakonenavi.jp/english/) for details on the service status of ropeway alternate buses and other transport.

② Hakone Old Tokaido Road Course

Hakone-Yumoto Sta. → Hakone Tozan Bus → Ichirizuka (Hatajuku) → Walk → Amazake Chaya → Walk → Stone-Paved Road → Walk → Cedar Avenue → Moto-hakone Port → Hakone Tozan Bus → Hakone-Yumoto Sta.

③ Sightseeing Course

Hakone-Yumoto Sta. → Hakone Tozan Railway → Kowakidani Sta. → Walk → Chisuji Falls → Walk → Kowaki-en → "KANKO SHISETSU-MEGURI" Bus → Hakone Garasunomori Museum (Venetian Glass Museum) → "KANKO SHISETSU-MEGURI" Bus → Gotemba Premium Outlets® → "KANKO SHISETSU-MEGURI" Bus → Kowaki-en → Hakone Tozan Bus → Hakone-Yumoto Sta.

Hakone Navi / <http://www.hakonenavi.jp/english/>



Hakone Ropeway

☎0465-32-2205
www.hakoneropeway.co.jp/foreign/en/

Enjoy the views during a 30-minute ride across four kilometers between Sounzan and Togendai stations, including the amazing Owakudani volcanic valley, Lake Ashi, and magnificent Mt. Fuji.

Enjoy 130-meter view!

Sounzan Station is 757 meters high, and Owakudani Station 1,044, a difference of 287 meters traveled in about 10 minutes. Enjoy the breathtaking view of Owakudani from a gondola height of 130 meters!



As of May 11, 2016, Hakone Ropeway operates only between Owakudani and Togendai stations. Please note that you may enter but not exit Owakudani Station building. Check out Hakone Navi (www.hakonenavi.jp/english/) for details on the service status of ropeway alternate buses and other transport.



View dark-green leaves in summer and flame-tinted leaves in autumn



Fully experience nature's finest from the sky

Owakudani original curry and rice

with deepfried pork cutlet with soft-boiled egg
Owakudani Ekisyokudo
(The restaurant in Owakudani Station)



Enjoy Lake Ashi Cruise

Hakone Lake Hotel

We are proud of "Mayuno-mori" hot spring
Only 3 minute walk from Togendai Station



Jan. 23rd 2016 OPEN!

Café & Souvenir HOTORIYA

Hakone-machi.port

Three Fine Ships

Three different sightseeing ships—the red Royal II, the chic Victory, and the Vasa with its elegant sculptures—take you to the fascinating cruise on Lake Ashi.

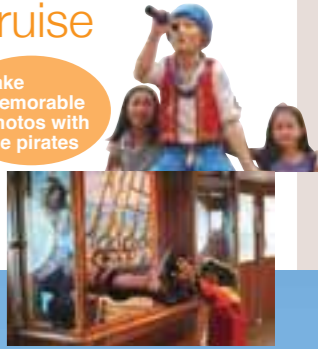


Hakone Sightseeing Cruise (Hakone Pirate Ship)

☎0460-83-7722
www.hakone-kankosen.co.jp/foreign/en/

operates between Hakone-machi, Moto-Hakone and Togendai on Lake Ashi. Enjoy the excellent hakone skyline and a panoramic view of Mt. Fuji.

Take memorable photos with the pirates



Recommendation Unlimited ride on the Hakone Sightseeing Cruise and the Hakone Ropeway with Sightseeing Cruise & Ropeway 1Day Ticket / Hakone Freepass



A convenient and economical excursion ticket Hakone Freepass

Enjoy the beauty of Hakone, surrounded by nature.

You can freely board eight different types of transportation in Hakone



All of the transport in the Hakone area which have this mark can be freely boarded.

For more information, refer to the brochure "箱根 HAKONE" available at all stations on the Odakyu line.

<8 different types of transportation>

- 1 Hakone Tozan Line
- 2 Hakone Tozan Cable Car
- 3 Hakone Ropeway
- 4 Hakone Sightseeing Cruise
- 5 Hakone Tozan Bus (in designated zones)
- 6 "KANKO SHISETSU-MEGURI" Bus (Tourist Attraction Sightseeing Bus/Hakone Tozan Bus)
- 7 Odakyu Hakone Highway Bus (in designated zones)
- 8 Tokai Bus Orange Shuttle (in designated zones)

<Sample fares>

	2 days	Adult	Child
From Shinjuku		5,140 yen	1,500 yen
From Odawara Gotemba		4,000 yen	1,000 yen

* Fares may vary depending on the starting station and length of validity. * 3 days ticket also available



<Examples of trips in Hakone using the Freepass>



* An additional limited express surcharge is required to ride the Romancecar.

Take the quick, comfortable Romancecar to Hakone! (Reservation required)



Passengers with a Freepass from Shinjuku to Hakone can board the Romancecar (reservations required) if they purchase the special express ticket (890yen).

<Romancecar limited Express surcharge & Normal fare>

limited Express Surcharge	Odawara	Hakone Yumoto	Normal fare	Odawara	Hakone Yumoto
From Shinjuku	890 yen	890 yen	From Shinjuku	880 yen	1,190 yen

Shinjuku to Hakone-Yumoto: approx. 85 min * Normal express train: approx. 115 min.

* With Hakone Freepass from Odawara and travel between Shinjuku and Hakone-Yumoto, by Romancecar, normal fare and limited express surcharge are required. Please contact staff for more information.

Places where the Freepass is available

1 Any Odakyu Line station

2 Odakyu Sightseeing Service Center, Shinjuku [Business hours 8:00-18:00]

Odakyu Sightseeing Service Center is special service counter for foreign tourists. English speaking staff are always available (on certain shifts Chinese speaking and Korean speaking staff are also available). They offer information about sightseeing along the Odakyu line in places like Hakone and Enoshima, as well as sales of tickets and Freepasses.

TEL:03-5321-7887
FAX:03-5321-7886

E-mail:welcom@odakyu-dentetsu.co.jp
WEB:www.odakyu.co.jp/english



Odakyu Sightseeing Service Center (Shinjuku)

There is also an Odakyu Sightseeing Service Center in Odawara.
Business hours 8:30-18:00
TEL:0465-24-4101

Point 2

Shrine and Temple Etiquette

Shrines are dedicated to Shinto gods, and temples to Buddhist figures such as bodhisattvas and various incarnations of Gautama. In both of these sacred places you should move and act calmly and speak quietly.



1 Bow slightly before entering a shrine's torii or a temple gate

The ground and space beyond a shrine's torii or a temple gate are considered sacred. Bow slightly before passing through torii or temple gate. As the center of the shrine walkway is the path of a sacred being, visitors should walk slightly to the right or left.



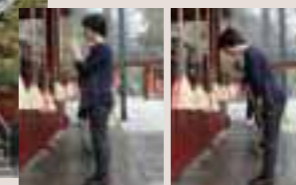
2 Rinse hands and mouth at the chozuya (ritual ablution pavilion)

After passing through shrine or temple entry, you'll find a small pavilion for rinsing hands and/or mouth before you step up to the sacred space occupied by shrine god or Buddhist deity.

Perform the ablution in five simple steps: ① with your right hand, dip the ladle into water and rinse your left hand; ② switch hands and rinse your right hand; ③ take the ladle with your right hand and pour some water into your left palm, and raise that cupped water to your mouth and rinse (taking care that your mouth does not directly contact any part of the ladle); ④ pour water onto your left hand to cleanse it; ⑤ raise the ladle cup straight up, perpendicular to the ground, to let the remaining water pour down the handle and clean it, and then return the ladle to its original spot on the fountain, face down.

3 Offering Ritual: Ring bell and toss money into offering chest

These days coins or bills are used as an offering to deities. In the past, these were made in the form of rice. There is no set amount to offer, so you should decided how much to give according to your wish or prayer, purification ritual, gratitude, or other matter. Temples usually don't have a rope pull, but if there is one, do as in a shrine; if none, make your silent pronouncement and toss gently into the slatted grate atop the offering chest.



4 Shrine Salutation: Bow twice, clap twice, and bow once to greet the deity

Bow deeply before a shrine's outer sanctuary and then make two bows, each at a 90-degree angle. Raise hands to chest center, Western-prayer style, and clap twice at a shrine but not a temple. Return hands to chest center and pray. Lower hands to sides and bow once, at a 90-degree angle. Bow again, deeply, and step back.

5 Shrine and Temple Option: amulet or paper votive

After making an offering, many visitors stop by a building where votives and amulets are sold. They also often draw paper fortunes. An amulet is worn to receive the deity's blessing; a paper votive is read to learn one's fortune. You also have the choice, according to custom, to tie the paper votive on a branch of a tree—on temple or shrine grounds—or you can take it home.



Distinguishing points of a temple

- Temples usually do not have torii but a formal structure of wood, often two stories high, as their gate. Bow slightly before passing through the overhead structure.
- When making offerings or praying at a temple, do not clap the hands. Bow deeply and then bring hands together, chest center (Western-prayer style), as you make your pronouncement.

(with thanks to Hakone Shrine)

Events of the year in Hakone



Cherry blossoms in Miyagino at Hayakawa Riverside
宮城野の早川堤の桜



Azalea at Horaien 蓬菜園のツツジ

March

- mid Mountain Burning of Sengokuhara Pampas Grass Fields (Sengokuhara)
- 27 Sengokuhara Yudate Shishimai (Hot Water Lion Dance Ritual)



Mountain Burning of Sengokuhara Pampas Grass Fields
すすき草原山焼き



Kojiri-enchi Park of Autumn leaves
湖尻園地の紅葉



Hakone Daimyo Procession
箱根大名行列



Autumn Colors of Lake Ashi
芦ノ湖の紅葉



Sengokuhara Pampas Grass Fields
仙石原のススキ草原



July

- 15 Miyagino Yudate Shishimai (Hot Water Lion Dance Ritual) (Miyagino /Suwa Shrine)
- 31 Lake Ashi Festival (Moto-hakone/ Lake Ashi)

Chisuji Falls
千条の滝



August

- 4 Kojiri Ryujin Festival (Kojiri/ Lake Ashi)
- 5 Torii Burning Festival (Moto-hakone/ Lake Ashi)
- 16 Hakone Daimonji-yaki Bonfire (Gora/Miyagino)

Hiryu Falls
飛龍の滝



Lake Ashi Festival
湖水まつり



Hydrangeas along the Hakone Tozan Railway
箱根登山電車沿線のアジサイ



Hakone Daimonji-yaki Bonfire
箱根大文字焼

January

- 2,3 Tokyo-Hakone Collegiate Ekiden Relay Race
- 5 Lake Ashi Kosuibiraki (Moto-hakone/ Lake Ashi)



February

- 3 Setsubun Festival (Hakone Shrine)

View of Lake Ashi and Mt. Fuji from Onshi-Hakone Park
恩賜箱根公園からの芦ノ湖と富士山



Must See in Hakone

Sengokuhara 仙石原



Sengokuhara Pampas Grass Fields 仙石原ススキ草原

Experience the sensual feel of pampas grass fields at the foot of Mt. Daigatake, renowned for showing Hakone autumn at its best. These golden fields, swaying as one in the fall breeze, are wonderful to see and touch.



Owakudani 大涌谷

Created roughly three millennia ago by steam explosions, "Great Boiling Valley" is an active volcanic zone sourcing Hakone hot springs and a hot tourist spot for Mt. Fuji views. Feel the volcanic power amid natural beauty.

* As of May 11, 2016, due to the active volcano, the Owakudani Park is still off limits.

Miyanoshita, Gora 宮ノ下・強羅



Hakone Gora Park 箱根強羅公園

Stroll around this French-styled park, opened in 1914, and get a clear sense of the design in bilateral symmetry around a fountain. Delights of the four seasons include a teahouse, ceramics, and flowers.



Chisuji falls 千条の滝

Note how this waterfall, three meters high and 25 meters wide, flows quietly and hangs like a reed screen over moss-covered rocks in the upper reaches of Jakotsu River. Enjoy seasonal changes like summer's glowing fireflies and autumn's fiery leaves.

Odawara 小田原



Odawara Castle 小田原城

No trip to Odawara will be complete without visiting this castle built by Omori Yoriharu, regional lord of Nishi-sagami during the Muromachi period (1337-1573). The Hojo Clan, entombed at Soun-ji, succeeded him in ruling from this historic fortress, said to have been the largest in Japan during the Warring States period.



Odawara Fishing port 小田原漁港

In addition to offering soothing sounds of harbor waters, this port serves up a rich sea harvest including horse mackerel and sardine. And being seaside, naturally the harbor has plenty of places to dine on the freshest seafood, possibly lunching on a catch hauled from the ocean by fishermen at dawn.

Moto-Hakone, Hakone-Machi 元箱根・箱根町

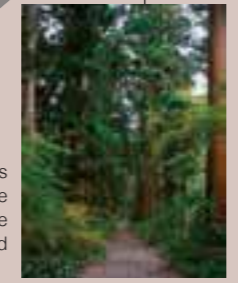
Hakone Shrine 箱根神社

Established amid the Nara period, this shrine was dedicated to all the local gods of Kanto and now is known for obtaining fortune, protection against evil, wish fulfillment, and safe road travel.



Cedar Avenue 杉並木

Along the historic Tokaido Road stands an avenue of cedars planted to give shade to travelers. Within this unique community are elders over 350 years old you must meet in their cool shadows.



Hakone Stone Buddhas 箱根石仏群



Surrounding Shojin Pond is a stately gathering of Buddha sculptures and stone monuments going back seven centuries. Among these sacred figures sits the contemplative Rokudo-jizo, carved out of rock and said to be Kanto's largest Buddha figure.

Hakone Old Tokaido Road 箱根旧街道



Amazake Chaya 甘酒茶屋

Historic teahouse open for business early in the Edo period sits perched on the Hakone stretch of the Tokaido Road, a portion legendary for being the most perilous on the old highway. Don't miss the tangy taste of sweet sake, yet another minor legend dating back to the start of the teahouse as well as naming it.



Hakone-Yumoto 箱根湯本



Soun-ji Temple 早雲寺

Construction of this historic temple was overseen by Hojo Soun, a military commander from the Warring States period (1467-1603). The grounds are done with exemplary taste, containing a traditional stone garden in the dry landscape style as well as a tomb equal to the enduring legacy of five generations of the Hojo Clan.



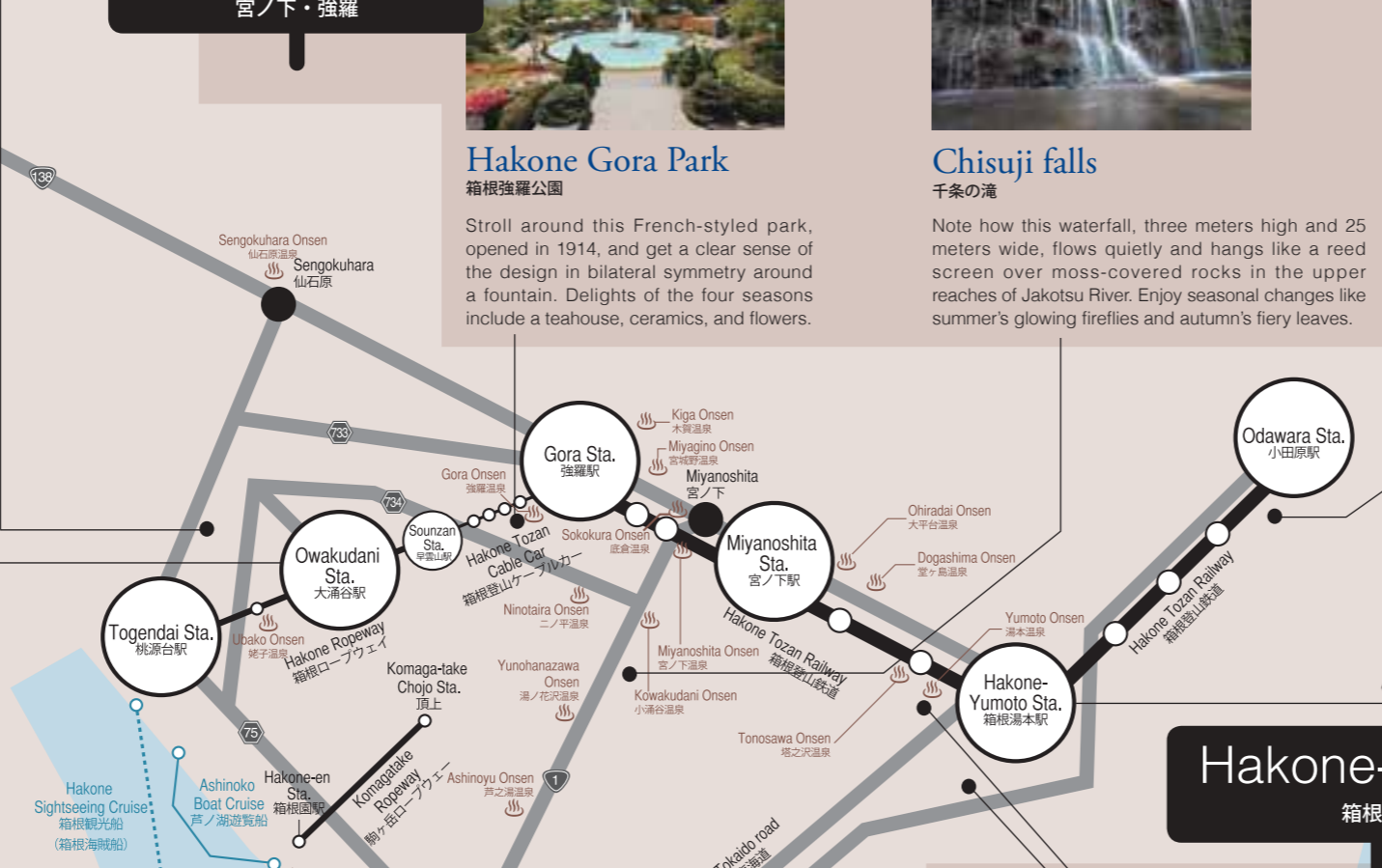
Yumoto-Kenban 湯本見番

Though it may be hard to believe geisha are not born but made, the daily training here of Yumoto geisha includes dancing, singing, reciting poetry, gracefully pouring drinks without spilling a drop, and more. In addition, seasonal events are held to demonstrate their accomplishments.



Hakone-Yumoto 箱根湯本

Arguably the most vibrant and lively hot spring district in all Hakone, Yumoto will soon convince you of its superior features, like hot springs for day trips, firmly established inns offering traditional hospitality, and streets around the station chock-a-block with restaurants and souvenirs shops.





Owakudani Black Eggs

大涌谷黒たまご

Black eggs, a local specialty, owe their unique look and taste to boiling in hot spring ponds (80°C) and then steaming at 100°C. Watch for yourself as shells turn black when immersed in hot spring minerals. Eat one, legend says, and you'll be blessed by Jizo Bosatsu (bodhisattva assuring longevity and healthy child-rearing) and your life extended by seven years.

* As of May 11, 2016, due to the active volcano, the Owakudani Park is still off limits.



Yuba & Tofu

湯葉&豆腐

Tofu comes from coagulating soy milk (pressed from beans) with bitterin into small blocks, and *yuba* from skimming off the top layer of heated soymilk. Hakone tofu and yuba, made with delicious local water, are known for "sweet" flavor and aroma.



Odawara Chochin (Odawara lantern)

小田原ちょうちん

These paper lanterns are made by attaching paper to a frame of thin bamboo sticks and are lit by a candle within. Odawara *chochin*, said to have been created during the Edo period for travelers crossing the Hakone mountains, can be neatly folded and put away. What's more, they're resistant to rain and fog. Being partially made from sacred trees, they were also used as a talisman against evil.



Yosegi-Zaiku (marquetry goods)

寄木細工

Hakone Yosegi-Zaiku come from combining various kinds of wood to create geometric shapes utilizing wood hues and grains. These are then planed down and affixed to small boxes and other items. This craft dates back to the late Edo period and a wide range of goods, including boxes and coasters, are still made today as traditional Hakone craftwork.



Onsen Manju (hot spring steamed bun)

温泉まんじゅう

This famous hot spring steamed bun is named for hot spring water used in the dough and for being steamed in hot spring vapors. They're sold not only in boxes to take home as gifts but also sold individually in stores, so be sure to try a freshly steamed bun when you visit.

What to choose from the fine assortment of Hakone gourmet foods and traditional goods? A difficult decision, but don't miss out on black eggs (unique to hot springs), tasty buckwheat noodles, elegant marquetry, and so much more!

Hakone & Odawara Gourmet Foods & Good Goods



Soba (buckwheat noodles)

そば

This traditional Japanese food goes back some 300 years and is made from ground buckwheat grain seeds. The deciding factor is water when making the noodles, which then offer a rich aroma and enjoyable texture. Good-quality water gushes in Hakone, so the taste of soba made here is specially delicious and popular.

Umeboshi (pickled plums)

梅干し

Japanese plums or *ume* are pickled in salt and dried in sunlight. The resulting *umeboshi* have been used as highly portable food by itinerant travelers passing through Hakone since the reign of the Odawara Hojo Clan and were highly valued in the Edo period by samurai accompanying *daimyo*. Unique Odawara varieties include *shisomaki umeboshi* (pickled ume wrapped in perilla leaf).



Kamaboko (fish cake)

かまぼこ

These fish cakes made from kneading then steaming minced white fish are known for their characteristic elastic texture and rich flavor. Transportation was inconvenient in the Edo period, so Odawara *kamaboko*—as preserved food made from fish caught fresh here—was served at local inns in Hakone. News of its delicious flavor soon spread nationwide.



Seafood Cuisine

海鮮料理

Hakone and Odawara, located between Sagami Bay and Suruga Bay, provide an abundant harvest of seafood, which means there's a wide variety of fresh fish, including sushi. Odawara has its own fishable harbor, so you can enjoy fresh catches of the day.

Wakasagi (pond smelt)

わかさぎ

A freshwater fish of Lake Ashi, *wakasagi* is a local specialty chosen for the Top 100 Local Specialties in Kanagawa. It's been used in local cuisine throughout the ages, and now you can try a variety of dishes like deep-fried or sweet boiled fish at restaurants near the lake.



Seafood Gourmet Theme Park Odawara Hayakawa Gyoson

小田原早川漁村

Go Portside
for Good Food
and Fun!

Oyster
Fest!



海鮮丼
Seafood rice bowl

浜焼
Hamayaki
("shore grilled," a quick bite)

地魚
Local fish

お土産
Souvenirs

しらす
Fried shirasu
(whitebait fish)

1F
Aburiya
fishermen's hamayaki
☎ 0465-24-7804 ■ Hours: 10:00-22:00
All you can eat and drink (80 min.)
general, ¥3,000;
seniors (age 65 and up),
¥2,500; elementary school,
¥1,700; pre-school, ¥1,200;
age three and younger, free

1F
Umaimono Yatai
(vendors)
■ Hours: 12:00-16:00

Cost

2F Kaisendonya Kaishu
(seafood rice bowl restaurant)
■ Hours: weekdays, 11:00-17:00; Sat., Sun., hol., 10:00-17:00

2F Gyoko no Shirasu Ichiba
(house specialty, whitebait)
■ Hours: 11:00-16:00

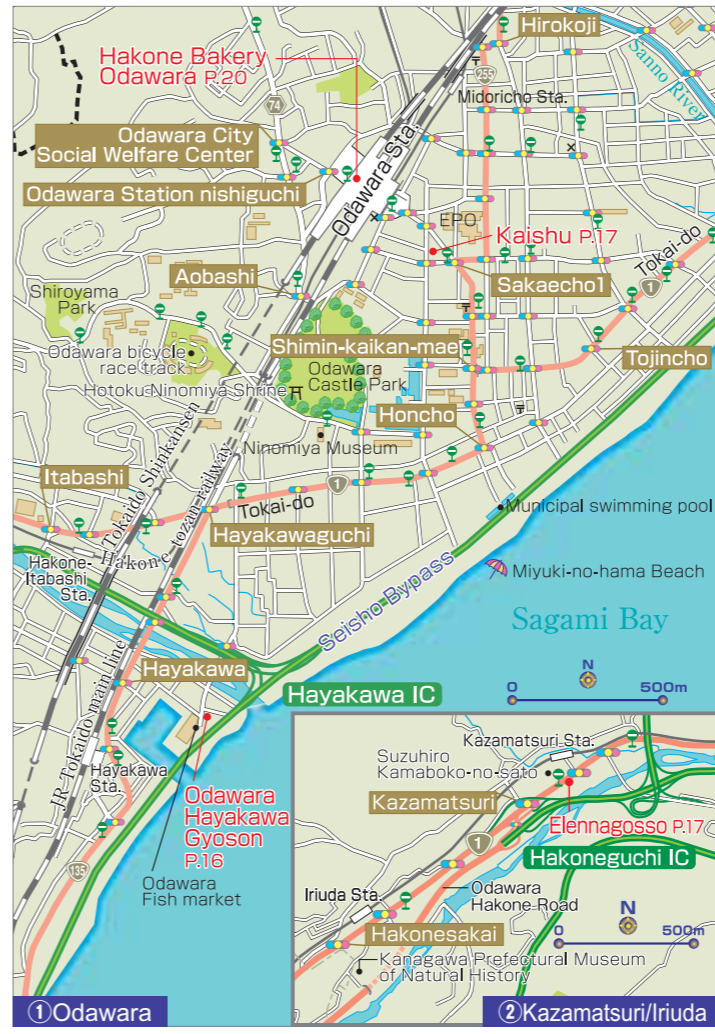


<http://gyoson.com>

〔 Odawara Hayakawa Gyoson 〕
☎ 0465-24-7800
1-9 Hayakawa, Odawara-shi
■ Hours: 10:00-22:00, daily (varies by branch)
■ Access:
5 min. by taxi from Odawara Station
5 min. on foot from Hayakawa Station
(JR Tokaido Line)
15 min. by taxi from Hakone-Yumoto Station

〔 Daini (Second) Gyoson 〕
☎ 0465-23-3360
1-11-2 Hayakawa, Odawara-shi
■ Hours (open daily):
weekdays, 10:00-17:00;
Sat., Sun., hol., 10:00-22:00

Reservations
accepted



1

2

1 A thrilling adventure in the treetops, more than 10 meters high.
2 Admission (including insurance): adults (18 or over) ¥3,600; children (ages 6-17) ¥2,600. Family discounts available.

Thrilling Adventure in the Forest
An outdoor park filled with trees whose origin is in France. Zip among the treetops in our special safety harness and enjoy 40 different activities. Our two-hour course can be challenged by first-grade elementary school students and above. Even adults will appreciate the sense of accomplishment.

Forest Adventure Odawara
フォレストアドベンチャー・小田原
☎ 080-4330-4030 **MAP P31**
■ 4391-1, Kamenokouyama, Kuno, Odawara, Kanagawa
■ 9:00-17:00 ■ Closed on Thursdays
■ 15-minute bus ride from Odawara Station (JR, Odakyu Line)
■ <http://www.foret-aventure.jp>



1 Our outstanding Lobster Rice Bowl is ¥1,780 (plus tax).
2 We offer a wide variety of 40 different types of seafood rice dishes, many of which you won't find elsewhere.

Specialty Rice Bowl Restaurant Run by a Local Fish Dealer
Our specialty restaurant offering seafood rice dishes is a hot topic on TV and in magazines. A fish dealer directly manages us, so you'll be delighted by both the quantity and the excellent taste. Enjoy discovering your favorites from 40 different varieties of seafood rice dishes. Whether you enjoy a rice bowl, sashimi or tempura, you won't forget its distinct flavor.

Kaisendonya Odawara Kaishu
海鮮丼屋 小田原 海舟
☎ 0465-24-2237 **MAP P17 1**
■ 1-14-55 Sakaecho, Odawara, Kanagawa
■ 11:00-20:00
■ Open daily
■ 3-minute walk from Odawara Station (JR/Odakyu line)

Restaurant
えねなご

Buffet : Elennagosso

In the morning, Elennagosso's chefs go to the local fish market and select the freshest seafood available. They also mainly use vegetables from local farmers grown using fertilizer made from leftover fish. Enjoy as much of our local delicacies as you like at this sustainable restaurant's all-you-can-eat buffet.

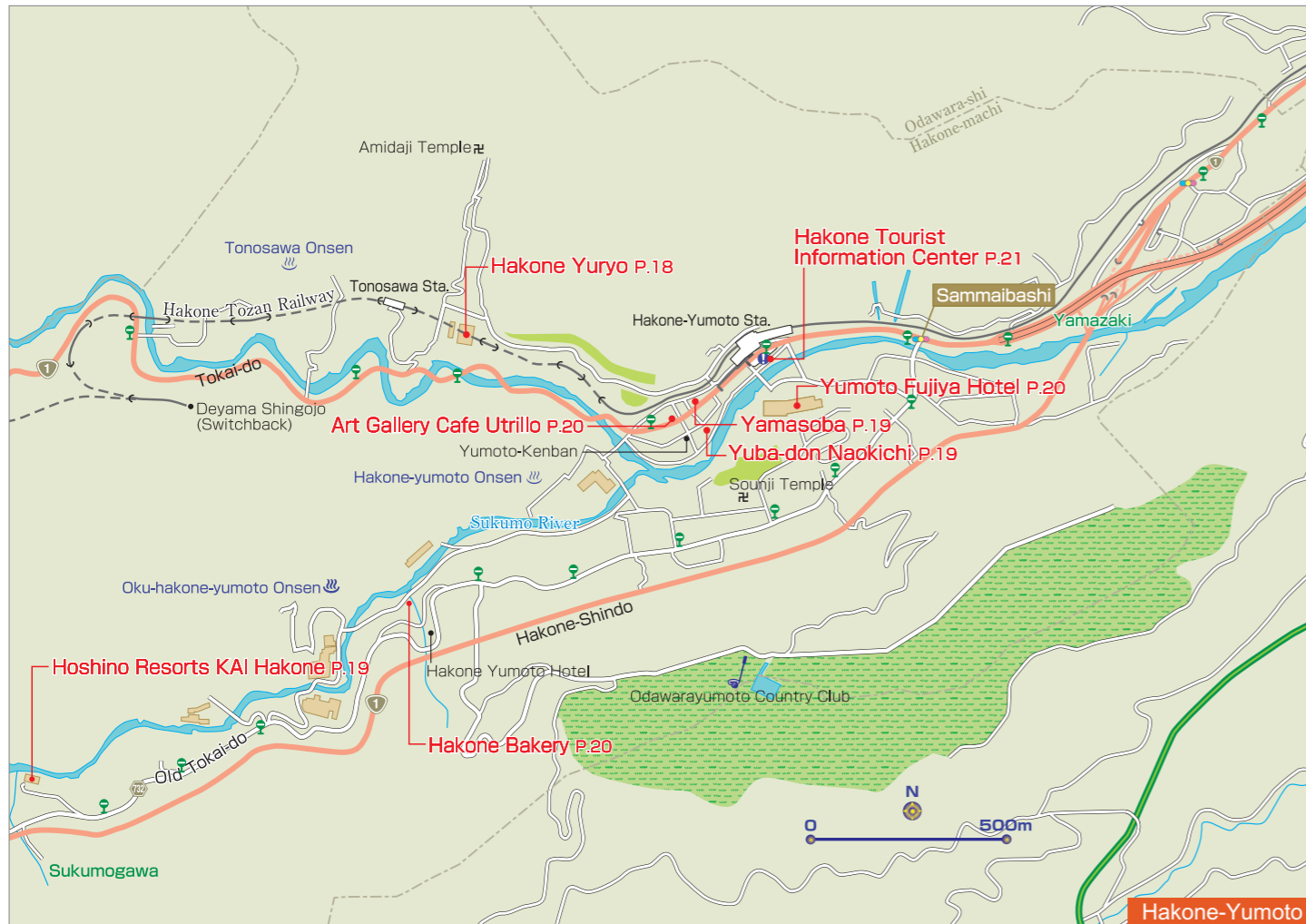


Buffet : Weekdays
● Lunch / 11:00~14:45 ¥1,850
● Tea Time / 15:00~17:00 ¥1,300 (snacks & sweets)

Weekends and holidays
● Brunch / 9:30~11:00 ¥1,500
● Lunch / 11:00~17:00 ¥1,850
● Child / age 4~12 Half price
● Child / 3 and under free



245 Kazamatsuri, Odawara city, Kanagawa, Japan
■ Short walk from Kazamatsuri Sta., 10min drive from Odawara Sta.
■ 7 days a week.
■ Payment by credit cards accepted. <http://www.kamaboko.com/english/>



- 1 Hakone Yumoto hot spring in an antique cedar bathtub.
- 2 The Japanese style rooms with a low sofa and bed which leads you to relaxation.
- 3 As a main dish, we offer Meiji Sukiyaki hot pots of miso featuring succulent premium beef.



Riverside luxury resort Hoshino Resorts KAI Hakone

Hoshino Resorts KAI Hakone is a small luxury Japanese-style hotel located on the banks of a mountain stream just off the Hakone Kyukaido. All the guest rooms are set on the river with a wide window to take in the outdoor surround sound. The hot spring bath opens directly onto the nature in front with a picturesque scenery throughout the seasons. Moreover, at the dining, a series of plates with Japanese seasonal ingredients of utter visual are served in a course style as Kaiseki dishes. Enjoy the hospitality and the nature surrounding hot spring resort.

Hoshino Resorts KAI Hakone
星野リゾート 界 箱根

☎ 0570-073-011 **MAP P.18**
 ■ 230 Yumoto Chaya, Hakone-machi, Ashigarashimo-gun, Kanagawa 250-0312
 ■ An 8-minute bus ride followed by a 5-minute walk from Hakone-Yumoto Station (Hakone Tozan Railway)
 ■ <http://www.hoshinoresorts.com/en/resortsandhotels/kai/hakone.html>

森の温泉。森のめし。

箱根温泉

HOT SPRINGS

Large communal baths: "Honden Yurakuan Oyu"

Indoor baths, open-air baths, pottery baths, and sauna facilities

Adults (including children of junior high school age or older): 1,400 yen
 Children (4-12 yrs.): 700 yen
 (Children 5 yrs. and under are not admitted.)

Opening Hours: Open 365 days a year (the resort may occasionally be closed for maintenance work)
 Weekdays: 10:00-21:00 (last admission at 20:00)
 Saturdays, Sundays and public holidays: 10:00-22:00 (last admission at 21:00)

Private open-air baths: "Hanare Yuya Kaden"

19 private rooms available

Reservations can be made by telephone (0460-85-8411) up to one month in advance.

Fee for private room use (per room, per 60-minute period):

Type 1 (7rooms)	Type 2 (8rooms)	Type 3 (4rooms)
3,900yen	4,900yen	5,900yen

Opening Hours: Open 365 days a year (the resort may occasionally be closed for maintenance work)
 Weekdays: 10:00-21:00 (last admission at 20:00)
 Saturdays, Sundays and public holidays: 10:00-22:00 (last admission at 21:00)

Hakone Yuryo — A hot spring resort that's easily accessible from Tokyo as a day trip

Hakone Yuryo can be reached easily from both Haneda Airport and Narita Airport, and is situated in one of Japan's most outstanding hot spring resort areas.

Experience a comfortable, enjoyable train journey on the Odakyu Line!

Approx 115 minutes (Limited Express "Romancecar" Odakyu Line + Hakone Tozan Line)
 Approx 90 minutes (Narita Airport)
 Approx 45 minutes (Shinjuku Sta.)
 Approx 130 minutes (Yokohama Sta. Hakone-Yumoto Airliner (Highway express bus))



- 1 Each Yuba-don (¥980) is individually boiled with egg, so this dish takes time and effort to prepare.
- 2 You can enjoy the scenery of the clear stream from our store windows.

Experience, delicious local dish called Yuba-don

Fresh Japanese yuba (tofu skin) is made by lifting the heated skin from soy milk with skewers. Our yuba, made from the finest quality soy beans, is boiled together with bonito broth, and layered with beaten eggs over rice. Our soft, delicious Yuba-don is a masterpiece of which everyone should taste at least once in life. We also have a free footbath at the front.

Yuba-don Naokichi 湯葉井 直吉

☎ 0460-85-5148 **MAP P.18**
 ■ 696 Yumoto, Hakone-machi, Ashigarashimo-gun, Kanagawa
 ■ 11:00-18:00(L.O.)
 ■ Closed on Tuesdays (Open on Tuesday holidays)
 ■ 3 minutes walk from Hakone-Yumoto Station (Hakone Tozan Railway)

Yamaimo Soba
¥1,180

Hot soba noodles topped with Japanese yam, wild vegetables, and egg yolk

Yamatake Soba
¥1,300

Tendon (regular)
¥1,320

Rice bowl loaded with deep-fried jumbo shrimp, fish, and fresh veggies

Peak Taste You've Known and Loved for Half a Century

Healthy soba noodles served cold, heaped with grated daikon and mushrooms

Hakone Jinenjo YAMASOBA

TEL : 0460-85-7889
 704 Yumoto, Hakonemachi, Ashigarashimo-gun, Kanagawa
 11:00 ~ 19:00 Closed: Thursdays
 No Parking Credit Card not accepted
<http://www.yamasoba.com>



1 Three-minute walk from Hakone-Yumoto Station. Photo op: Ajisai Bridge, in front of the hotel.
2 Discovered in the eighth century, Yumoto Hot Springs has the longest history of Hakone's 17 major hot springs.

Comfort Zone Deep in Nature

Rooms with a view of mountains or of Hakone's funicular train are inviting, as are dining options like izakaya or restaurants serving seasonal-focused Japanese, Western, and Chinese cuisine. What's more, refreshing immersion awaits you in outdoor open-air bathing set amid nature; large public indoor bathing, with room to move at ease; and private family bathing, all renowned for beautifying the skin.

Yumoto Fujiya Hotel 湯本富士屋ホテル

☎ 0460-85-6111 MAP P 18
 ■ 256-1 Yumoto, Hakone-machi, Ashigarashimo-gun, Kanagawa
 ■ Lunch: 11:30-14:00 (till 14:30 on Sat./Sun./holidays); Dinner: 18:00-20:30
 ■ Open daily ■ 3-minute walk from Hakone-Yumoto Station (Hakone Tozan Railway) ■ <http://www.yumotofujiya.jp/en/>



1 Many regular customers come to enjoy our slow-cooked hashed beef (¥1,500) and Water Drip Coffee (hot, ¥900).
2 Spacious interior where you can relax on the sofa.

Enjoy Fine Art and Coffee

Enjoy coffee amid a retro ambiance while taking in the works of well-known artists including Maurice Utrillo. We also have a menu that includes spicy curry rice and a hamburger with mushroom sauce, as well as 10 to 15 varieties of desserts.

Art Gallery Cafe Utrillo 画廊喫茶ユトリロ

☎ 0460-85-7881 MAP P 18
 ■ 692 Yumoto, Hakone-machi, Ashigarashimo-gun, Kanagawa
 ■ 9:00-20:00 ■ Holidays TBA ■ 3-minute walk from Hakone-Yumoto Station (Hakone Tozan Railway)
 ■ <http://utrillo-v.com/>



Hakone Tourist Information Center

Obtain the latest information of the whole Hakone area, such as sample trip plans and the best spots of the season here. English-speaking staff is always waiting to help plan your trip around Hakone.

Hakone Tourist Information Center
 Open hours 9:00~17:45 (open every day)
 TEL 0460-85-5700

日本交通横浜株式会社

TAKING A FULLY GUIDED SIGHTSEEING TOUR WITH AN ENGLISH SPEAKING DRIVER

Nihon Kotsu is a respected market leading taxi company operating a fleet of over 5,200 vehicles of various types. Nihon Kotsu Odawara Office offers a variety of personalized tours and premium transportation services for International tourists who visit the Fuji-Hakone-Izu National Park. Taking a guided sightseeing tour with an English speaking driver is the most informative, comfortable and safest way to appreciate everything that the region has to offer. Our services include a variety of personalized sightseeing tours, airport and hotel pick-ups, chartered luxury vehicles and regular taxi services. There is NO extra charge for hiring an English speaking driver.



Nihon Kotsu Yokohama Co., Ltd. Odawara Office

3-6-5 Hamacho, Odawara, Kanagawa 250-0004, Japan
 Please visit our site for more information, inquiries and reservations:
<http://www.fujihakone.nikko-odawara.com> email: English@nikko-odawara.com



Famed store under Hakone Yumoto Hotel management



Raclette cheese toast (Hakone Yumoto shop shown. Not available at Odawara shop.)



Savor the rich buttery flavor of this renowned and beloved croissant as well as our special breads like soy-melon buns, raisin rye bread (aka pain de seigle aux raisins), and more.



Hakone-Yumoto Main Shop



Hakone Bakery

184 Yumoto Chaya, Hakone-machi, Ashigarashimo-gun, Kanagawa
 ☎ 0460-85-8876 Free parking (10 cars)
 9:00-17:00 (last order, 16:30); closed Wed.

Hakone Bakery Odawara

Hakone Bakery Odawara Station Shop ☎ 0465-20-1126 7:00-21:00
 Odawara Station, Nishi-guchi area, in front of Tokaido Shinkansen ticket wicket

Point 3

Japanese Customs for Rooms and Meals

Please take particular care for characteristic Japanese culture and customs when eating meals or staying at *ryokan* (Japanese-style inns) which have a traditional Japanese atmosphere.



1 It is standard to remove your shoes in the entry hall before entering a room.

In the front entryway take off your shoes while facing forwards and then enter the room. You should then bend down and turn your shoes to face the other way, aligning them neatly.



2 Bowls should be held in your hand when eating.

The bowl containing your rice as well as your soup bowl and other bowls should all be held in your hand while eating from them. Don't squeeze the chopsticks too strongly, hold them vertically, cross them over, or stab your food with them.

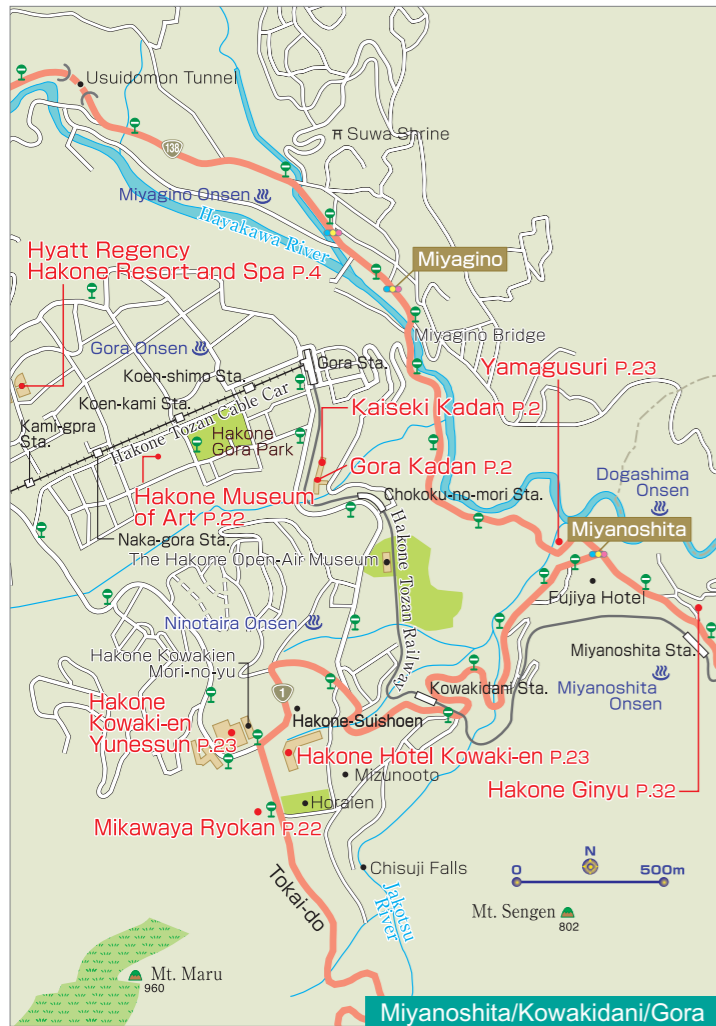


3 Try wearing your yukata around the ryokan.

A yukata is a traditional type of Japanese clothing, often worn after bathing or while sleeping. Be sure to cover your body first with the right-hand side, then left-hand side. When staying at a ryokan, you're welcome to wander around in yukata.

Simple Facts about Japanese-Style Rooms and Tatami Mats

- A Japanese-style room is one laid with tatami mats. One appealing feature is the rooms may be used for many purposes, such as a living room, bedroom, or guest room. A single tatami mat is roughly 180 cm x 90 cm, and is counted as 1 'jo' (a specific Japanese counter for tatami mats).
- Tatami mats provide Japan-style flooring. The face of tatami mats is woven grass, meaning they are highly absorbent, warm in winter, and cool in summer. Their fragrance also has a relaxing effect.



1 The museum's classic Japanese garden, a Registered Monument of Japan, has one of the country's finest and most diverse moss gardens.
2 Explore priceless objects have art of historical and aesthetic value, including the important cultural asset of Male figure of Haniwa from ancient Japan.

Experience the Beauty of Japan

Aesthetic pleasures await you in oldest art museum of Hakone. Stroll a Japanese garden after viewing classic pottery and tea-ceremony vessels. Or relax from a seated garden view in a tea house serving green tea and a seasonal sweet. Bring this issue and enjoy entry-fee discounts for adults (¥100) and for students (¥50).

Hakone Museum of Art 箱根美術館

☎ 0460-82-2623 MAP - P22
 ■ 1300 Gora, Hakone-machi, Ashigarashimo-gun, Kanagawa ■ Apr.-Nov.: 9:30-16:30 / Dec.-Mar.: 9:30-16:00 (last admission 30 mins. before closing) ■ Closed Thurs. (open if a holiday / Nov.: open daily) ■ Entry fees: adults, ¥900; high school and university students, ¥400; junior high school students and younger, free ■ A minute's walk from Koenkami Station (Hakone Tozan Cable Car) ■ <http://www.moart.or.jp/hakone/en>



1 A perfect match for the great texture of barley and rice.
2 Our "Supreme Lunch Set" (2,680 Yen + tax) is served with traditional Japanese dishes, including tofu, dried fish, and fried kamaboko fish cake.

Delicious Traditional Japanese Food

Japanese yam is a beloved traditional food from ancient times. Its sticky texture is a perfect match for Japanese rice! Experience the real thing for traditional Japanese cuisine and culture with our fine set menu: tofu, dried fish, and miso soup. Consult with us as well for halal and vegetarian menu. What's more, bring this magazine when you dine at Yamagusuri and get a gift of yosegi-zaiku (parquetry goods).

Hakone Jinenjonomori Yamagusuri 箱根 自然薯の森 山薬

☎ 0460-82-1066 MAP - P22
 ■ 224 Miyanoshita, Hakone-machi, Ashigarashimo-gun, Kanagawa
 ■ 7:00 - 21:00
 ■ Open daily
 ■ 9 minutes walk from Miyanoshita Station (Hakone Tozan Railway)



1 You can enjoy the luxurious and relaxing hot spring experience in brand new room with private open-air bath.
2 The historic garden was landscaped in 1914, as a private garden of a leisure home owned by MITSUI who is a business tycoon in Edo period.

Experience Genuine Four Seasons of JAPAN

Hakone Hotel Kowaki-en is a part of Hakone Kowaki-en which consists of three accommodations and Spa amusement park. The Hotel boasts a vast expanse of beautiful Japanese garden in front of the lobby. You can enjoy Cherry Blossoms in Spring, Twinkle Fireflies Dancing in Summer, Colored Maple Leaves in Autumn and Sparkle White Snow in Winter. A Warm welcome awaits you at Hakone Hotel Kowaki-en.

Hakone Hotel Kowaki-en 箱根ホテル小涌園

☎ 0460-82-4111 MAP - P22
 ■ 1297 Ninotaira, Hakone-machi, Ashigarashimo-gun, Kanagawa, Japan
 ■ 20 minutes by bus from Hakone-Yumoto Station (Hakone Tozan Railway)
 ■ <http://hotel.hakone-kowakien.com/>

1 The Main building has a distinct look, similar to a shrine or castle. Guest room rates per person start from ¥20,130 for a standard room, from ¥25,962 for a room with private bath included.
2 Enjoy fresh seasonal Traditional Japanese Cuisine.
3 Bathe in natural hot spring baths (Onsen).



Historical Japanese Hotel with Full Service Staff

Mikawaya Ryokan is a traditional Japanese style hotel that has been in operation from 1883 to the present day. Built using construction techniques used during the time of the Samurai, visitors to Japan would be hard pressed to find a more authentic Japanese experience. We are located in Hakone, Japan (2 hours west of Tokyo) seated on a dormant volcano, which supplies our natural hot spring baths found throughout our hotel.

Mikawaya Ryokan 三河屋旅館

☎ 0460-82-2231 MAP - P22
 ■ 503 Kowakidani, Hakone-Machi, Ashigarashimo-gun, Kanagawa ■ 20 minutes by bus from Hakone-Yumoto Station (Hakone Tozan Railway)
 ■ <http://www.hakone-mikawaya.com/language/09en.htm>

Hakone Kowaki-en YUNESSUN

Hot Spring Amusement Park and Spa Resort

Hakone Kowaki-en YUNESSUN Spa Resort has so many kind of Spas. You can have fun at this all weather facility even on rainy days. So you'll find an array of fun Spas here. And we have many kind of shops and restaurants, so you can enjoy all day.

YUNESSUN [Swim suit Area]



Mori no Yu [Naked Area]



Mio Mall



Shop "Mio Mall" is boosting the wide Selection of items. You'll find Hakone souvenirs!

Restaurants

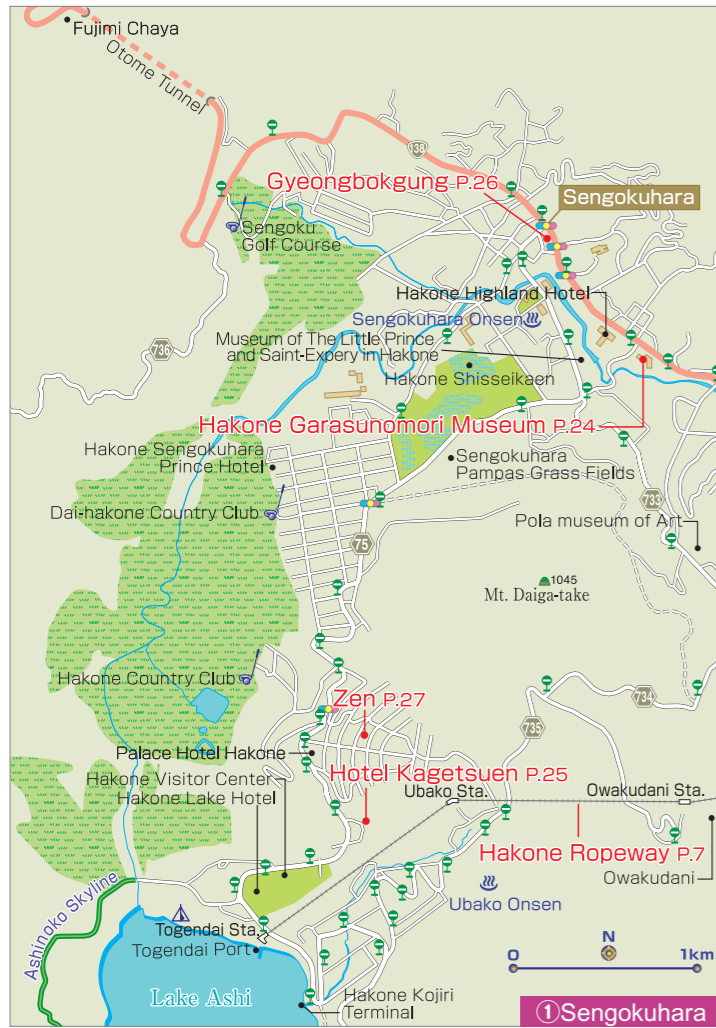


We have many kind of restaurant. Italian, Japanese, and so on. Of course only the restaurant can be use!

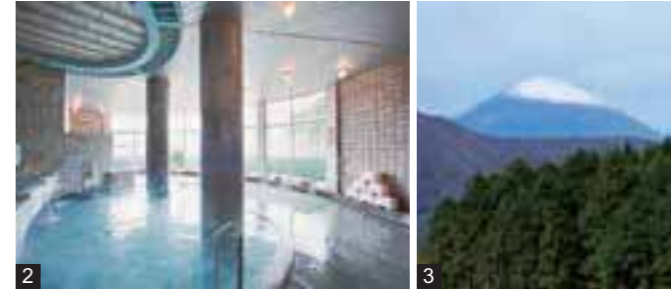
Admission Fee (tax included)
 [YUNESSUN] Adult Price ¥2,900 Child Price ¥1,600
 [Mori no Yu] Adult Price ¥1,900 Child Price ¥1,200
 [Combined] Adult Price ¥4,100 Child Price ¥2,100
 [Mio Mall] Free of charge Admission free
Business hours
 [YUNESSUN] 9:00-19:00
 [Mori no Yu] 11:00-20:00
 Parking fee ¥1,200/day Senior (60 and over) and disabled is discounts. For more information, please contact us. Child Admission Age starts from 3years old to elementary school age.

Hakone Kowaki-en YUNESSUN
 Tel.0460-82-4126
 Spa Resort
 1297, Ninotaira, Hakone-machi, Ashigarashimo-gun, Kanagawa-Japan 250-0407
<http://www.yunessun.com/>





1 Relax in the raised tatami sitting area and then sleep at ease in a bed, all in the comfort of this Japanese-and-Western guestroom. Room rates per person: overnight with two meals, from ¥11,000 (plus tax).
 2 Luxuriate in the open spaces of a huge bath with large windows or enjoy the privacy of solo bathing, free of charge.
 3 From the deluxe suite you have a superb view of the Hakone mountain range—all to yourself.



Inn with Superb View of Mt. Fuji and Four Sulfur Hot Springs

Renovations in April 2016 enhance your stay even more, including Wi-Fi enabled guestrooms with large windows, some on the garden side looking out over Mt. Fuji. Immerse yourself in a choice of four opaque sulfur springs reserved for private bathing free of charge. For dinner, try our seasonal Japanese/Western dinner tray, as beautiful as it is delicious. Savor the variety of some 40 Japanese and Western dishes in the all-you-can-eat breakfast.

Hotel Kagetsuen
ホテル花月園

0460-82-2231 MAP-P24 ①
 ■ 1244-2 Sengokuhara, Hakone-machi, Ashigarashimo-gun, Kanagawa
 ■ 40-minute bus ride from Hakone-Yumoto Station (Hakone Tozan Railway)
 ■ <http://hotel.kagetsuen.net/>



1 Himitsu-bako is a nailless "secret" box opened by moving many trick elements, on the surface, for fun and privacy.
 2 Chopsticks, coasters, cups, and other attractive items for kitchen and home use.

Japan's Traditional Woodcraft

Izumiyama is an exclusive yosegi-zaiku (parquetry) house renowned not only for great design and quality but also the broadest variety of goods in Hakone area. They carry many original products, especially the popular himitsu-bako (secret or puzzle box). Goods variety includes trays, iPhone cases, paulownia tansu, and more. We ship overseas.

Hakone Parquetry House IZUMIYA
 伝統工芸 箱根寄木細工専門店 いづみや
 0460-83-6030 MAP-P24 ②

■ 158 Hakone, Hakone-machi, Ashigarashimo-gun, Kanagawa
 ■ 10:00-17:00 ■ Closed on Thursdays ■ Parking available
 ■ 45 minutes by bus from Hakone-Yumoto Station (Hakone Tozan Railway)



1 Many exhibitions are held, so you'll always find something interesting even with repeat visits.
 2 Also attractive is our cafe-restaurant, with professional Italian singers performing *canzone*.

Enter a Magical World of Glass

When you walk down the corridor of sparkling crystal leading into our museum, reminiscent of a medieval noble's house, you enter a world of Venetian glass spanning the work of artisans from the 15th-19th centuries to today. Garden trees decorated with tens of thousands of crystal glass beads shine dazzlingly.

Hakone Garasunomori Museum
 箱根ガラスの森美術館
 0460-86-3111 MAP-P24 ①

■ 940-48 Sengokuhara, Hakone-machi, Ashigarashimo-gun, Kanagawa ■ 9:00-17:30 (last admission: 17:00) ■ Open daily ■ Admission fees: adults, ¥1,500; high school and university students, ¥1,100; primary and junior high students, ¥600. ■ 25-minute bus ride from Hakone-Yumoto Station (Hakone Tozan Railway) ■ <http://www.ciao3.com>



1 Kinubiki Tenseiro, ¥1,944.
 2 Kinubiki Tempura Shoga Udon, ¥1,404. Washoku artisanal cooks create dishes with such appeal that Japanese as well as Hollywood stars travel far and wide to be here.

Renowned and Novel Noodles

Kinubiki Udon offers finely rendered udon noodles of the highest-grade Japanese wheat and well-known Hakone water, kneaded together with grated Japanese black burdock and sesame. This trademark udon is registered and enjoyed only in this restaurant.

Kinubiki no Sato
 絹引の里
 0460-83-5151 MAP-P24 ②

■ 6-10 Moto Hakone, Hakone-machi, Ashigarashimo-gun, Kanagawa
 ■ Daily Hours (with seasonal variation): 11:00-18:00 (last order)
 ■ 40 minutes by bus from Hakone-Yumoto Station (Hakone Tozan Railway)
 ■ <http://www.kinubikinosato.jp> (in Japanese)



1 From the museum observation gallery perched atop a small hill, you can enjoy an emblematic view of Japan created by Lake Ashi and Mt. Fuji.
 2 Maiko by Sho Ishimoto

Nihonga Museum with a Magnificent View

The museum overlooks Lake Ashinoko, and on a clear day you can see Mt. Fuji. There are art exhibitions showcasing various themes centering on Nihonga selected from 4,000 pieces in our collection, ranging from works by great masters to fresh young talent. Enjoy tea served in artistic ceramics at the tea lounge. Hot sandwiches and pizza are also available.

Hakone Ashinoko Narukawa Art Museum
 箱根・芦ノ湖 成川美術館
 0460-83-6828 MAP-P24 ②

■ 570 Moto-hakone, Hakone-machi, Ashigarashimo-gun, Kanagawa
 ■ 9:00-17:00 (last admission: 16:45) ■ Open daily ■ Admission: adults, ¥1,300; high school and university students, ¥900; primary and junior high students, ¥600.
 ■ 35-minute bus ride from Hakone-Yumoto Station (Hakone Tozan Railway)
 ■ <http://www.narukawamuseum.co.jp>

Matchless View of Mt. Fuji

LaLa Gotemba offers our guests an uncompromising, matchless view of Mt. Fuji from specially located guestrooms as well as a brilliant night view of the city from outdoor baths and guestroom verandas. You also can enjoy convenient access to exciting sightseeing and shopping at Gotemba Premium Outlets and Hakone's Sengokuhara, 10 and 15 minutes away, respectively. Express bus service from Haneda and Shinjuku to Gotemba Interchange approx. 1.5-hour bus ride from Shinjuku Station.

- 1 With our exclusive lobby view of Mt. Fuji, you'll think Japan's most famous mountain was there just for you!
- 2 Impressive cantilever portico welcomes guests. Room rates per person from ¥13,500 for overnight stays with breakfast.
- 3 Hot spring's commanding view of Mt. Fuji, with fabulous sunset vistas.



LaLa GOTENBA Hotel & Resort
LaLa GOTENBA
ホテル&リゾート

MAP P30

☎ 0120-620-980

- 2571 Fukasawa, Gotemba-shi, Shizuoka Prefecture
- 40-minute bus ride from Hakone-Yumoto Station (Hakone Tozan Railway)
- <http://www.lala-gotemba.com>



- 1 2 Relax and enjoy your meal in our modern seating, with sunken-style low tables. We also offer transportation to and from the station.

Popular Yakiniku with Our Inherited Secret Sauce

Cook flavorful Wagyu beef in a smokeless roaster and dip it in our inherited secret sauce. We offer an extensive a la carte menu of healthy Korean cuisine, and our special cold noodles are so popular they've been featured on TV.

Korean Cuisine Yakiniku Gyeongbokgung
韓国料理・焼肉 景福宮

☎ 0460-84-5529

MAP P24 ①

- 74-1 Sengokuhara, Hakone-machi, Ashigarashimo-gun, Kanagawa
- Lunch:12:00-14:00 / Dinner:17:30-22:00 ■ Holidays TBA
- 25-minute bus ride from Hakone-Yumoto Station (Hakone Tozan Railway)



- 1 Gaze at the grace of Mt. Fuji and Lake Ashi from the large windows of the guest rooms. The beautiful scenery is like something out of an artist's painting.
- 2 The building's exterior. 1 night with 2 meals from 20,400yen per person.

A view of Mt. Fuji from every room

'Ryuguden' is a Japanese style hot spring hotel situated on the shores of Lake Ashi. All of its rooms command a magnificent view of Mt. Fuji and Lake Ashi. It has the traditional beauty of Japanese architecture along with hot springs and splendid Japanese-style meals. Our hotel offers a unique luxury that allows you to enjoy Mt. Fuji and the world of Japan to your heart's content.

Ryuguden 龍宮殿

☎ 0460-83-1121

MAP P24 ②

- 139 Moto-hakone, Hakone-machi, Ashigarashimo-gun, Kanagawa
- 65 minutes by bus from Hakone-Yumoto Station (Hakone Tozan Railway)
- <http://www.princehotels.co.jp/ryuguden/>



- 1 A refined yet relaxed interior. What's more, guestrooms let you enjoy the magnificence of nature, while rooms on the top floor command a spectacular view of Mt. Fuji.
- 2 Japanese-style creations are served for dinner. The photograph shows an example.

Enjoy a Private Open-Air Bath

This is a quiet forest inn in Sengokuhara. All nine rooms have cypress-lined open-air baths, allowing you to privately enjoy the active hot spring waters that flow continuously. Please enjoy our Japanese-style creations for dinner, made with fresh coastal fish and fresh local vegetables, as well as Fujiyama Wagyu beef.

Hakone Yuyado Zen 箱根湯宿 然

☎ 0460-84-2400

MAP P24 ①

- 1245-96 Sengokuhara, Hakone-machi, Ashigarashimo-gun, Kanagawa
- 40-minute bus ride from Hakone-Yumoto Station (Hakone Tozan Railway)
- Phone reservation time: 10:00-20:00

FUJIYA HOTEL GMAH

A resort hotel by Lake Ashi,
with views of the peak of Mt. Fuji.



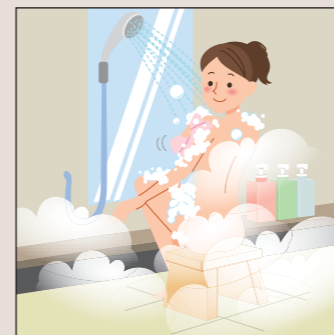
芦ノ湖
HAKONE HOTEL
FUJIYA HOTEL LAKE VIEW ANNEK

■ 65 Hakone, Hakone-machi, Ashigarashimo-gun, Kanagawa, 250-0521, JAPAN
■ Tel: +81-460-83-6311 ■ <http://www.hakonehotel.jp/en/>

Point 4

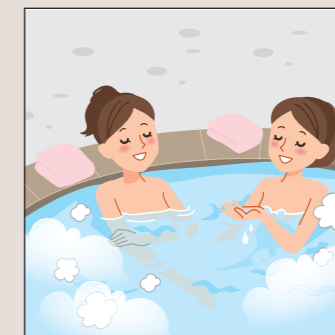
Pointers on Bathing Etiquette

These are places to relax and heal your mind and body, so enjoy your time calmly and refrain from any public pool-type antics.



1 Wash before entering the bath!

Wash face and body, then rinse off all soap before entering the tub. Enter naked, without wearing a towel, and enjoy soaking—only soaking.



2 No towels in the tub

Enter the bath slowly, to avoid splashing. As a matter of public hygiene, don't put or let your towel into the water and, in general, follow common-sense manners as well as these etiquette pointers.



3 Dry off after bath and before entering dressing room

Dry off with a towel in the bathing area, before entering the dressing room, to prevent the dressing room floor getting wet.

Onsen FAQs

- Onsen water can be quite dense and the heat intense, so avoid getting dizzy by limiting your time: don't soak too long (no more than 15 minutes). Immerse yourself up to neck or waist, no deeper, and be sure to hydrate before and after a bath.
- Bath water may have some "floaties" that are natural mineral components, not trash or filthy bits, so don't worry if something tiny comes your way.

Breathtaking Views of Mt. Fuji

Mt. Fuji, symbolic home to Japanese people, became a World Cultural Heritage site by virtue of its beauty and being a source of spiritual as well as artistic inspiration. Experience all the joys of uniquely viewing Japan's sacred peak from Sengokuhara and Moto-Hakone areas.



from Mt. Kintoki



from Owakudani
* As of May 11, 2016, due to the active volcano, the Owakudani Park is still off limits.



from Lake Ashi



from Mt. Taikan

Hakone

Onsen Short List

There are many kinds of Hakone hot springs (*onsen*) in which you can immerse yourself in luxuriant relaxation: those offering magnificent views or opaque springs where the color changes through shifting minerals; onsen with reserved bathing to relax in private or with unique colors, scents, and more. Indulge yourself in a bevy of choices suited to your travel needs and personal preference.

Sublime bath immersed in Nature



Hakone Ginyu (see page 32)

Outdoor bath with stunning view of Mt. Fuji



Hotel Green Plaza Hakone

Opaque water brimming with the essence of onsen bathing



Hakone Yuyado Zen (see page 27)

Bath overflowing with a playful spirit



Hakone Kowaki-en YUNESSUN (see page 23)

Reserved bathing for ultimate relaxation in private



Hakone Yuryo (see page 18)

MISMO HAKONE ENGLISH vol.4

Staff

Publisher
Kazuhiro Nakamura

Editor in Chief
Yoshiko Maki

Deputy Editor in Chief
Koichiro Uramoto

Sales&Promotion Staff
Jun Saito

Editor
Kayoko Aihara
Hiroko Matsubayashi

Designer
Yukako Miyazawa
NIPPON PRICOM,inc.

Photographer
Junichi Ihara
Megumi Sakurai

Map Design
Shigeko Kobayashi

DTP Staff
Junna Shirasawa
Satomi Kamiya

Special Thanks
McDAVIS ASSOCIATES,INC.
NIPPON PRICOM,inc.

Cooperation 協力
Odakyu Electric Railway Co., Ltd.
小田急電鉄株式会社

Odakyu Hakone Group
小田急箱根グループ

HAKONE TOWN
箱根町

HAKONE Convention Bureau
箱根コンベンションビューロー

Hakone Town Tourist Association
一般財団法人箱根町観光協会

Odawara City
小田原市

Issue 発行
iINCLUDE Co., Ltd.
株式会社インクルーブ

<http://www.mismonet.com>

本誌の広告に関するお問い合わせは
株式会社インクルーブ
〒215-0021
神奈川県川崎市麻生区上麻生1-5-1
りそな新百合ヶ丘ビル5F
営業企画部 ☎044-959-3750

Printing and bookbinding 印刷・製本
SANKEI SOGO PRINTING Corporation
サンケイ総合印刷株式会社

次号は2016年11月発行予定です。



Minamiashigara-shi

Kanagawa Pref.

Odawara-shi

Shizuoka Pref.

Yugawara-machi

Manazuru-machi

Mishima-shi

Atami-shi

Susono-shi

Nagaizumi-cho

Numazu-shi

Shimizu-cho

Kannami-cho

Hakone/Odawara MAP

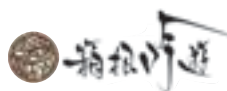


HAKONE GINYU

連山を見渡し
山紫水明の
境に遊ぶ



*The guest feel 5 senses in scenery and find so many impression,
This is our Ryokan concept.*



TEL. 0460-82-3355